



ELECTRONIC COPY

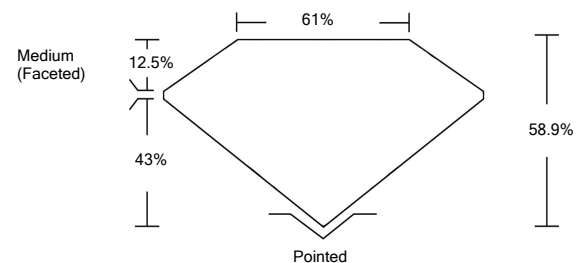
LG519239291

LABORATORY GROWN DIAMOND REPORT

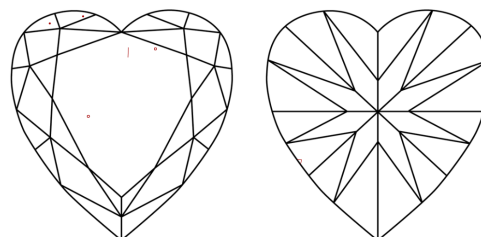
March 15, 2022	
IGI Report Number	LG519239291
Description	LABORATORY GROWN DIAMOND
Shape and Cutting Style	HEART BRILLIANT
Measurements	8.62 X 9.79 X 5.77 MM
GRADING RESULTS	
Carat Weight	2.80 CARATS
Color Grade	G
Clarity Grade	VS 2
ADDITIONAL GRADING INFORMATION	
Polish	EXCELLENT
Symmetry	EXCELLENT
Fluorescence	NONE
Inscription(s)	LABGROWN IGI LG519239291

Comments: This Laboratory Grown Diamond was created by Chemical Vapor Deposition (CVD) growth process and may include post-growth treatment.
Type IIa

PROPORTIONS



CLARITY CHARACTERISTICS

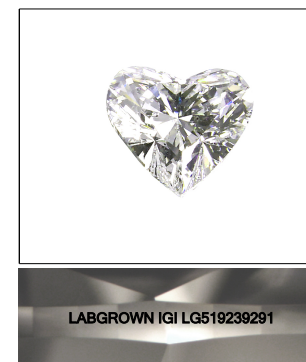


KEY TO SYMBOLS

Red symbols indicate internal characteristics.
Green symbols indicate external characteristics.

GRADING SCALES

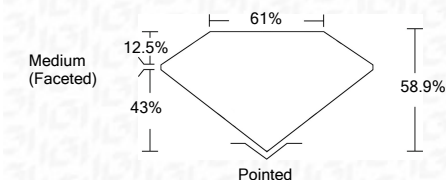
COLOR GRADING SCALE	CL	NC	FT	VLT	LT	
	COLORLESS D-F	NEAR COLORLESS G-J	FAINT K-M	VERY LIGHT N-R	LIGHT S-Z	
CLARITY (10x) GRADING SCALE	FL	IF	VVS	VS	SI	I
	FLAWLESS INTERNALLY FLAWLESS	VERY VERY SLIGHTLY INCLUDED	VERY SLIGHTLY INCLUDED	SLIGHTLY INCLUDED	INCLUDED	



LASERSCRIBESM

Sample Image Used

March 15, 2022	
IGI Report Number	LG519239291
Description	LABORATORY GROWN DIAMOND
Shape and Cutting Style	HEART BRILLIANT
Measurements	8.62 X 9.79 X 5.77 MM
GRADING RESULTS	
Carat Weight	2.80 CARATS
Color Grade	G
Clarity Grade	VS 2



ADDITIONAL GRADING INFORMATION

Polish	EXCELLENT
Symmetry	EXCELLENT
Fluorescence	NONE
Inscription(s)	LABGROWN IGI LG519239291

Comments: This Laboratory Grown Diamond was created by Chemical Vapor Deposition (CVD) growth process and may include post-growth treatment.
Type IIa



IGI

IGI Report No. LG519239291	HEART BRILLIANT	2.80 CARATS	G	VS 2	Pointed
8.62 X 9.79 X 5.77 MM	Carat Weight	58.9%	61%	Medium (Faceted)	EXCELLENT
Color Grade	Clarity Grade	Depth	Table	Girdle	EXCELLENT
Polish	Symmetry	Fluorescence	Inscription(s)	Comments:	NONE
LABGROWN IGI LG519239291					LABGROWN IGI LG519239291

This Laboratory Grown Diamond was created by Chemical Vapor Deposition (CVD) growth process and may include post-growth treatment.
Type IIa