



ELECTRONIC COPY

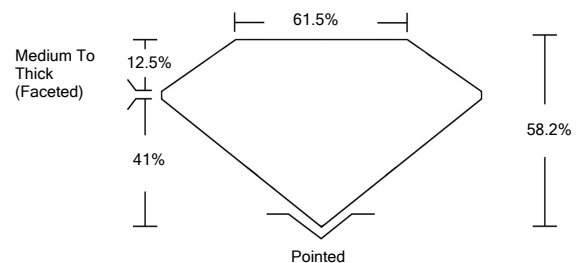
LABORATORY GROWN DIAMOND REPORT

March 15, 2022	
IGI Report Number	LG517221645
Description	LABORATORY GROWN DIAMOND
Shape and Cutting Style	SQUARE CUSHION MODIFIED BRILLIANT
Measurements	6.87 X 6.58 X 3.83 MM
GRADING RESULTS	
Carat Weight	1.52 CARAT
Color Grade	FANCY INTENSE BLUE
Clarity Grade	VS 2
ADDITIONAL GRADING INFORMATION	
Polish	EXCELLENT
Symmetry	EXCELLENT
Fluorescence	NONE
Inscription(s)	LABGROWN IGI LG517221645

Comments: As Grown - No indication of post-growth treatment.
This Laboratory Grown Diamond was created by High Pressure High Temperature (HPHT) growth process.

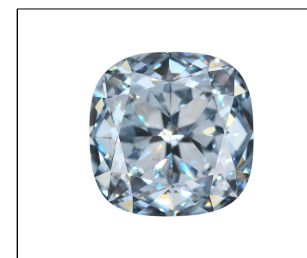
LG517221645

PROPORTIONS



GRADING SCALES

COLOR GRADING SCALE	CL	NC	FT	VL	LT	
	COLORLESS D-F	NEAR COLORLESS G-J	FAINT K-M	VERY LIGHT N-R	LIGHT S-Z	
CLARITY (10x) GRADING SCALE	FL	IF	VVS	VS	SI	I
	FLAWLESS INTERNALLY FLAWLESS	VERY VERY SLIGHTLY INCLUDED	VERY SLIGHTLY INCLUDED	SLIGHTLY INCLUDED	INCLUDED	

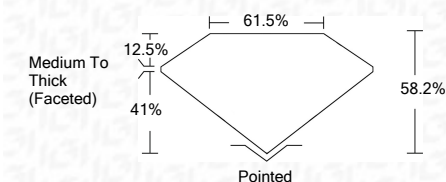


LASERSCRIBESM

Sample Image Used



March 15, 2022	
IGI Report Number	LG517221645
Description	LABORATORY GROWN DIAMOND
Shape and Cutting Style	SQUARE CUSHION MODIFIED BRILLIANT
Measurements	6.87 X 6.58 X 3.83 MM
GRADING RESULTS	
Carat Weight	1.52 CARAT
Color Grade	FANCY INTENSE BLUE
Clarity Grade	VS 2



ADDITIONAL GRADING INFORMATION	
Polish	EXCELLENT
Symmetry	EXCELLENT
Fluorescence	NONE
Inscription(s)	LABGROWN IGI LG517221645

Comments: As Grown - No indication of post-growth treatment.
This Laboratory Grown Diamond was created by High Pressure High Temperature (HPHT) growth process.



IGI

March 15, 2022	IGI Report No. LG517221645
SQUARE CUSHION MODIFIED BRILLIANT	6.87 X 6.58 X 3.83 MM
Carat Weight	1.52 CARAT
Color Grade	FANCY INTENSE BLUE
Clarity Grade	VS 2
Depth	58.2%
Table	61.5%
Grade	Medium To Thick (Faceted)
Culet	Pointed
Polish	EXCELLENT
Symmetry	EXCELLENT
Fluorescence	NONE
Inscription(s)	LABGROWN IGI LG517221645
Comments:	As Grown - No indication of post-growth treatment. Laboratory Grown Diamond was created by High Pressure High Temperature (HPHT) growth process.