



INTERNATIONAL GEMOLOGICAL INSTITUTE

ELECTRONIC COPY

LABORATORY GROWN DIAMOND REPORT

LG517210114

IGI LABORATORY GROWN DIAMOND ID REPORT

03/15/2022

IGI Report Number **LG517210114**

PEAR BRILLIANT

8.88 X 5.47 X 3.33 MM

| | |
|----------------|-----------------------------|
| Carat Weight | 0.94 CARAT |
| Color Grade | E |
| Clarity Grade | VS 1 |
| Polish | EXCELLENT |
| Symmetry | VERY GOOD |
| Fluorescence | NONE |
| Inscription(s) | LABGROWN IGI LG517210114 |

Comments: As Grown - No indication of post-growth treatment.
This Laboratory Grown Diamond was created by High Pressure High Temperature (HPHT) growth process.
Type II

LABORATORY GROWN DIAMOND REPORT

IGI LABORATORY GROWN DIAMOND IDENTIFICATION REPORT

03/15/2022

IGI Report Number **LG517210114**

Shape and Cutting Style **PEAR BRILLIANT**

Measurements **8.88 X 5.47 X 3.33 MM**

GRADING RESULTS

Carat Weight **0.94 CARAT**

Color Grade **E**

Clarity Grade **VS 1**

ADDITIONAL GRADING INFORMATION

Polish **EXCELLENT**

Symmetry **VERY GOOD**

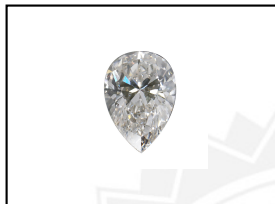
Fluorescence **NONE**

Inscription(s) **LABGROWN IGI LG517210114**

Comments: As Grown - No indication of post-growth treatment.

This Laboratory Grown Diamond was created by High Pressure High Temperature (HPHT) growth process.

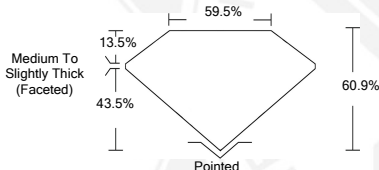
Type II



LABGROWN IGI LG517210114

LASERSCRIBESM

Sample Image Used



IGI LABORATORY GROWN DIAMOND ID REPORT

03/15/2022

IGI Report Number **LG517210114**

PEAR BRILLIANT

8.88 X 5.47 X 3.33 MM

| | |
|----------------|-----------------------------|
| Carat Weight | 0.94 CARAT |
| Color Grade | E |
| Clarity Grade | VS 1 |
| Polish | EXCELLENT |
| Symmetry | VERY GOOD |
| Fluorescence | NONE |
| Inscription(s) | LABGROWN IGI LG517210114 |

Comments: As Grown - No indication of post-growth treatment.
This Laboratory Grown Diamond was created by High Pressure High Temperature (HPHT) growth process.
Type II



This Laboratory Grown Diamond (LGD) described in this Report has been analyzed, graded and Laserscribed[®] by International Gemological Institute (IGI). A LGD has essentially the chemical, physical and optical properties as a mined diamond, with the exception of being man-made (a manufactured product). LGD's are typically produced by CVD (chemical vapor deposition) or by HPHT (high pressure high temperature) growth processes and may include post growth modifications to change the color. IGI utilizes the most advanced techniques and equipment currently available including, binocular microscopes, diamond color masters, non-contact-optical measuring device, a wide range analytical techniques including FTIR, UV-VIS-NIR, raman spectroscopy, and fluorescence analysis at various excitation wavelengths. This Report includes advanced security features. This Report is neither a guarantee, valuation nor appraisal and by making the report IGI does not agree to purchase or replace the article.

INTERNATIONAL GEMOLOGICAL INSTITUTE, INC



For Terms & Conditions and to verify this report, please visit www.igi.org