



**INTERNATIONAL
GEMOLOGICAL
INSTITUTE**

ELECTRONIC COPY

**LABORATORY GROWN
DIAMOND REPORT**

**IGI LABORATORY GROWN
DIAMOND ID REPORT**

March 1, 2022
IGI Report Number **LG516253834**
PEAR BRILLIANT
7.21 X 4.54 X 2.84 MM
Carat Weight 0.54 CARAT
Color Grade **FANCY VIVID PINK**
Clarity Grade **VVS 2**
Polish **EXCELLENT**
Symmetry **VERY GOOD**
Fluorescence **STRONG**
Inscription(s) **LABGROWN IGI
LG516253834**

Comments: This Laboratory Grown Diamond was created by Chemical Vapor Deposition (CVD) growth process.
Indications of post-growth treatment.

LABORATORY GROWN DIAMOND REPORT

IGI LABORATORY GROWN DIAMOND IDENTIFICATION REPORT

March 1, 2022
IGI Report Number **LG516253834**
Description **LABORATORY GROWN DIAMOND**
Shape and Cutting Style **PEAR BRILLIANT**
Measurements **7.21 X 4.54 X 2.84 MM**

GRADING RESULTS

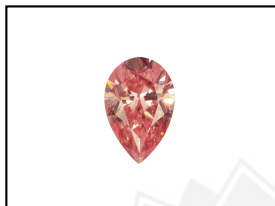
Carat Weight **0.54 CARAT**
Color Grade **FANCY VIVID PINK**
Clarity Grade **VVS 2**

ADDITIONAL GRADING INFORMATION

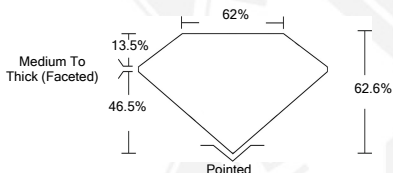
Polish **EXCELLENT**
Symmetry **VERY GOOD**
Fluorescence **STRONG**
Inscription(s) **LABGROWN IGI LG516253834**

Comments: This Laboratory Grown Diamond was created by Chemical Vapor Deposition (CVD) growth process.
Indications of post-growth treatment.

LG516253834



LASERSCRIBESM
Sample Images Used



THIS DOCUMENT WAS PRODUCED WITH THE FOLLOWING SECURITY MEASURES: SPECIAL DOCUMENT PAPER, INK SCREENS, WATERMARK, BACKGROUND DESIGN, HOLOGRAM AND OTHER SECURITY FEATURES NOT LISTED AND DO EXCEEDED DOCUMENT SECURITY INDUSTRY GUIDELINES.

For Terms & Conditions and to verify this report, please visit www.igi.org

**IGI LABORATORY GROWN
DIAMOND ID REPORT**

March 1, 2022
IGI Report Number **LG516253834**
PEAR BRILLIANT
7.21 X 4.54 X 2.84 MM
Carat Weight 0.54 CARAT
Color Grade **FANCY VIVID PINK**
Clarity Grade **VVS 2**
Polish **EXCELLENT**
Symmetry **VERY GOOD**
Fluorescence **STRONG**
Inscription(s) **LABGROWN IGI
LG516253834**

Comments: This Laboratory Grown Diamond was created by Chemical Vapor Deposition (CVD) growth process.
Indications of post-growth treatment.