



**INTERNATIONAL
GEMOLOGICAL
INSTITUTE**

ELECTRONIC COPY

**LABORATORY GROWN
DIAMOND REPORT**

**IGI LABORATORY GROWN
DIAMOND ID REPORT**

February 28, 2022
IGI Report Number **LG516253466**

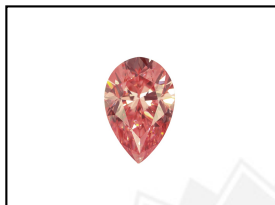
LABORATORY GROWN DIAMOND REPORT

LG516253466

PEAR BRILLIANT
7.21 X 4.41 X 2.80 MM
Carat Weight 0.53 CARAT
Color Grade FANCY VIVID PINK
Clarity Grade VS 1
Polish EXCELLENT
Symmetry VERY GOOD
Fluorescence STRONG
Inscription(s) LABGROWN IGI
LG516253466

IGI LABORATORY GROWN DIAMOND IDENTIFICATION REPORT

February 28, 2022
IGI Report Number LG516253466
Description LABORATORY GROWN DIAMOND
Shape and Cutting Style PEAR BRILLIANT
Measurements 7.21 X 4.41 X 2.80 MM



Comments: This Laboratory Grown Diamond was created by Chemical Vapor Deposition (CVD) growth process.
Indications of post-growth treatment.

GRADING RESULTS

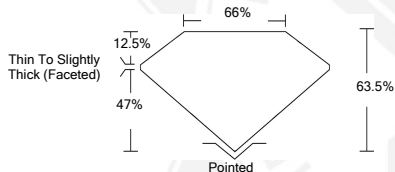
Carat Weight 0.53 CARAT
Color Grade FANCY VIVID PINK
Clarity Grade VS 1

ADDITIONAL GRADING INFORMATION

Polish EXCELLENT
Symmetry VERY GOOD
Fluorescence STRONG
Inscription(s) LABGROWN IGI LG516253466

Comments: This Laboratory Grown Diamond was created by Chemical Vapor Deposition (CVD) growth process.
Indications of post-growth treatment.

LASERSCRIBESM
Sample Images Used



**IGI LABORATORY GROWN
DIAMOND ID REPORT**

February 28, 2022
IGI Report Number **LG516253466**

PEAR BRILLIANT
7.21 X 4.41 X 2.80 MM
Carat Weight 0.53 CARAT
Color Grade FANCY VIVID PINK
Clarity Grade VS 1
Polish EXCELLENT
Symmetry VERY GOOD
Fluorescence STRONG
Inscription(s) LABGROWN IGI
LG516253466

Comments: This Laboratory Grown Diamond was created by Chemical Vapor Deposition (CVD) growth process.
Indications of post-growth treatment.

THIS DOCUMENT WAS PRODUCED WITH THE FOLLOWING SECURITY MEASURES: SPECIAL DOCUMENT PAPER, INK SCREENS, WATERMARK, BACKGROUND DESIGN, HOLOGRAM AND OTHER SECURITY FEATURES NOT LISTED AND DO EXCEEDED DOCUMENT SECURITY INDUSTRY GUIDELINES.

For Terms & Conditions and to verify this report, please visit www.igi.org