



ELECTRONIC COPY

LABORATORY GROWN DIAMOND REPORT

April 29, 2022	
IGI Report Number	LG515236575
Description	LABORATORY GROWN DIAMOND
Shape and Cutting Style	PRINCESS CUT
Measurements	7.55 X 7.52 X 5.42 MM

GRADING RESULTS

Carat Weight	2.61 CARATS
Color Grade	G
Clarity Grade	VVS 2

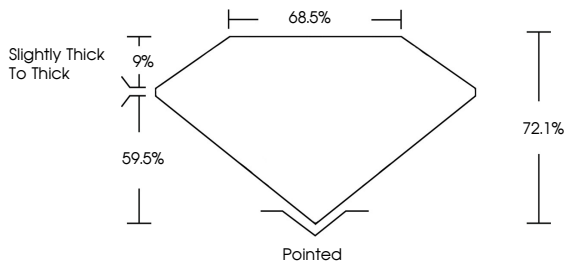
ADDITIONAL GRADING INFORMATION

Polish	EXCELLENT
Symmetry	VERY GOOD
Fluorescence	NONE

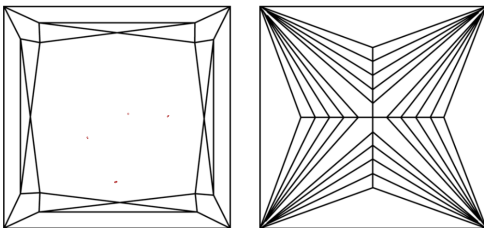
Inscription(s) **LABGROWN IGI LG515236575**
 Comments: This Laboratory Grown Diamond was created by Chemical Vapor Deposition (CVD) growth process and may include post-growth treatment.
 Type IIa

LG515236575

PROPORTIONS



CLARITY CHARACTERISTICS

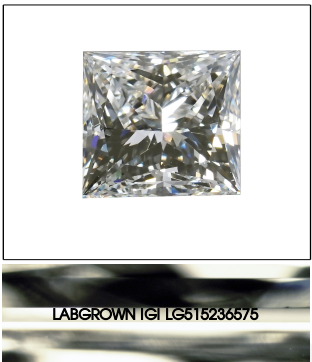


KEY TO SYMBOLS

Red symbols indicate internal characteristics.
Green symbols indicate external characteristics.

GRADING SCALES

COLOR GRADING SCALE	CL		NC	FT	VLT	LT
	COLORLESS D-F		NEAR COLORLESS G-J	FAINT K-M	VERY LIGHT N-R	LIGHT S-Z
CLARITY (10x) GRADING SCALE	FL	IF	VVS	VS	SI	I
	FLAWLESS INTERNALLY FLAWLESS		VERY VERY SLIGHTLY INCLUDED	VERY SLIGHTLY INCLUDED	SLIGHTLY INCLUDED	INCLUDED

LASERSCRIBESM

Sample Image Used

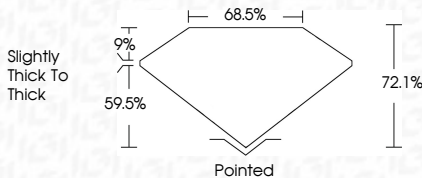


© IGI 2020, International Gemological Institute

FD - 10 20

LABORATORY GROWN DIAMOND REPORT

April 29, 2022	
IGI Report Number	LG515236575
Description	LABORATORY GROWN DIAMOND
Shape and Cutting Style	PRINCESS CUT
Measurements	7.55 X 7.52 X 5.42 MM
GRADING RESULTS	
Carat Weight	2.61 CARATS
Color Grade	G
Clarity Grade	VVS 2



ADDITIONAL GRADING INFORMATION

Polish	EXCELLENT
Symmetry	VERY GOOD
Fluorescence	NONE
Inscription(s)	LABGROWN IGI LG515236575

Comments: This Laboratory Grown Diamond was created by Chemical Vapor Deposition (CVD) growth process and may include post-growth treatment.
Type IIa



IGI

April 29, 2022	IGI Report No. LGS16236576
PRINCESS CUT	
7.55 X 7.62 X 6.42 MM	
Carat Weight	2.61 CARATS
Color Grade	G
Clarity Grade	VVS 2
Depth	72.1%
Table	68.5%
Grade	Slightly Thick to Thick
Culet	Pointed
Polish	Excellent
Symmetry	Very Good
Fluorescence	None
Inscriptions	LARGON (G) LGS16236576
Comments:	
This Laboratory Grown Diamond was produced using a High Pressure High Temperature (HPHT) growth process and may include post-growth treatment. Type Ila	

This Laboratory Grown Diamond was created by Chemical Vapor Deposition (CVD) growth process and may include post-growth treatment.
Type IIa