



ELECTRONIC COPY

LABORATORY GROWN DIAMOND REPORT

February 2, 2022

IGI Report Number **LG515200593**

Description	LABORATORY GROWN DIAMOND
-------------	-----------------------------

Shape and Cutting Style **HEART BRILLIANT**

Measurements **7.26 X 8.05 X 4.60 MM**

GRADING RESULTS

Carat Weight 1.53 CARAT

Color Grade	G
-------------	---

Clarity Grade VS 1

ADDITIONAL GRADING INFORMATION

Polish **EXCELLENT**Symmetry **EXCELLENT**Fluorescence **NONE**

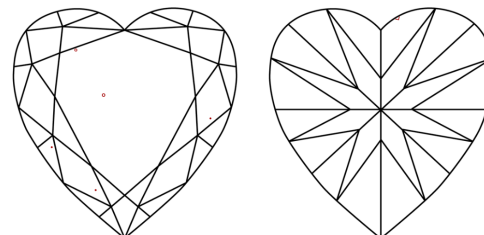
Inscription(s) **LABGROWN IGI LG515200593**

Comments: This Laboratory Grown Diamond was created by Chemical Vapor Deposition (CVD) growth process and may include post-growth treatment.
Type IIa

Diagram illustrating the proportions of a diamond-shaped object (likely a gemstone) with the following dimensions:

- Top width: 54.5%
- Left side thickness: 15.5% (Slightly Thick To Thick (Faceted))
- Left side depth: 37%
- Right side depth: 57.1%
- Bottom: Pointed

CLARITY CHARACTERISTICS

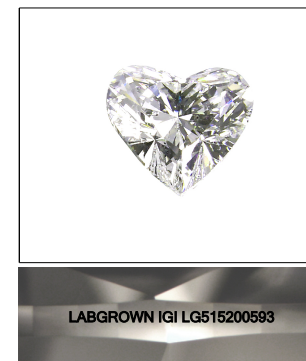


KEY TO SYMBOLS

Red symbols indicate internal characteristics.
Green symbols indicate external characteristics.

GRADING SCALES

COLOR GRADING SCALE	CL		NC		FT		VLT		LT	
	COLORLESS D-F		NEAR COLORLESS G-J		FAINT K-M		VERY LIGHT N-R		LIGHT S-Z	
CLARITY (10x) GRADING SCALE	FL	IF	VVS		VS		SI		I	
	FLAWLESS INTERNALLY FLAWLESS		VERY VERY SLIGHTLY INCLUDED		VERY SLIGHTLY INCLUDED		SLIGHTLY INCLUDED		INCLUDED	

LASERSCRIBESM

Sample Image Used



© IGI 2020, International Gemological Institute

FD - 10 20

LABORATORY GROWN DIAMOND REPORT

February 2, 2022
IGI Report Number **LG515200593**

Description	LABORATORY GROWN DIAMOND
-------------	-----------------------------

Shape and Cutting Style **HEART BRILLIANT**

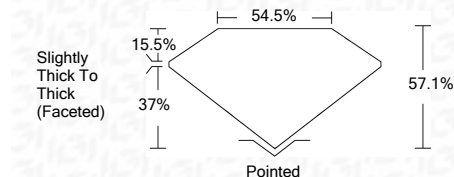
Measurements 7.26 X 8.05 X 4.60 MM

GRADING RESULTS

Carat Weight **1.53 CARAT**

Color Grade **G**

Clarity Grade VS 1



ADDITIONAL GRADING INFORMATION

Polish **EXCELLENT**Symmetry **EXCELLENT**Fluorescence **NONE**Inscription(s) **LABGROWN IGI LG515200593**

Comments: This Laboratory Grown Diamond was created by Chemical Vapor Deposition (CVD) growth process and may include post-growth treatment.
Type IIa



February 2, 2022	IGI Report No. LG61520653		HEART BRILLIANT		1.53 CARAT	
28 x 8.05 x 4.60 MM	Carat Weight	Color Grade	Clarity Grade	VS 1	57.1%	54.3%
Slightly Thick To Tapered (Faceted)						
Pointed	Polished	Excellent	Excellent	None	LARGROWN IGI	LG61520653
Fluorescence	None	LARGROWN IGI	LG61520653			
Comments:	This Laboratory Grown Diamond was created by Chemical Vapor Deposition (CVD) growth process and may include post-growth treatments.					
Type Ila						