



ELECTRONIC COPY

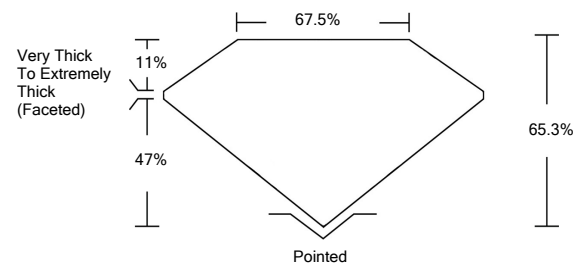
LABORATORY GROWN DIAMOND REPORT

February 8, 2022	
IGI Report Number	LG514269520
Description	LABORATORY GROWN DIAMOND
Shape and Cutting Style	CUSHION BRILLIANT
Measurements	9.55 X 8.85 X 5.78 MM
GRADING RESULTS	
Carat Weight	4.50 CARATS
Color Grade	G
Clarity Grade	VS 2
ADDITIONAL GRADING INFORMATION	
Polish	EXCELLENT
Symmetry	EXCELLENT
Fluorescence	NONE
Inscription(s)	LABGROWN IGI LG514269520

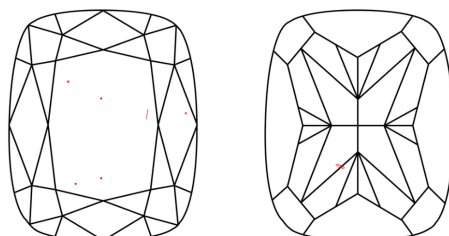
Comments: This Laboratory Grown Diamond was created by Chemical Vapor Deposition (CVD) growth process and may include post-growth treatment.
Type IIa

LG514269520

PROPORTIONS



CLARITY CHARACTERISTICS

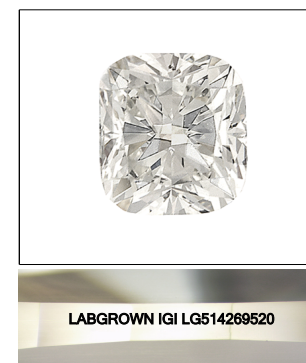


KEY TO SYMBOLS

Red symbols indicate internal characteristics.
Green symbols indicate external characteristics.

GRADING SCALES

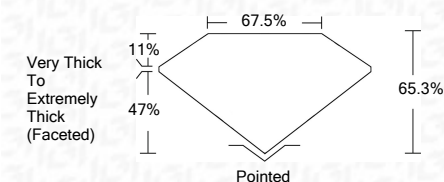
COLOR GRADING SCALE	CL	NC	FT	VL	LT	
	COLORLESS D-F	NEAR COLORLESS G-J	FAINT K-M	VERY LIGHT N-R	LIGHT S-Z	
CLARITY (10x) GRADING SCALE	FL	IF	VVS	VS	SI	I
	FLAWLESS INTERNALLY FLAWLESS	VERY VERY SLIGHTLY INCLUDED	VERY SLIGHTLY INCLUDED	SLIGHTLY INCLUDED	INCLUDED	INCLUDED



LASERSCRIBESM

Sample Image Used

February 8, 2022	
IGI Report Number	LG514269520
Description	LABORATORY GROWN DIAMOND
Shape and Cutting Style	CUSHION BRILLIANT
Measurements	9.55 X 8.85 X 5.78 MM
GRADING RESULTS	
Carat Weight	4.50 CARATS
Color Grade	G
Clarity Grade	VS 2



ADDITIONAL GRADING INFORMATION	
Polish	EXCELLENT
Symmetry	EXCELLENT
Fluorescence	NONE
Inscription(s)	LABGROWN IGI LG514269520

Comments: This Laboratory Grown Diamond was created by Chemical Vapor Deposition (CVD) growth process and may include post-growth treatment.
Type IIa



IGI

February 8, 2022	
IGI Report No. LG514269520	
CUSHION BRILLIANT	
9.55 X 8.85 X 5.78 MM	
Carat Weight	4.50 CARATS
Color Grade	G
Clarity Grade	VS 2
Depth	65.3%
Table	67.5%
Girdle	Very Thick To Extremely Thick (Faceted)
Culet	Pointed
Polish	EXCELLENT
Symmetry	EXCELLENT
Fluorescence	NONE
Inscription(s)	LABGROWN IGI LG514269520
Comments:	

This Laboratory Grown Diamond was created by Chemical Vapor Deposition (CVD) growth process and may include post-growth treatment.
Type IIa