



# INTERNATIONAL GEMOLOGICAL INSTITUTE

**ELECTRONIC COPY**

## LABORATORY GROWN DIAMOND REPORT

**LG512239412**

### IGI LABORATORY GROWN DIAMOND ID REPORT

February 8, 2022

IGI Report Number **LG512239412**

**EMERALD CUT**

**6.52 X 4.21 X 2.56 MM**

Carat Weight	0.73 CARAT
Color Grade	FANCY VIVID BLUE
Clarity Grade	VVS 2
Polish	EXCELLENT
Symmetry	VERY GOOD
Fluorescence	NONE
Inscription(s)	LABGROWN IGI LG512239412

Comments: This Laboratory Grown Diamond was created by Chemical Vapor Deposition (CVD) growth process.  
Indications of post-growth treatment.

## LABORATORY GROWN DIAMOND REPORT

### IGI LABORATORY GROWN DIAMOND IDENTIFICATION REPORT

February 8, 2022

IGI Report Number **LG512239412**

Description **LABORATORY GROWN DIAMOND**

Shape and Cutting Style **EMERALD CUT**

Measurements **6.52 X 4.21 X 2.56 MM**

### GRADING RESULTS

Carat Weight **0.73 CARAT**

Color Grade **FANCY VIVID BLUE**

Clarity Grade **VVS 2**

### ADDITIONAL GRADING INFORMATION

Polish **EXCELLENT**

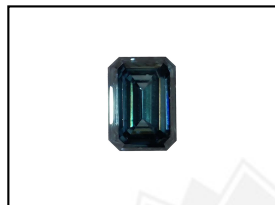
Symmetry **VERY GOOD**

Fluorescence **NONE**

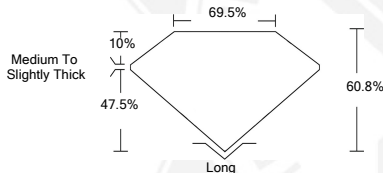
Inscription(s) **LABGROWN IGI LG512239412**

Comments: This Laboratory Grown Diamond was created by Chemical Vapor Deposition (CVD) growth process.

Indications of post-growth treatment.



**LASERSCRIBE<sup>SM</sup>**  
Sample Images Used



### IGI LABORATORY GROWN DIAMOND ID REPORT

February 8, 2022

IGI Report Number **LG512239412**

**EMERALD CUT**

**6.52 X 4.21 X 2.56 MM**

Carat Weight	0.73 CARAT
Color Grade	FANCY VIVID BLUE
Clarity Grade	VVS 2
Polish	EXCELLENT
Symmetry	VERY GOOD
Fluorescence	NONE
Inscription(s)	LABGROWN IGI LG512239412

Comments: This Laboratory Grown Diamond was created by Chemical Vapor Deposition (CVD) growth process.  
Indications of post-growth treatment.



THIS DOCUMENT WAS PRODUCED WITH THE FOLLOWING SECURITY MEASURES: SPECIAL DOCUMENT PAPER, INK SCREENS, WATERMARK, BACKGROUND DESIGN, HOLOGRAM AND OTHER SECURITY FEATURES NOT LISTED AND DO EXCEED DOCUMENT SECURITY INDUSTRY GUIDELINES.

For Terms & Conditions and to verify this report, please visit [www.igi.org](http://www.igi.org)