



**INTERNATIONAL
GEMOLOGICAL
INSTITUTE**

ELECTRONIC COPY

**LABORATORY GROWN
DIAMOND REPORT**

LG512236245

**IGI LABORATORY GROWN
DIAMOND ID REPORT**

02/08/2022

IGI Report Number **LG512236245**

PEAR BRILLIANT

7.66 X 4.59 X 2.73 MM

Carat Weight 0.56 CARAT
Color Grade FANCY VIVID PINK
Clarity Grade VS 1
Polish EXCELLENT
Symmetry VERY GOOD
Fluorescence SLIGHT
Inscription(s) LABGROWN IGI
LG512236245

Comments: This Laboratory Grown Diamond was created by Chemical Vapor Deposition (CVD) growth process. Indications of post-growth treatment.

**IGI LABORATORY GROWN
DIAMOND ID REPORT**

02/08/2022

IGI Report Number **LG512236245**

PEAR BRILLIANT

7.66 X 4.59 X 2.73 MM

Carat Weight 0.56 CARAT
Color Grade FANCY VIVID PINK
Clarity Grade VS 1
Polish EXCELLENT
Symmetry VERY GOOD
Fluorescence SLIGHT
Inscription(s) LABGROWN IGI
LG512236245

Comments: This Laboratory Grown Diamond was created by Chemical Vapor Deposition (CVD) growth process. Indications of post-growth treatment.

LABORATORY GROWN DIAMOND REPORT

IGI LABORATORY GROWN DIAMOND IDENTIFICATION REPORT

02/08/2022

IGI Report Number LG512236245

Shape and Cutting Style PEAR BRILLIANT

Measurements 7.66 X 4.59 X 2.73 MM

GRADING RESULTS

Carat Weight 0.56 CARAT

Color Grade FANCY VIVID PINK

Clarity Grade VS 1

ADDITIONAL GRADING INFORMATION

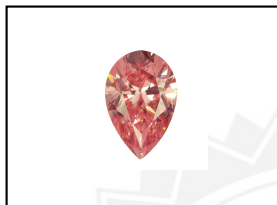
Polish EXCELLENT

Symmetry VERY GOOD

Fluorescence SLIGHT

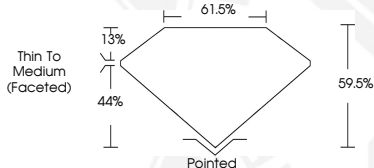
Inscription(s) LABGROWN IGI LG512236245

Comments: This Laboratory Grown Diamond was created by Chemical Vapor Deposition (CVD) growth process. Indications of post-growth treatment.



LASERSCRIBESM

Sample Image Used



This Laboratory Grown Diamond (LGD) described in this Report has been analyzed, graded and Laserscribed[®] by International Gemological Institute (IGI). A LGD has essentially the chemical, physical and optical properties as a mined diamond, with the exception of being man-made (a manufactured product). LGD's are typically produced by CVD (chemical vapor deposition) or by HPHT (high pressure high temperature) growth processes and may include post growth modifications to change the color. IGI utilizes the most advanced techniques and equipment currently available including, binocular microscopes, diamond color masters, non-contact-optical measuring device, a wide range analytical techniques including FTIR, UV-VIS-NIR, raman spectroscopy, and fluorescence analysis at various excitation wavelengths. This Report includes advanced security features. This Report is neither a guarantee, valuation nor appraisal and by making the report IGI does not agree to purchase or replace the article.

INTERNATIONAL GEMOLOGICAL INSTITUTE, INC

THIS DOCUMENT WAS PRODUCED WITH THE FOLLOWING SECURITY MEASURES: SPECIAL DOCUMENT PAPER, INK SCREENS, WATERMARK BACKGROUND DESIGNS, HOLOGRAM AND OTHER SECURITY FEATURES NOT LISTED AND DO EXCEED DOCUMENT SECURITY INDUSTRY GUIDELINES

For Terms & Conditions and to verify this report, please visit www.igi.org