



**INTERNATIONAL  
GEMOLOGICAL  
INSTITUTE**

**ELECTRONIC COPY**

**LABORATORY GROWN  
DIAMOND REPORT**

**IGI LABORATORY GROWN  
DIAMOND ID REPORT**

February 9, 2022  
IGI Report Number **LG512236243**  
**PEAR BRILLIANT**  
**7.12 X 4.54 X 2.80 MM**  
Carat Weight 0.55 CARAT  
Color Grade **FANCY VIVID PINK**  
Clarity Grade **VS 1**  
Polish **EXCELLENT**  
Symmetry **EXCELLENT**  
Fluorescence **SLIGHT**  
Inscription(s) **LABGROWN IGI  
LG512236243**

Comments: This Laboratory Grown Diamond was created by Chemical Vapor Deposition (CVD) growth process.  
Indications of post-growth treatment.

**LABORATORY GROWN DIAMOND REPORT**

**IGI LABORATORY GROWN DIAMOND IDENTIFICATION REPORT**

February 9, 2022  
IGI Report Number **LG512236243**  
Description **LABORATORY GROWN DIAMOND**  
Shape and Cutting Style **PEAR BRILLIANT**  
Measurements **7.12 X 4.54 X 2.80 MM**

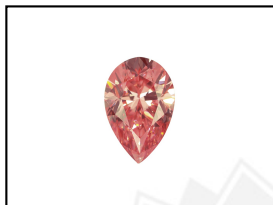
**GRADING RESULTS**

Carat Weight **0.55 CARAT**  
Color Grade **FANCY VIVID PINK**  
Clarity Grade **VS 1**

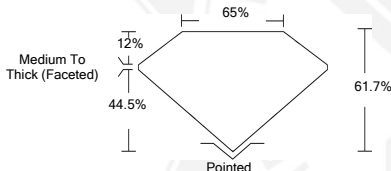
**ADDITIONAL GRADING INFORMATION**

Polish **EXCELLENT**  
Symmetry **EXCELLENT**  
Fluorescence **SLIGHT**  
Inscription(s) **LABGROWN IGI LG512236243**

Comments: This Laboratory Grown Diamond was created by Chemical Vapor Deposition (CVD) growth process.  
Indications of post-growth treatment.



**LASERSCRIBE<sup>SM</sup>**  
Sample Images Used



**IGI LABORATORY GROWN  
DIAMOND ID REPORT**

February 9, 2022  
IGI Report Number **LG512236243**  
**PEAR BRILLIANT**  
**7.12 X 4.54 X 2.80 MM**  
Carat Weight 0.55 CARAT  
Color Grade **FANCY VIVID PINK**  
Clarity Grade **VS 1**  
Polish **EXCELLENT**  
Symmetry **EXCELLENT**  
Fluorescence **SLIGHT**  
Inscription(s) **LABGROWN IGI  
LG512236243**

Comments: This Laboratory Grown Diamond was created by Chemical Vapor Deposition (CVD) growth process.  
Indications of post-growth treatment.

THIS DOCUMENT WAS PRODUCED WITH THE FOLLOWING SECURITY MEASURES: SPECIAL DOCUMENT PAPER, INK SCREENS, WATERMARK, BACKGROUND DESIGN, HOLOGRAM AND OTHER SECURITY FEATURES NOT LISTED AND DO EXCEEDED DOCUMENT SECURITY INDUSTRY GUIDELINES.

For Terms & Conditions and to verify this report, please visit [www.igi.org](http://www.igi.org)