



**INTERNATIONAL  
GEMOLOGICAL  
INSTITUTE**

**ELECTRONIC COPY**

**LABORATORY GROWN  
DIAMOND REPORT**

**IGI LABORATORY GROWN  
DIAMOND ID REPORT**

January 29, 2022  
IGI Report Number **LG512234465**  
**PEAR BRILLIANT**  
**7.35 X 4.39 X 2.81 MM**  
Carat Weight 0.52 CARAT  
Color Grade FANCY VIVID PINK  
Clarity Grade VVS 2  
Polish EXCELLENT  
Symmetry VERY GOOD  
Fluorescence SLIGHT  
Inscription(s) LABGROWN IGI  
LG512234465

Comments: This Laboratory Grown Diamond was created by Chemical Vapor Deposition (CVD) growth process.  
Indications of post-growth treatment.

**LABORATORY GROWN DIAMOND REPORT**

**IGI LABORATORY GROWN DIAMOND IDENTIFICATION REPORT**

January 29, 2022  
IGI Report Number LG512234465  
Description LABORATORY GROWN DIAMOND  
Shape and Cutting Style PEAR BRILLIANT  
Measurements 7.35 X 4.39 X 2.81 MM

**GRADING RESULTS**

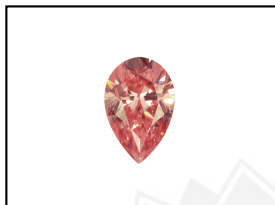
Carat Weight 0.52 CARAT  
Color Grade FANCY VIVID PINK  
Clarity Grade VVS 2

**ADDITIONAL GRADING INFORMATION**

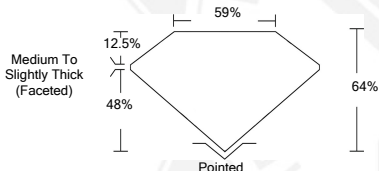
Polish EXCELLENT  
Symmetry VERY GOOD  
Fluorescence SLIGHT  
Inscription(s) LABGROWN IGI LG512234465

Comments: This Laboratory Grown Diamond was created by Chemical Vapor Deposition (CVD) growth process.  
Indications of post-growth treatment.

**LG512234465**



**LASERSCRIBE<sup>SM</sup>**  
Sample Images Used



**IGI LABORATORY GROWN  
DIAMOND ID REPORT**

January 29, 2022  
IGI Report Number **LG512234465**  
**PEAR BRILLIANT**  
**7.35 X 4.39 X 2.81 MM**  
Carat Weight 0.52 CARAT  
Color Grade FANCY VIVID PINK  
Clarity Grade VVS 2  
Polish EXCELLENT  
Symmetry VERY GOOD  
Fluorescence SLIGHT  
Inscription(s) LABGROWN IGI  
LG512234465

Comments: This Laboratory Grown Diamond was created by Chemical Vapor Deposition (CVD) growth process.  
Indications of post-growth treatment.

THIS DOCUMENT WAS PRODUCED WITH THE FOLLOWING SECURITY MEASURES: SPECIAL DOCUMENT PAPER, INK SCREENS, WATERMARK, BACKGROUND DESIGN, HOLOGRAM AND OTHER SECURITY FEATURES NOT LISTED AND DO EXCEED DOCUMENT SECURITY INDUSTRY GUIDELINES.

For Terms & Conditions and to verify this report, please visit [www.igi.org](http://www.igi.org)