



ELECTRONIC COPY

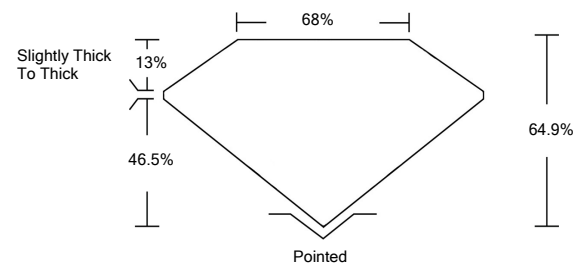
LABORATORY GROWN DIAMOND REPORT

January 31, 2022	
IGI Report Number	LG512227225
Description	LABORATORY GROWN DIAMOND
Shape and Cutting Style	CUT CORNERED RECTANGULAR MODIFIED BRILLIANT
Measurements	7.23 X 5.16 X 3.35 MM
GRADING RESULTS	
Carat Weight	1.15 CARAT
Color Grade	G
Clarity Grade	VS 2
ADDITIONAL GRADING INFORMATION	
Polish	EXCELLENT
Symmetry	EXCELLENT
Fluorescence	NONE
Inscription(s)	LABGROWN IGI LG512227225

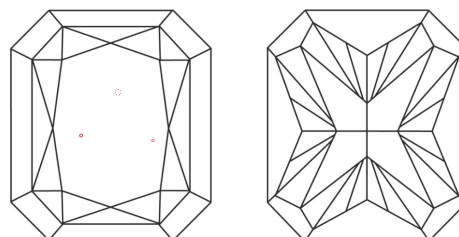
Comments: This Laboratory Grown Diamond was created by Chemical Vapor Deposition (CVD) growth process and may include post-growth treatment.
Type IIa

LG512227225

PROPORTIONS



CLARITY CHARACTERISTICS

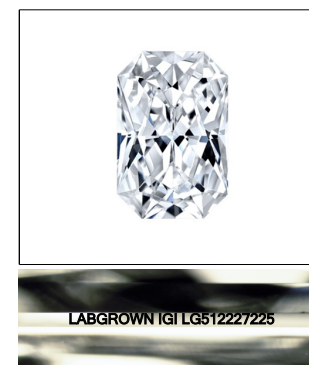


KEY TO SYMBOLS

Red symbols indicate internal characteristics.
Green symbols indicate external characteristics.

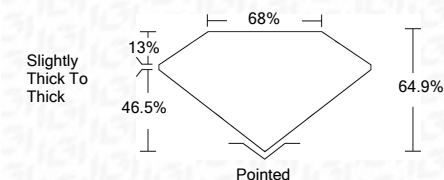
GRADING SCALES

COLOR GRADING SCALE	CL	NC	FT	VLT	LT	
	COLORLESS D-F	NEAR COLORLESS G-J	FAINT K-M	VERY LIGHT N-R	LIGHT S-Z	
CLARITY (10x) GRADING SCALE	FL	IF	VVS	VS	SI	I
	FLAWLESS INTERNALLY FLAWLESS	VERY VERY SLIGHTLY INCLUDED	VERY SLIGHTLY INCLUDED	SLIGHTLY INCLUDED	INCLUDED	



LASERSCRIBESM
Sample Image Used

January 31, 2022	
IGI Report Number	LG512227225
Description	LABORATORY GROWN DIAMOND
Shape and Cutting Style	CUT CORNERED RECTANGULAR MODIFIED BRILLIANT
Measurements	7.23 X 5.16 X 3.35 MM
GRADING RESULTS	
Carat Weight	1.15 CARAT
Color Grade	G
Clarity Grade	VS 2



ADDITIONAL GRADING INFORMATION	
Polish	EXCELLENT
Symmetry	EXCELLENT
Fluorescence	NONE
Inscription(s)	LABGROWN IGI LG512227225

Comments: This Laboratory Grown Diamond was created by Chemical Vapor Deposition (CVD) growth process and may include post-growth treatment.
Type IIa



IGI

IGI Report No. LG512227225	CUT CORNERED RECT. MODIFIED BRILLIANT X 3.35 MM	Carat Weight 1.15 CARAT	Color Grade G	Clarity Grade VS 2	Depth 64.9%	Table 68%	Grade Slightly Thick To Thick	Culet Pointed	Polish EXCELLENT	Symmetry EXCELLENT	Fluorescence NONE	Inscription(s) LABGROWN IGI LG512227225	Comments: This Laboratory Grown Diamond was created by Chemical Vapor Deposition (CVD) growth process and may include post-growth treatment. Type IIa
----------------------------	--	-----------------------------------	-------------------------	------------------------------	-----------------------	---------------------	---	-------------------------	----------------------------	------------------------------	-----------------------------	---	---