



ELECTRONIC COPY

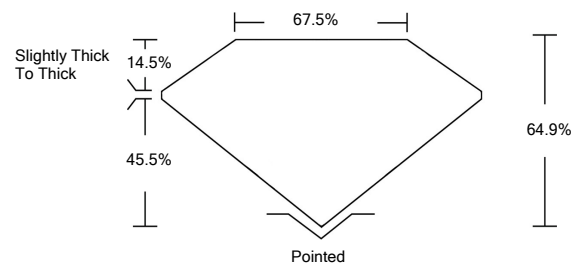
LABORATORY GROWN DIAMOND REPORT

January 29, 2022	
IGI Report Number	LG512224123
Description	LABORATORY GROWN DIAMOND
Shape and Cutting Style	CUT CORNERED RECTANGULAR MODIFIED BRILLIANT
Measurements	8.32 X 5.59 X 3.63 MM
GRADING RESULTS	
Carat Weight	1.50 CARAT
Color Grade	I
Clarity Grade	SI 1
ADDITIONAL GRADING INFORMATION	
Polish	EXCELLENT
Symmetry	EXCELLENT
Fluorescence	NONE
Inscription(s)	LABGROWN IGI LG512224123

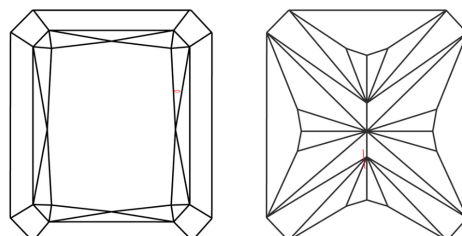
Comments: This Laboratory Grown Diamond was created by Chemical Vapor Deposition (CVD) growth process and may include post-growth treatment.
Type IIa

LG512224123

PROPORTIONS



CLARITY CHARACTERISTICS

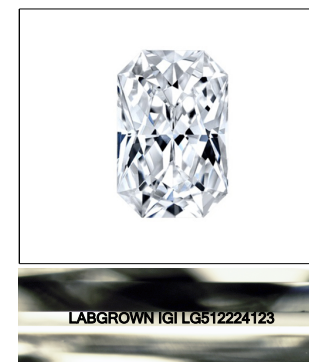


KEY TO SYMBOLS

Red symbols indicate internal characteristics.
Green symbols indicate external characteristics.

GRADING SCALES

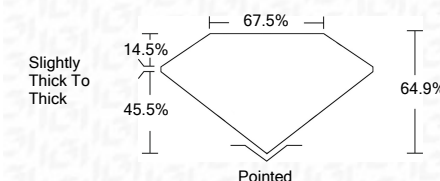
COLOR GRADING SCALE	CL	NC	FT	VL	LT	
	COLORLESS D-F	NEAR COLORLESS G-J	FAINT K-M	VERY LIGHT N-R	LIGHT S-Z	
CLARITY (10x) GRADING SCALE	FL	IF	VVS	VS	SI	I
	FLAWLESS INTERNALLY FLAWLESS	VERY VERY SLIGHTLY INCLUDED	VERY SLIGHTLY INCLUDED	SLIGHTLY INCLUDED	INCLUDED	



LASERSCRIBESM

Sample Image Used

January 29, 2022	
IGI Report Number	LG512224123
Description	LABORATORY GROWN DIAMOND
Shape and Cutting Style	CUT CORNERED RECTANGULAR MODIFIED BRILLIANT
Measurements	8.32 X 5.59 X 3.63 MM
GRADING RESULTS	
Carat Weight	1.50 CARAT
Color Grade	I
Clarity Grade	SI 1



ADDITIONAL GRADING INFORMATION	
Polish	EXCELLENT
Symmetry	EXCELLENT
Fluorescence	NONE
Inscription(s)	LABGROWN IGI LG512224123

Comments: This Laboratory Grown Diamond was created by Chemical Vapor Deposition (CVD) growth process and may include post-growth treatment.
Type IIa



IGI

January 29, 2022	
IGI Report No. LG512224123	
CUT CORNERED RECT. MODIFIED BRILLIANT	
Measurements 8.32 X 5.59 X 3.63 MM	
Carat Weight 1.50 CARAT	
Color Grade I	
Clarity Grade SI 1	
Depth 64.9%	
Table 14.5%	
Girdle Slightly Thick To Thick	
Culet Pointed	
Polish EXCELLENT	
Symmetry EXCELLENT	
Fluorescence NONE	
Inscription(s) LABGROWN IGI LG512224123	
Comments: This Laboratory Grown Diamond was created by Chemical Vapor Deposition (CVD) growth process and may include post-growth treatment. Type IIa	