



**ELECTRONIC COPY**

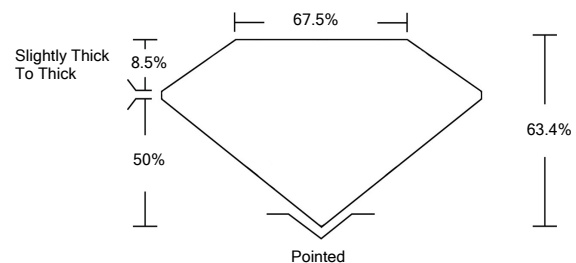
**LABORATORY GROWN DIAMOND REPORT**

|                                       |  |
|---------------------------------------|--|
| January 27, 2022                      |  |
| IGI Report Number                     | <b>LG512224113</b>   |
| Description                           | <b>LABORATORY GROWN<br/>DIAMOND</b>                        |
| Shape and Cutting Style               | <b>CUT CORNERED<br/>RECTANGULAR MODIFIED<br/>BRILLIANT</b> |
| Measurements                          | <b>7.81 X 5.66 X 3.59 MM</b>                               |
| <b>GRADING RESULTS</b>                |  |
| Carat Weight                          | <b>1.40 CARAT</b>  |
| Color Grade                           | <b>G</b>   |
| Clarity Grade                         | <b>VS 1</b>  |
| <b>ADDITIONAL GRADING INFORMATION</b> |  |
| Polish                                | <b>EXCELLENT</b>   |
| Symmetry                              | <b>EXCELLENT</b>   |
| Fluorescence                          | <b>NONE</b>  |
| Inscription(s)                        | <b>LABGROWN IGI LG512224113</b>                            |

Comments: This Laboratory Grown Diamond was created by Chemical Vapor Deposition (CVD) growth process and may include post-growth treatment. Type IIa

LG512224113

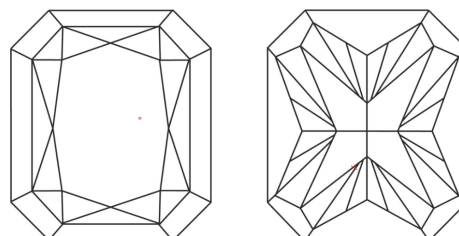
**PROPORTIONS**



**GRADING SCALES**

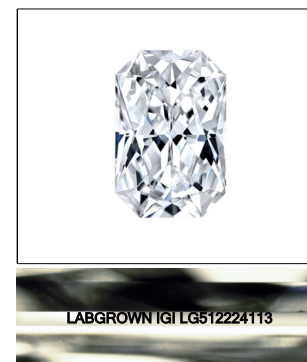
|                             |                              |                             |                        |                   |           |   |
|-----------------------------|------------------------------|-----------------------------|------------------------|-------------------|-----------|---|
| COLOR GRADING SCALE         | CL                           | NC                          | FT                     | VL                | LT        |   |
|                             | COLORLESS D-F                | NEAR COLORLESS G-J          | FAINT K-M              | VERY LIGHT N-R    | LIGHT S-Z |   |
| CLARITY (10x) GRADING SCALE | FL                           | IF                          | VVS                    | VS                | SI        | I |
|                             | FLAWLESS INTERNALLY FLAWLESS | VERY VERY SLIGHTLY INCLUDED | VERY SLIGHTLY INCLUDED | SLIGHTLY INCLUDED | INCLUDED  |   |

**CLARITY CHARACTERISTICS**



**KEY TO SYMBOLS**

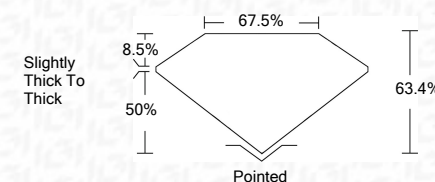
Red symbols indicate internal characteristics.  
Green symbols indicate external characteristics.



**LASERSCRIBE<sup>SM</sup>**

Sample Image Used

|                         |  |
|-------------------------|--|
| January 27, 2022        |  |
| IGI Report Number       | <b>LG512224113</b>   |
| Description             | <b>LABORATORY GROWN<br/>DIAMOND</b>                        |
| Shape and Cutting Style | <b>CUT CORNERED<br/>RECTANGULAR MODIFIED<br/>BRILLIANT</b> |
| Measurements            | <b>7.81 X 5.66 X 3.59 MM</b>                               |
| <b>GRADING RESULTS</b>  |  |
| Carat Weight            | <b>1.40 CARAT</b>  |
| Color Grade             | <b>G</b>   |
| Clarity Grade           | <b>VS 1</b>  |



|                                       |                                 |
|---------------------------------------|---------------------------------|
| <b>ADDITIONAL GRADING INFORMATION</b> |                                 |
| Polish                                | <b>EXCELLENT</b>                |
| Symmetry                              | <b>EXCELLENT</b>                |
| Fluorescence                          | <b>NONE</b>                     |
| Inscription(s)                        | <b>LABGROWN IGI LG512224113</b> |

Comments: This Laboratory Grown Diamond was created by Chemical Vapor Deposition (CVD) growth process and may include post-growth treatment. Type IIa



**IGI**

|  |  |
|--|--|
| January 27, 2022                         |  |
| IGI Report No. LG512224113               |  |
| CUT CORNERED RECT. MODIFIED<br>BRILLIANT |  |
| MEASUREMENTS<br>7.81 X 5.66 X 3.59 MM    |  |
| Carat Weight                             | <b>1.40 CARAT</b>  |
| Color Grade                              | <b>G</b>   |
| Clarity Grade                            | <b>VS 1</b>  |
| Depth                                    | <b>63.4%</b>   |
| Table                                    | <b>50%</b>   |
| Grades                                   | <b>Slightly Thick To Thick</b>   |
| Culet                                    | <b>Pointed</b>   |
| Polish                                   | <b>EXCELLENT</b>   |
| Symmetry                                 | <b>EXCELLENT</b>   |
| Fluorescence                             | <b>NONE</b>  |
| Inscription(s)                           | <b>LABGROWN IGI<br/>LG512224113</b>  |
| Comments:                                | <b>This Laboratory Grown Diamond was created by Chemical Vapor Deposition (CVD) growth process and may include post-growth treatment. Type IIa</b> |

