

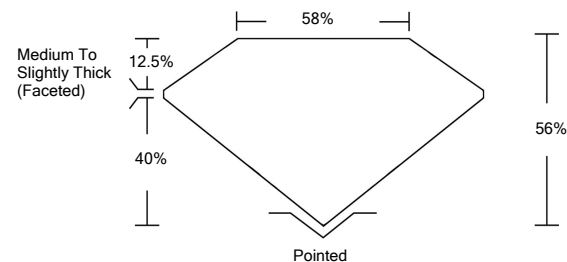


**ELECTRONIC COPY**

**LABORATORY GROWN DIAMOND REPORT**

LG512205080

**PROPORTIONS**



**GRADING SCALES**

COLOR GRADING SCALE	CL	NC	FT	VLT	LT	
	COLORLESS D-F	NEAR COLORLESS G-J	FAINT K-M	VERY LIGHT N-R	LIGHT S-Z	
CLARITY (10x) GRADING SCALE	FL	IF	VVS	VS	SI	I
	FLAWLESS INTERNALLY FLAWLESS	VERY VERY SLIGHTLY INCLUDED	VERY SLIGHTLY INCLUDED	SLIGHTLY INCLUDED	INCLUDED	

January 23, 2022

IGI Report Number

**LG512205080**

Description

**LABORATORY GROWN DIAMOND**

Shape and Cutting Style

**HEART BRILLIANT**

Measurements

**7.66 X 8.97 X 5.02 MM**

**GRADING RESULTS**

Carat Weight

**2.01 CARATS**

Color Grade

**G**

Clarity Grade

**VVS 2**

January 23, 2022

IGI Report Number

**LG512205080**

Description

**LABORATORY GROWN DIAMOND**

Shape and Cutting Style

**HEART BRILLIANT**

Measurements

**7.66 X 8.97 X 5.02 MM**

**GRADING RESULTS**

Carat Weight

**2.01 CARATS**

Color Grade

**G**

Clarity Grade

**VVS 2**

**ADDITIONAL GRADING INFORMATION**

Polish

**EXCELLENT**

Symmetry

**EXCELLENT**

Fluorescence

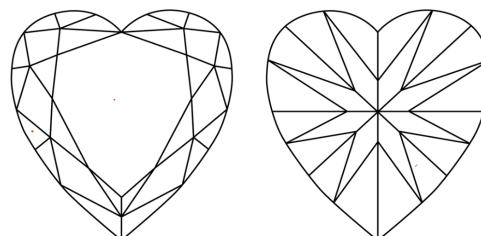
**NONE**

Inscription(s)

**LABGROWN IGI LG512205080**

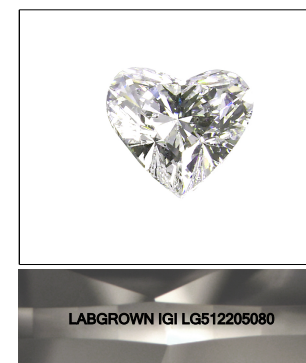
Comments: This Laboratory Grown Diamond was created by Chemical Vapor Deposition (CVD) growth process and may include post-growth treatment. Type IIa

**CLARITY CHARACTERISTICS**



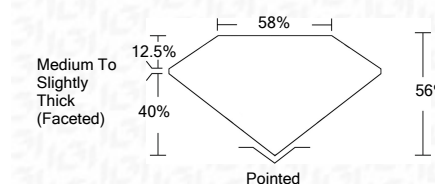
**KEY TO SYMBOLS**

Red symbols indicate internal characteristics.  
Green symbols indicate external characteristics.



**LASERSCRIBE<sup>SM</sup>**

Sample Image Used



**ADDITIONAL GRADING INFORMATION**

Polish

**EXCELLENT**

Symmetry

**EXCELLENT**

Fluorescence

**NONE**

Inscription(s)

**LABGROWN IGI LG512205080**

Comments: This Laboratory Grown Diamond was created by Chemical Vapor Deposition (CVD) growth process and may include post-growth treatment. Type IIa



**IGI**

January 23, 2022  
IGI Report No. LG512205080  
**HEART BRILLIANT**  
7.66 X 8.97 X 5.02 MM  
Carat Weight  
Color Grade  
Clarity Grade  
Depth  
Table  
Girdle  
Culet  
Polish  
Symmetry  
Fluorescence  
Inscription(s)  
Comments:  
This Laboratory Grown Diamond was created by Chemical Vapor Deposition (CVD) growth process and may include post-growth treatment. Type IIa

**2.01 CARATS**  
**G**  
**VVS 2**  
**58%**  
**56%**  
**Medium To Slightly Thick (Faceted)**  
**Pointed**  
**EXCELLENT**  
**EXCELLENT**  
**NONE**  
**LABGROWN IGI LG512205080**