

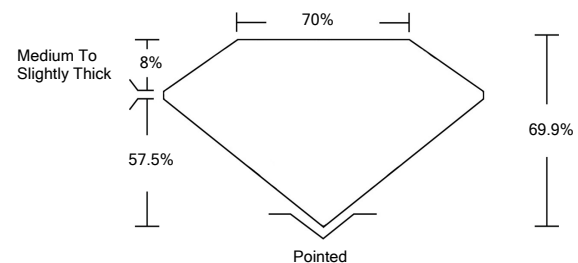


ELECTRONIC COPY

LABORATORY GROWN DIAMOND REPORT

LG510184217

PROPORTIONS



GRADING SCALES

COLOR GRADING SCALE	CL	NC	FT	VLT	LT	
	COLORLESS D-F	NEAR COLORLESS G-J	FAINT K-M	VERY LIGHT N-R	LIGHT S-Z	
CLARITY (10x) GRADING SCALE	FL	IF	VVS	VS	SI	I
	FLAWLESS INTERNALLY FLAWLESS	VERY VERY SLIGHTLY INCLUDED	VERY SLIGHTLY INCLUDED	SLIGHTLY INCLUDED	INCLUDED	INCLUDED

January 17, 2022

IGI Report Number

LG510184217

Description

**LABORATORY GROWN
DIAMOND**

Shape and Cutting Style

PRINCESS CUT

Measurements

7.26 X 7.02 X 4.91 MM

GRADING RESULTS

Carat Weight

2.15 CARATS

Color Grade

G

Clarity Grade

VS 1

January 17, 2022

IGI Report Number

LG510184217

Description

**LABORATORY GROWN
DIAMOND**

Shape and Cutting Style

PRINCESS CUT

Measurements

7.26 X 7.02 X 4.91 MM

GRADING RESULTS

Carat Weight

2.15 CARATS

Color Grade

G

Clarity Grade

VS 1

ADDITIONAL GRADING INFORMATION

Polish

EXCELLENT

Symmetry

VERY GOOD

Fluorescence

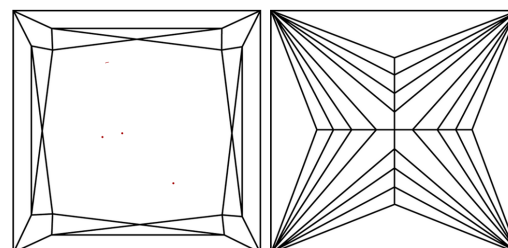
NONE

Inscription(s)

LABGROWN IGI LG510184217

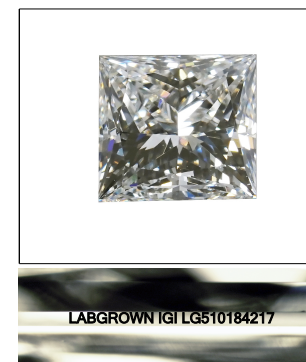
Comments: This Laboratory Grown Diamond was created by Chemical Vapor Deposition (CVD) growth process and may include post-growth treatment.
Type IIa

CLARITY CHARACTERISTICS



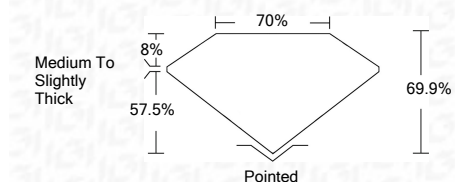
KEY TO SYMBOLS

Red symbols indicate internal characteristics.
Green symbols indicate external characteristics.



LASERSCRIBESM

Sample Images Used



ADDITIONAL GRADING INFORMATION

Polish

EXCELLENT

Symmetry

VERY GOOD

Fluorescence

NONE

Inscription(s)

LABGROWN IGI LG510184217

Comments: This Laboratory Grown Diamond was created by Chemical Vapor Deposition (CVD) growth process and may include post-growth treatment.
Type IIa



IGI



January 17, 2022
IGI Report No. LG510184217
PRINCESS CUT
7.26 X 7.02 X 4.91 MM
Carat Weight
Color Grade **G**
Clarity Grade **VS 1**
Depth **69.9%**
Table **70%**
Girdle **Medium To Slightly Thick**
Culet **Pointed**
Polish **EXCELLENT**
Symmetry **VERY GOOD**
Fluorescence **NONE**
Inscription(s) **LABGROWN IGI LG510184217**
Comments: This Laboratory Grown Diamond was created by Chemical Vapor Deposition (CVD) growth process and may include post-growth treatment.
Type IIa