

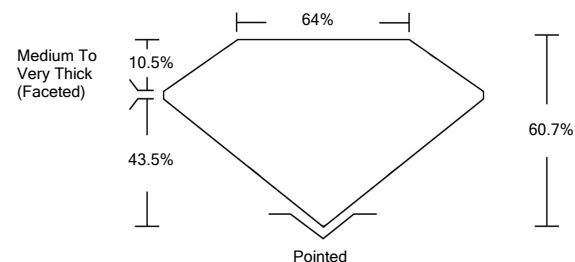


ELECTRONIC COPY

LABORATORY GROWN DIAMOND REPORT

LG510184183

PROPORTIONS



GRADING SCALES

COLOR GRADING SCALE	CL	NC	FT	VLT	LT	
	COLORLESS D-F	NEAR COLORLESS G-J	FAINT K-M	VERY LIGHT N-R	LIGHT S-Z	
CLARITY (10x) GRADING SCALE	FL	IF	VVS	VS	SI	I
	FLAWLESS INTERNALLY FLAWLESS	VERY VERY SLIGHTLY INCLUDED	VERY SLIGHTLY INCLUDED	SLIGHTLY INCLUDED	INCLUDED	

January 17, 2022

IGI Report Number

LG510184183

Description

**LABORATORY GROWN
DIAMOND**

Shape and Cutting Style

HEART BRILLIANT

Measurements

8.37 X 9.52 X 5.78 MM

GRADING RESULTS

Carat Weight

2.70 CARATS

Color Grade

F

Clarity Grade

VS 2

January 17, 2022

IGI Report Number

LG510184183

Description

**LABORATORY GROWN
DIAMOND**

Shape and Cutting Style

HEART BRILLIANT

Measurements

8.37 X 9.52 X 5.78 MM

GRADING RESULTS

Carat Weight

2.70 CARATS

Color Grade

F

Clarity Grade

VS 2

ADDITIONAL GRADING INFORMATION

Polish

EXCELLENT

Symmetry

EXCELLENT

Fluorescence

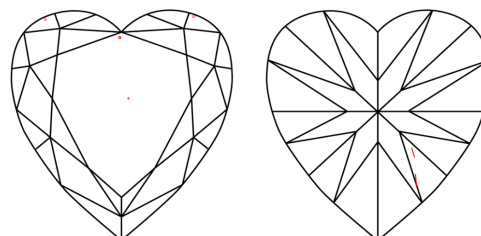
NONE

Inscription(s)

LABGROWN IGI LG510184183

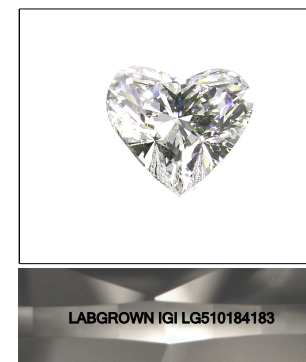
Comments: This Laboratory Grown Diamond was created by Chemical Vapor Deposition (CVD) growth process and may include post-growth treatment.
Type IIa

CLARITY CHARACTERISTICS



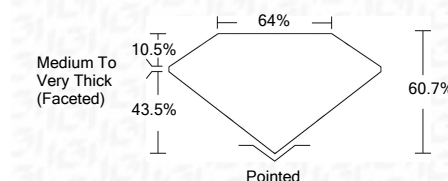
KEY TO SYMBOLS

Red symbols indicate internal characteristics.
Green symbols indicate external characteristics.



LASERSCRIBESM

Sample Images Used



ADDITIONAL GRADING INFORMATION

Polish

EXCELLENT

Symmetry

EXCELLENT

Fluorescence

NONE

Inscription(s)

LABGROWN IGI LG510184183

Comments: This Laboratory Grown Diamond was created by Chemical Vapor Deposition (CVD) growth process and may include post-growth treatment.
Type IIa



IGI

IGI Report No. LG510184183	HEART BRILLIANT	8.37 X 9.52 X 5.78 MM	2.70 CARATS	F	VS 2	60.7%	64%	Medium To Very Thick (Faceted)	Pointed	EXCELLENT	EXCELLENT	NONE	LABGROWN IGI LG510184183	Comments:
January 17, 2022														This Laboratory Grown Diamond was created by Chemical Vapor Deposition (CVD) growth process and may include post-growth treatment. Type IIa