



**ELECTRONIC COPY**

# LABORATORY GROWN DIAMOND REPORT

LABORATORY GROWN DIAMOND REPORT

# LABORATORY GROWN DIAMOND REPORT

December 24, 2021	
IGI Report Number	LG508125927
Description	LABORATORY GROWN DIAMOND
Shape and Cutting Style	PRINCESS CUT
Measurements	8.37 X 8.24 X 5.78 MM

## GRADING RESULTS

Carat Weight	3.54 CARATS
Color Grade	G
Clarity Grade	VS 1

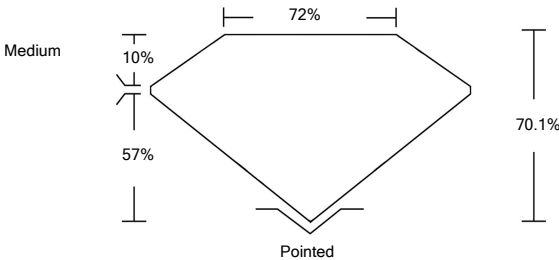
## ADDITIONAL GRADING INFORMATION

Polish	EXCELLENT
Symmetry	EXCELLENT
Fluorescence	NONE
Inscription(s)	LABGROWN IGI LG508125927

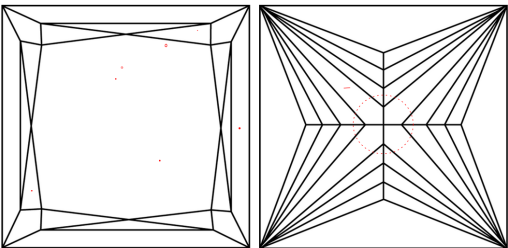
Comments: This Laboratory Grown Diamond was created by Chemical Vapor Deposition (CVD) growth process and may include post-growth treatment  
Type IIa

LG508125927

## PROPORTIONS



## CLARITY CHARACTERISTICS

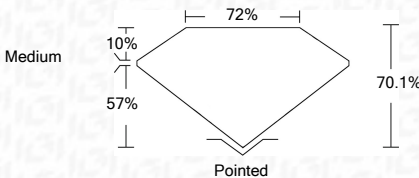
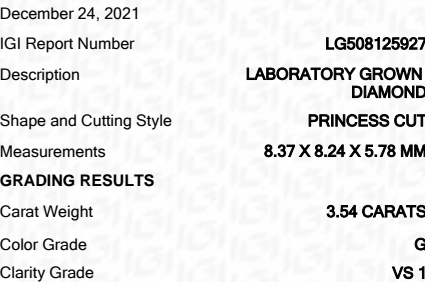


## KEY TO SYMBOLS

Red symbols indicate internal characteristics.  
Green symbols indicate external characteristics.

## GRADING SCALES

COLOR GRADING SCALE	CL		NC		FT		VLT		LT	
	COLORLESS D-F		NEAR COLORLESS G-J		FAINT K-M		VERY LIGHT N-R		LIGHT S-Z	
CLARITY (10x) GRADING SCALE	FL	IF	VVS		VS		SI		I	
	FLAWLESS INTERNALLY FLAWLESS		VERY VERY SLIGHTLY INCLUDED		VERY SLIGHTLY INCLUDED		SLIGHTLY INCLUDED		INCLUDED	

**LASERSCRIBE<sup>SM</sup>**

### ADDITIONAL GRADING INFORMATION

Polish	EXCELLENT
Symmetry	EXCELLENT
Fluorescence	NONE
Inscription(s)	LABGROWN IGI LG508125927

Comments: This Laboratory Grown Diamond was created by Chemical Vapor Deposition (CVD) growth process and may include post-growth treatment  
Type IIa



IGI

December 24, 2021	IGI Report No. LGS09125927	PRINCESS CUT	8.37 X 8.24 X 5.78 MM	3.54 CARATS	G	VS 1	70.1%	72%	Medium		Polished	EXCELLENT	EXCELLENT	NONE	LARGROWN IGI LGS09125927	<p>This Laboratory Grown Diamond was created by Chemical Vapor Deposition (CVD) growth process and may include post-growth treatments.</p> <p><b>Type IIIa</b></p>
		Carat Weight	Color Grade	Clarity Grade	Depth	Table	Girdle	Culet	Polish	Symmetry	Fluorescence	Inscriptions	Comments:			

**This Laboratory Grown Diamond was created by Chemical Vapor Deposition (CVD) growth process and may include post-growth treatment**  
**Type IIa**

