



ELECTRONIC COPY

LABORATORY GROWN DIAMOND REPORT

LABORATORY GROWN DIAMOND REPORT

LABORATORY GROWN DIAMOND REPORT

| | |
|-------------------------|-----------------------------|
| December 27, 2021 | |
| IGI Report Number | LG508117449 |
| Description | LABORATORY GROWN DIAMOND |
| Shape and Cutting Style | PRINCESS CUT |
| Measurements | 6.24 X 6.13 X 4.16 MM |

GRADING RESULTS

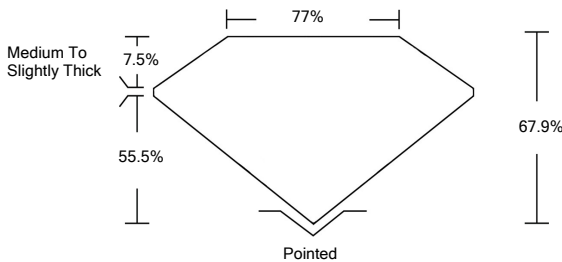
| | |
|---------------|------------------|
| Carat Weight | 1.40 CARAT |
| Color Grade | FANCY VIVID BLUE |
| Clarity Grade | VS 1 |

ADDITIONAL GRADING INFORMATION

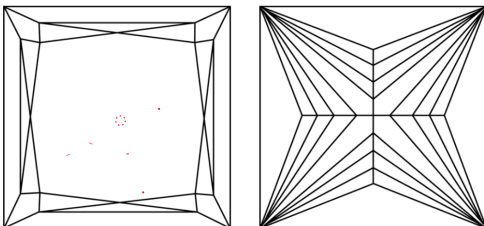
| | |
|----------------|--------------------------|
| Polish | EXCELLENT |
| Symmetry | VERY GOOD |
| Fluorescence | NONE |
| Inscription(s) | LABGROWN IGI LG508117449 |

Comments: This Laboratory Grown Diamond was created by Chemical Vapor Deposition (CVD) growth process.
Indications of post-growth treatment.

PROPORTIONS



CLARITY CHARACTERISTICS



KEY TO SYMBOLS

Red symbols indicate internal characteristics.
Green symbols indicate external characteristics.

GRADING SCALES

| | | | | | | | | | | |
|-----------------------------|------------------------------------|----|-----------------------------------|--|------------------------------|--|----------------------|--|--------------|--|
| COLOR GRADING SCALE | CL | | NC | | FT | | VLT | | LT | |
| | COLORLESS D-F | | NEAR COLORLESS G-J | | FAINT K-M | | VERY LIGHT N-R | | LIGHT S-Z | |
| CLARITY (10x) GRADING SCALE | FL | IF | VVS | | VS | | SI | | I | |
| | FLAWLESS INTERNALLY FLAWLESS | | VERY VERY SLIGHTLY INCLUDED | | VERY SLIGHTLY INCLUDED | | SLIGHTLY INCLUDED | | INCLUDED | |

The laboratory grown diamond described in this Report (Report) has been graded, tested, analyzed, examined and/or inscribed by International Gemological Institute (IGI). A laboratory grown diamond is one that has essentially the same chemical, physical and optical properties as a natural diamond. IGI is an independent, not-for-profit organization (a manufactured product). IGI employs and utilizes those techniques and equipment currently available to IGI, including, without limitation, 10X magnification, corrected triplet loupe, binocular microscope, master color comparison stones, non-contact-optical spectrophotometer, and/or other instruments and/or processes as deemed appropriate by IGI. This Report includes advanced security features. A duly accredited gemologist or jeweler can advise you with respect to the importance of and interrelationship between cut, color, clarity and carat weight.

THIS REPORT IS NEITHER A GUARANTEE, VALUATION, NOR APPRAISAL OF THE GEMSTONE DESCRIBED HEREIN. PLEASE REVIEW THE LIMITATIONS AND RESTRICTIONS SET FORTH ONLINE. FOR MORE INFORMATION, VISIT WWW.IGI.ORG OR CALL 1-888-BUY-IGI.

© INTERNATIONAL GEMOLOGICAL INSTITUTE, INC.

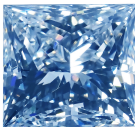


PHOTO ENLARGED

LABGROWN IGI LG508117449

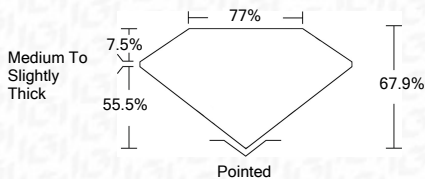
LASERSCRIBESM

© IGI 2020, International Gemological Institute

FD - 10 20

www.igi.org

| | |
|-------------------------|-----------------------------|
| December 27, 2021 | |
| IGI Report Number | LG50811749 |
| Description | LABORATORY GROWN DIAMOND |
| Shape and Cutting Style | PRINCESS CUT |
| Measurements | 6.24 X 6.13 X 4.16 MM |
| GRADING RESULTS | |
| Carat Weight | 1.40 CARAT |
| Color Grade | FANCY VIVID BLUE |
| Clarity Grade | VS 1 |



ADDITIONAL GRADING INFORMATION

| | |
|----------------|--------------------------|
| Polish | EXCELLENT |
| Symmetry | VERY GOOD |
| Fluorescence | NONE |
| Inscription(s) | LABGROWN IGI LG508117449 |

Comments: This Laboratory Grown Diamond was created by Chemical Vapor Deposition (CVD) growth process.
Indications of post-growth treatment.



IGI

| | | | | | | | |
|-------------------|----------------------------|---|--------------------------|---|---|--|---|
| December 27, 2021 | IGI Report No. LG508117449 | PRINCESS CUT 1.40 CARAT FANCY VIVID BLUE | | VS 1 67.5% 77% | Pointed EXCELLENT VERY GOOD NONE | LARGROWN 1G LG508117449 | Comments: This Laboratory Grown Diamond was created by Chemical Vapor Deposition (CVD) growth process. Indications of post-growth treatment. |
| | | Carat Weight Color Grade Clarity Grade | Depth Table Girdle | Medium To Slightly Thick | Cut Polish Symmetry Fluorescence Inclusions (P) | | |
| | | 6.24 X 6.13 X 4.16 MM Carat Weight Color Grade | 34.5 59 1.1 | | | | |