



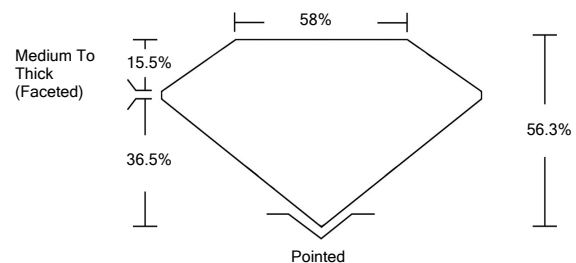
LG508117390

LABORATORY GROWN DIAMOND REPORT

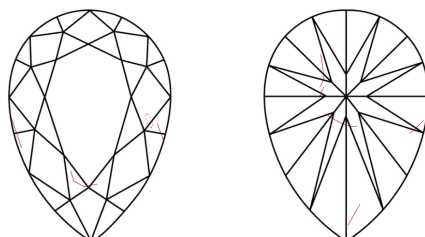
December 28, 2021	
IGI Report Number	LG508117390
Description	LABORATORY GROWN DIAMOND
Shape and Cutting Style	PEAR BRILLIANT
Measurements	8.70 X 5.74 X 3.23 MM
GRADING RESULTS	
Carat Weight	1.01 CARAT
Color Grade	FANCY VIVID PINK
Clarity Grade	SI 2
ADDITIONAL GRADING INFORMATION	
Polish	EXCELLENT
Symmetry	VERY GOOD
Fluorescence	SLIGHT
Inscription(s)	LABGROWN IGI LG508117390

Comments: This Laboratory Grown Diamond was created by Chemical Vapor Deposition (CVD) growth process. Indications of post-growth treatment.

PROPORTIONS



CLARITY CHARACTERISTICS

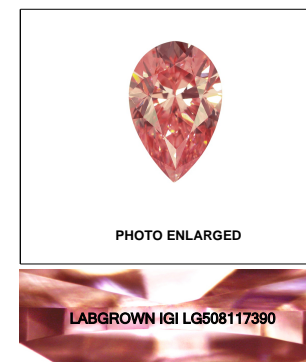


KEY TO SYMBOLS

Red symbols indicate internal characteristics.
Green symbols indicate external characteristics.

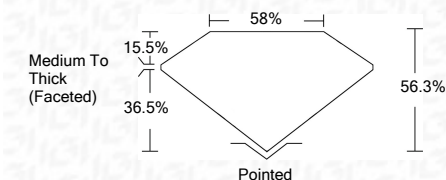
GRADING SCALES

COLOR GRADING SCALE	CL	NC	FT	VL	LT	
	COLORLESS D-F	NEAR COLORLESS G-J	FAINT K-M	VERY LIGHT N-R	LIGHT S-Z	
CLARITY (10x) GRADING SCALE	FL	IF	VVS	VS	SI	I
	FLAWLESS INTERNALLY FLAWLESS	VERY VERY SLIGHTLY INCLUDED	VERY SLIGHTLY INCLUDED	SLIGHTLY INCLUDED	INCLUDED	



LASERSCRIBESM

December 28, 2021	
IGI Report Number	LG508117390
Description	LABORATORY GROWN DIAMOND
Shape and Cutting Style	PEAR BRILLIANT
Measurements	8.70 X 5.74 X 3.23 MM
GRADING RESULTS	
Carat Weight	1.01 CARAT
Color Grade	FANCY VIVID PINK
Clarity Grade	SI 2



ADDITIONAL GRADING INFORMATION

Polish	EXCELLENT
Symmetry	VERY GOOD
Fluorescence	SLIGHT
Inscription(s)	LABGROWN IGI LG508117390

Comments: This Laboratory Grown Diamond was created by Chemical Vapor Deposition (CVD) growth process. Indications of post-growth treatment.



IGI

December 28, 2021	
IGI Report No. LG508117390	
PEAR BRILLIANT	
8.70 X 5.74 X 3.23 MM	
Carat Weight	1.01 CARAT
Color Grade	FANCY VIVID PINK
Clarity Grade	SI 2
Depth	56.3%
Table	58%
Girdle	Medium To Thick (Faceted)
Culet	Pointed
Polish	EXCELLENT
Symmetry	VERY GOOD
Fluorescence	SLIGHT
Inscription(s)	LABGROWN IGI LG508117390
Comments:	

This Laboratory Grown Diamond was created by Chemical Vapor Deposition (CVD) growth process. Indications of post-growth treatment.