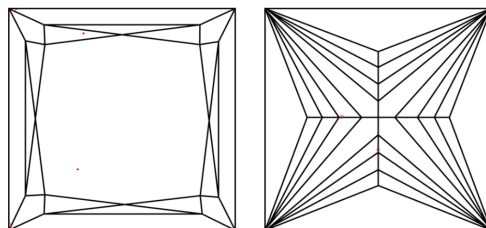
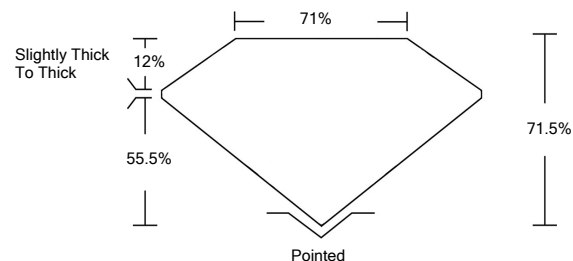




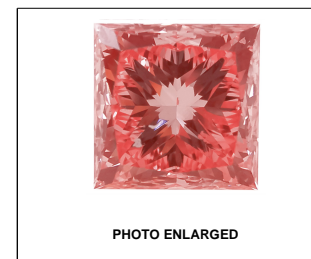
Comments: This Laboratory Grown Diamond was created by Chemical Vapor Deposition (CVD) growth process.
Indications of post-growth treatment.

LG508117373



Red symbols indicate internal characteristics.
Green symbols indicate external characteristics.

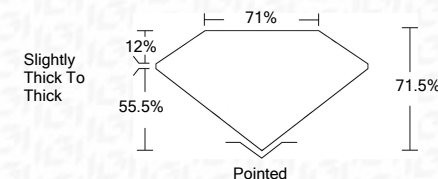
COLOR GRADING SCALE	CL		NC	FT	VLT	LT
	COLORLESS D-F		NEAR COLORLESS G-J	FAINT K-M	VERY LIGHT N-R	LIGHT S-Z
CLARITY (10x) GRADING SCALE	FL	IF	VVS	VS	SI	I
	FLAWLESS INTERNALLY FLAWLESS		VERY VERY SLIGHTLY INCLUDED	VERY SLIGHTLY INCLUDED	SLIGHTLY INCLUDED	INCLUDED



LABGROWN IGI LG508117373

LASERSCRIBESM

December 27, 2021	
IGI Report Number	LG508117373
Description	LABORATORY GROWN DIAMOND
Shape and Cutting Style	PRINCESS CUT
Measurements	7.34 X 7.19 X 5.14 MM
GRADING RESULTS	
Carat Weight	2.50 CARATS
Color Grade	FANCY INTENSE PINK
Clarity Grade	VVS 2



ADDITIONAL GRADING INFORMATION

Polish	EXCELLENT
Symmetry	EXCELLENT
Fluorescence	SLIGHT
Inscription(s)	LABGROWN IGI LG508117373

Comments: This Laboratory Grown Diamond was created by Chemical Vapor Deposition (CVD) growth process. Indications of post-growth treatment.



© IGI 2020, International Gemological Institute

FD - 10 20



THIS DOCUMENT WAS PRODUCED WITH THE FOLLOWING SECURITY MEASURES: SPECIAL DOCUMENT PAPER, INK SCREENS, WATERMARK, BACKGROUND DESIGNS, HOLOGRAM AND OTHER SECURITY FEATURES NOT LISTED AND DO EXCEED DOCUMENT SECURITY INDUSTRY GUIDELINE

www.igi.org



December 27, 2021	
IGI Report No. LG508117373	
PRINCESS CUT	
2.50 CARATS	
24 X 17.15 X 5.14 MM	
Carat Weight	
Color Grade	FANCY INTENSE PINK
Clarity Grade	WVS 2
Depth	71.5%
Table	71%
Grain	Slightly Thick To Thick
Culet	Pointed
Polish	EXCELLENT
Symmetry	EXCELLENT
Fluorescence	SLIGHT
Inscription(s)	LABGROWN IGI LG508117373
Comments:	
	This Laboratory Grown Diamond was created by Chemical Vapor Deposition (CVD) growth process. Indicates of post-growth treatment.