



## LABORATORY GROWN DIAMOND REPORT

December 27, 2021

IGI Report Number **LG508117368**

Description	LABORATORY GROWN DIAMOND
Shape and Cutting Style	PRINCESS CUT

Measurements **7.15 X 7.01 X 4.88 MM**

## GRADING RESULTS

Carat Weight	2.10 CARATS
Color Grade	FANCY VIVID BLUE
Clarity Grade	VS 1

### ADDITIONAL GRADING INFORMATION

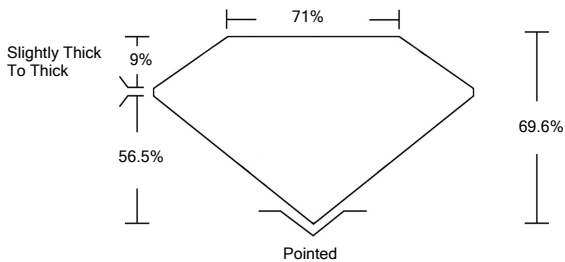
Polish	EXCELLENT
Symmetry	EXCELLENT
Fluorescence	NONE
Inscription(s)	LABGROWN IGI LG508117368

Comments: This Laboratory Grown Diamond was created by Chemical Vapor Deposition (CVD) growth process.  
Indications of post-growth treatment.

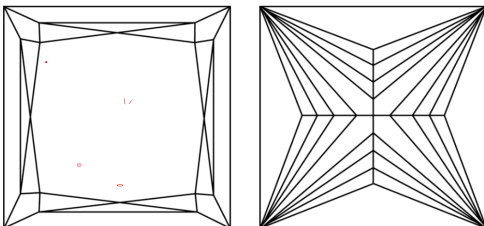
**ELECTRONIC COPY**

LG508117368

## PROPORTIONS



## CLARITY CHARACTERISTICS



## KEY TO SYMBOLS

Red symbols indicate internal characteristics.  
Green symbols indicate external characteristics.

## GRADING SCALES

COLOR GRADING SCALE	CL		NC		FT		VLT		LT	
	COLORLESS D-F		NEAR COLORLESS G-J		FAINT K-M		VERY LIGHT N-R		LIGHT S-Z	
CLARITY (10x) GRADING SCALE	FL IF		VVS		VS		SI		I	
	FLAWLESS INTERNALLY FLAWLESS		VERY VERY SLIGHTLY INCLUDED		VERY SLIGHTLY INCLUDED		SLIGHTLY INCLUDED		INCLUDED	

The laboratory grown diamond described in this Report (Report) has been graded, tested, analyzed, examined and/or inscribed by International Gemological Institute (IGI). A laboratory grown diamond is one that has essentially the same chemical, physical and optical properties as a natural diamond. IGI is an independent, not-for-profit organization (a manufactured product). IGI employs and utilizes those techniques and equipment currently available to IGI, including, without limitation, 10X magnification, corrected triplet loupe, binocular microscope, master color comparison stones, non-contact-optical spectrophotometer, and/or other instruments and/or processes as deemed appropriate by IGI. This Report includes advanced security features. A duly accredited gemologist or jeweler can advise you with respect to the importance of and interrelationship between cut, color, clarity and carat weight.

**THIS REPORT IS NEITHER A GUARANTEE, VALUATION, NOR APPRAISAL OF THE GEMSTONE DESCRIBED HEREIN. PLEASE REVIEW THE LIMITATIONS AND RESTRICTIONS SET FORTH ONLINE. FOR MORE INFORMATION, VISIT [WWW.IGI.ORG](http://WWW.IGI.ORG) OR CALL 1-888-BUY-IGI.**

© INTERNATIONAL GEMOLOGICAL INSTITUTE, INC.

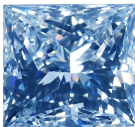


PHOTO ENLARGED

LABGROWN IGI LG508117368

**LASERSCRIBE<sup>SM</sup>**

© IGI 2020, International Gemological Institute

FD - 10 20



THIS DOCUMENT WAS PRODUCED WITH THE FOLLOWING SECURITY MEASURES: SPECIAL DOCUMENT PAPER, INK SCREENS, WATERMARK, BACKGROUND DESIGNS, HOLOGRAM AND OTHER SECURITY FEATURES NOT LISTED AND DO EXCEED DOCUMENT SECURITY INDUSTRY GUIDELINES

**www.igi.org**

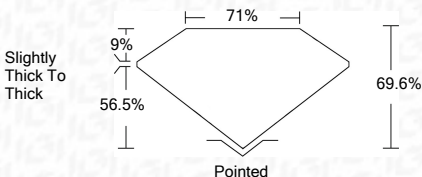
LABORATORY GROWN DIAMOND REPORT

December 27, 2021	
IGI Report Number	LG508117368
Description	LABORATORY GROWN

Shape and Cutting Style	PRINCESS CUT
Measurements	7.15 X 7.01 X 4.88 MM

## GRADING RESULTS

Carat Weight	2.10 CARATS
Color Grade	FANCY VIVID BLUE
Clarity Grade	VS 1



### ADDITIONAL GRADING INFORMATION

Polish	EXCELLENT
Symmetry	EXCELLENT
Fluorescence	NONE
Inscription(s)	LABGROWN IQ1 LG508117368

Comments: This Laboratory Grown Diamond was created by Chemical Vapor Deposition (CVD) growth process.  
Indications of post-growth treatment.



IGI

December 27, 2021	PRINCESS CUT	2.10 CARATS	VS 1	Polished	<p><b>This Laboratory Grown Diamond was created by Chemical Vapor Deposition (CVD) growth</b></p> <p><b>indications of post-growth treatment.</b></p>
IGI Report No. LG508117988	2.10 CARATS	FANCY VIVID BLUE	69.6%	EXCELLENT	
	Color Grade		71%	EXCELLENT	
	Clarity Grade		Slightly Thick To Thick	NONE	
	Depth			LARGESIDE (IGI LG508117988)	
	Carat Weight	7.15 X 7.01 X 4.88 MM			
	Table				
	Girdle				
	Culet				
	Polish				
	Symmetry				
	Fluorescence				
	Inscriptions(s)				
	Comments:				