



# INTERNATIONAL GEMOLOGICAL INSTITUTE

**ELECTRONIC COPY** LABORATORY GROWN  
DIAMOND REPORT

**LG506194321**

## IGI LABORATORY GROWN DIAMOND ID REPORT

12/09/2021

IGI Report Number **LG506194321**

### PRINCESS CUT

**5.15 X 5.07 X 3.58 MM**

Carat Weight	0.80 CARAT
Color Grade	F
Clarity Grade	VS 2
Polish	EXCELLENT
Symmetry	VERY GOOD
Fluorescence	NONE
Inscription(s)	LABGROWN IGI LG506194321

Comments: This Laboratory Grown Diamond was created by Chemical Vapor Deposition (CVD) growth process and may include post-growth treatment.  
Type IIa

## IGI LABORATORY GROWN DIAMOND ID REPORT

12/09/2021

IGI Report Number **LG506194321**

### PRINCESS CUT

**5.15 X 5.07 X 3.58 MM**

Carat Weight	0.80 CARAT
Color Grade	F
Clarity Grade	VS 2
Polish	EXCELLENT
Symmetry	VERY GOOD
Fluorescence	NONE
Inscription(s)	LABGROWN IGI LG506194321

Comments: This Laboratory Grown Diamond was created by Chemical Vapor Deposition (CVD) growth process and may include post-growth treatment.  
Type IIa

## LABORATORY GROWN DIAMOND REPORT

### IGI LABORATORY GROWN DIAMOND IDENTIFICATION REPORT

12/09/2021

IGI Report Number **LG506194321**

Shape and Cutting Style **PRINCESS CUT**

Measurements **5.15 X 5.07 X 3.58 MM**

### GRADING RESULTS

Carat Weight **0.80 CARAT**

Color Grade **F**

Clarity Grade **VS 2**

### ADDITIONAL GRADING INFORMATION

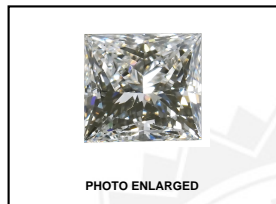
Polish **EXCELLENT**

Symmetry **VERY GOOD**

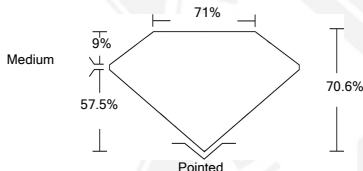
Fluorescence **NONE**

Inscription(s) **LABGROWN IGI LG506194321**

Comments: This Laboratory Grown Diamond was created by Chemical Vapor Deposition (CVD) growth process and may include post-growth treatment.  
Type IIa



**LASERSCRIBE<sup>SM</sup>**



This Laboratory Grown Diamond (LGD) described in this Report has been analyzed, graded and Laserscribed® by International Gemological Institute (IGI). A LGD has essentially the chemical, physical and optical properties as a mined diamond, with the exception of being man-made (a manufactured product). LGDs are typically produced by CVD (chemical vapor deposition) or by HPHT (high pressure high temperature) growth processes and may include post growth modifications to change the color. IGI utilizes the most advanced techniques and equipment currently available including, binocular microscopes, diamond color masters, non-contact-optical measuring device, a wide range analytical techniques including FTIR, UV-VIS-NIR, raman spectroscopy, and fluorescence analysis at various excitation wavelengths. This Report includes advanced security features. This Report is neither a guarantee, valuation nor appraisal and by making the report IGI does not agree to purchase or replace the article.

INTERNATIONAL GEMOLOGICAL INSTITUTE, INC



THIS DOCUMENT WAS PRODUCED WITH THE FOLLOWING SECURITY MEASURES: SPECIAL DOCUMENT PAPER, INK SCREENS, WATERMARK BACKGROUND DESIGN, HOLOGRAM AND OTHER SECURITY FEATURES NOT LISTED AND DO EXCEED DOCUMENT SECURITY INDUSTRY GUIDELINES.

For Terms & Conditions and to verify this report, please visit [www.igi.org](http://www.igi.org)