



**ELECTRONIC COPY**

# LABORATORY GROWN DIAMOND REPORT

# LABORATORY GROWN DIAMOND REPORT

# LG506191723

## PROPORTIONS

Diagram illustrating the proportions of a diamond-shaped gemstone:

- Width: 58.5%
- Height: 61.2%
- Depth: 42%
- Table: 14.5%
- Characteristics: Slightly Thick (Faceted), Pointed

## GRADING SCALES

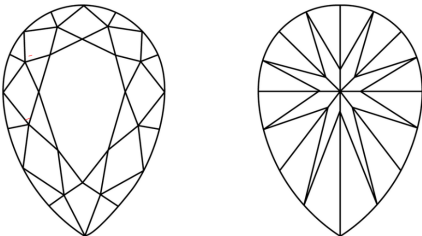
COLOR GRADING SCALE	CL	NC	FT	VLT	LT	
	COLORLESS D-F	NEAR COLORLESS G-J	FAINT K-M	VERY LIGHT N-R	LIGHT S-Z	
CLARITY (10x) GRADING SCALE	FL	IF	VVS	VS	SI	I
	FLAWLESS INTERNALLY FLAWLESS	VERY VERY SLIGHTLY INCLUDED	VERY SLIGHTLY INCLUDED	SLIGHTLY INCLUDED	INCLUDED	

The laboratory grown diamond described in this Report ("Report") has been graded, tested, analyzed, examined and/or inscribed by International Gemological Institute ("IGI") as a grown diamond. IGI's grading is based on the chemical, physical and optical properties of a mined diamond, with the exception of being grown by man (a manufactured product). IGI employs and utilizes those techniques and equipment currently available to IGI, including, without limitation, 10X magnification, corrected vision, 10X magnification, 10X magnification, 10X magnification, 10X magnification, measuring device, Diamond Sure™, Diamond View™, Spectrophotometer and such other instruments and/or processes as deemed appropriate by IGI. This Report includes advanced security features. A duly accredited gemologist or jeweler can advise you with regard to the importance of and interrelationship between cut, color, clarity and carat weight.

**THIS REPORT IS NEITHER A GUARANTEE, VALUATION, NOR APPRAISAL OF THE GEMSTONE DESCRIBED HEREIN. IGI MAKES NO REPRESENTATIONS OR RESTRICTIONS SET FORTH ONLINE. FOR MORE INFORMATION, IMPORTANT LIMITATIONS AND DISCLAIMERS, PLEASE GO TO [WWW.IGI.ORG](http://WWW.IGI.ORG) OR CALL 1-888-BUY-IGI.**

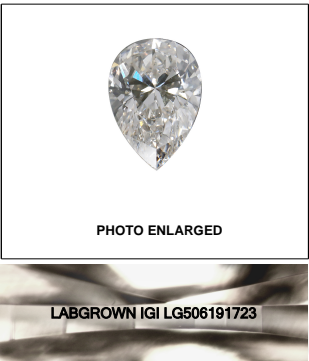
© INTERNATIONAL GEMOLOGICAL INSTITUTE, INC.

## CLARITY CHARACTERISTICS



## KEY TO SYMBOLS

Red symbols indicate internal characteristics.  
Green symbols indicate external characteristics.

**LASERSCRIBE<sup>SM</sup>**

© IGI 2020, International Gemological Institute

FD - 10 20

**www.igi.org**

Diagram illustrating the dimensions of a diamond shape:

- Top width: 58.5
- Left width: 14.5
- Left height: 42%
- Right height: 61.2
- Bottom width: 58.5

### ADDITIONAL GRADING INFORMATION

Polish	EXCELLENT
Symmetry	EXCELLENT
Fluorescence	NONE
Inscription(s)	LABGROWN IGI LG506191723

Comments: As Grown - No indication of post-growth treatment.  
This Laboratory Grown Diamond was created by High Pressure High Temperature (HPHT) growth process.  
Type II



# IGI

December 11, 2021	IGI Report No. LG506191723			
PEAR BRILLIANT	1.20 CARAT			
3.35 X 5.85 X 3.54 MM				
Carat Weight				
Color Grade	D			
Clarity Grade	VVS 2			
Depth	61.2%		Polished	
Table	58.5%		EXCELLENT	
Grain	Slightly Thick (Faceted)		EXCELLENT	
			NONE	
			LAB-GROWN (IGI)	
			LG506191723	
			Comments:	
			As Grown - No indication of post-growth treatment.	
			This Laboratory Grown Diamond was created by high pressure high temperature (HPHT) Type II process.	

**As Grown - No Indication of post-growth treatment.**  
This Laboratory Grown Diamond was created by High Pressure High Temperature (HPHT) growth process.