



ELECTRONIC COPY

LABORATORY GROWN
DIAMOND REPORT

LABORATORY GROWN DIAMOND REPORT

LABORATORY GROWN DIAMOND REPORT

December 8, 2021

IGI Report Number **LG502133627**

Description	LABORATORY GROWN DIAMOND
-------------	-----------------------------

Shape and Cutting Style **PRINCESS CUT**

Measurements 7.23 X 7.11 X 5.06 MM

GRADING RESULTS

Carat Weight 2.29 CARATS

Color Grade **G**Clarity Grade **VS 2**

ADDITIONAL GRADING INFORMATION

Polish **EXCELLENT**

Symmetry **EXCELLENT**

Fluorescence **NONE**

Inscription(s) **LABGROWN IGI LG502133627**

Comments: This Laboratory Grown Diamond was created by Chemical Vapor Deposition (CVD) growth process and may include post-growth treatment
Type IIa

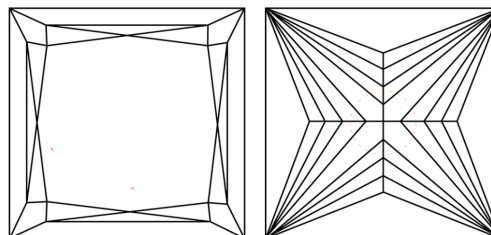
PROPORTIONS

Diagram illustrating the cross-section of a diamond-shaped component. The dimensions are given as percentages of the overall width and height:

- Top width: 68.5%
- Right height: 71.2%
- Left height: 56.5%
- Top-left corner radius: 11.5%

Labels: "Slightly Thick" (top left), "Pointed" (bottom center).

CLARITY CHARACTERISTICS

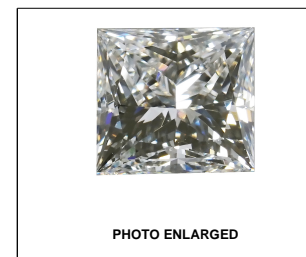


KEY TO SYMBOLS

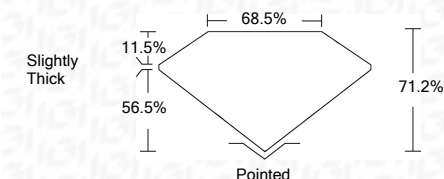
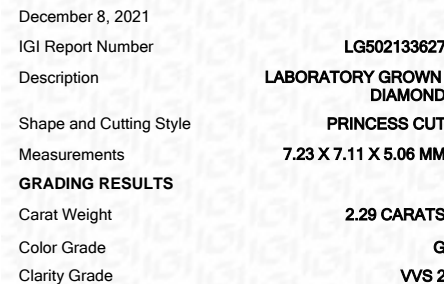
Red symbols indicate internal characteristics.
Green symbols indicate external characteristics.

GRADING SCALES

COLOR GRADING SCALE	CL		NC		FT		VLT		LT	
	COLORLESS D-F		NEAR COLORLESS G-J		FAINT K-M		VERY LIGHT N-R		LIGHT S-Z	
CLARITY (10x) GRADING SCALE	FL	IF	VVS		VS		SI		I	
	FLAWLESS INTERNALLY FLAWLESS		VERY VERY SLIGHTLY INCLUDED		VERY SLIGHTLY INCLUDED		SLIGHTLY INCLUDED		INCLUDED	



LABGROWN IGI LG502133627

LASERSCRIBESM

ADDITIONAL GRADING INFORMATION

Polish	EXCELLENT
Symmetry	EXCELLENT
Fluorescence	NONE
Inscription(s)	LABGROWN IGI LG502133627

Comments: This Laboratory Grown Diamond was created by Chemical Vapor Deposition (CVD) growth process and may include post-growth treatment
Type IIa



© IGI 2020. International Gemological Institute

FD - 10 20

www.igi.org

THIS DOCUMENT WAS PRODUCED WITH THE FOLLOWING SECURITY MEASURES: SPECIAL DOCUMENT PAPER, INK SCREENS, WATERMARK BACKGROUND DESIGNS, HOLOGRAM AND OTHER SECURITY FEATURES NOT LISTED AND DO EXCEED DOCUMENT SECURITY INDUSTRY GUIDELINES

	VWS 2	Poished	
	71.1%	EXCELLENT	
	68.5%	EXCELLENT	
Slightly Thick		NONE	
	LARGROWN IGI LG9502133827		
Comments:			
This Laboratory Grown Diamond was created by Chemical Vapor Deposition (CVD) growth process and may include post-growth treatments.			
Type IIIa			