



**ELECTRONIC COPY**

# LABORATORY GROWN DIAMOND REPORT

LABORATORY GROWN DIAMOND REPORT

## LABORATORY GROWN DIAMOND REPORT

December 7, 2021	
IGI Report Number	LG502122502
Description	LABORATORY GROWN DIAMOND
Shape and Cutting Style	CUT CORNERED RECTANGULAR MODIFIED BRILLIANT
Measurements	9.25 X 7.05 X 4.60 MM

## GRADING RESULTS

Carat Weight	2.52 CARATS
Color Grade	H
Clarity Grade	VVS 2

### ADDITIONAL GRADING INFORMATION

Polish	EXCELLENT
Symmetry	EXCELLENT
Fluorescence	NONE
Inscription(s)	LABGROWN IGI LG502122502

Comments: This Laboratory Grown Diamond was created by Chemical Vapor Deposition (CVD) growth process and may include post-growth treatment  
Type IIa

## PROPORTIONS

Medium

69%

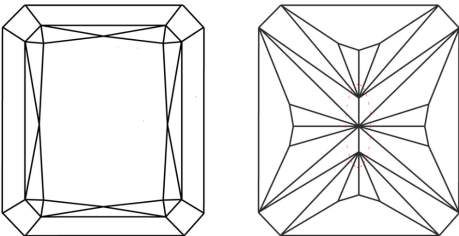
11%

51%

65.2%

Pointed

## CLARITY CHARACTERISTICS

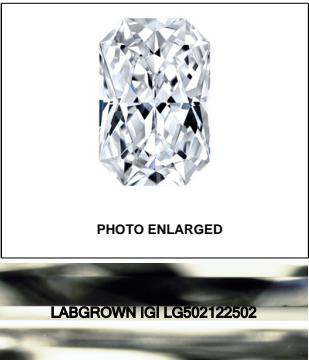
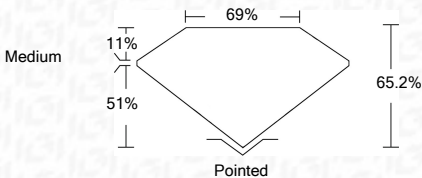
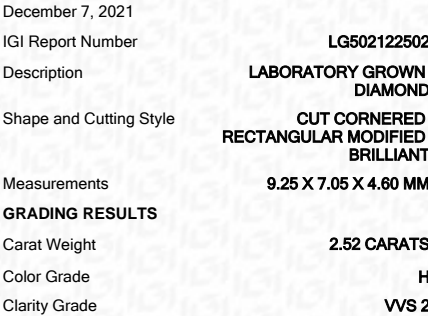


## KEY TO SYMBOLS

Red symbols indicate internal characteristics.  
Green symbols indicate external characteristics.

## GRADING SCALES

COLOR GRADING SCALE	CL		NC		FT		VLT		LT			
	COLORLESS D-F		NEAR COLORLESS G-J		FAINT K-M		VERY LIGHT N-R		LIGHT S-Z			
CLARITY (10x) GRADING SCALE	FL		IF		VVS		VS		SI		I	
	FLAWLESS INTERNALLY FLAWLESS		VERY VERY SLIGHTLY INCLUDED		VERY SLIGHTLY INCLUDED		SLIGHTLY INCLUDED		INCLUDED			

**LASERSCRIBE<sup>SM</sup>**

### ADDITIONAL GRADING INFORMATION

Polish	EXCELLENT
Symmetry	EXCELLENT
Fluorescence	NONE
Inscription(s)	LABGROWN IGI LG502122502

Comments: This Laboratory Grown Diamond was created by Chemical Vapor Deposition (CVD) growth process and may include post-growth treatment  
Type IIa



IGI

December 7, 2021	IGI Report No. LG502122502	<div> </div>	<div> <p><b>GUT CORNERED RECT. MODIFIED BRILLIANT</b></p> <p><b>2.52 CARATS</b></p> <p><b>H</b></p> <p><b>VVS 2</b></p> <p><b>66.2%</b></p> <p><b>69%</b></p> <p><b>Medium</b></p> </div>	<div> <p><b>Cut</b></p> <p><b>Polished</b></p> <p><b>EXCELLENT</b></p> <p><b>EXCELLENT</b></p> <p><b>NONE</b></p> <p><b>LARGROWN IGI</b></p> <p><b>LG502122502</b></p> </div>	<div> <p><b>Comments:</b></p> <p>This Laboratory Grown Diamond was created by Chemical Vapor Deposition (CVD) growth process and may include post-growth treatments.</p> <p><b>Type Iia</b></p> </div>
------------------	----------------------------	--------------	---	---	--

