

LABORATORY GROWN
DIAMOND REPORT

LABORATORY GROWN DIAMOND REPORT

LABORATORY GROWN DIAMOND REPORT

| | |
|-------------------------|-----------------------------|
| November 15, 2021 | |
| IGI Report Number | LG502109292 |
| Description | LABORATORY GROWN DIAMOND |
| Shape and Cutting Style | OVAL BRILLIANT |
| Measurements | 10.43 X 7.05 X 4.41 MM |

GRADING RESULTS

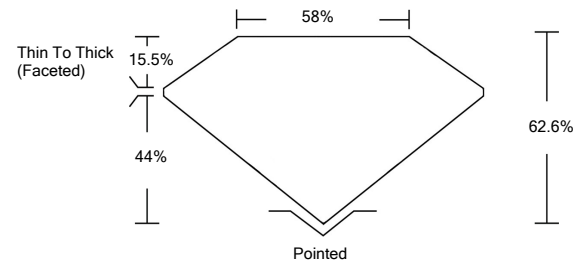
| | |
|---------------|-------------|
| Carat Weight | 2.05 CARATS |
| Color Grade | G |
| Clarity Grade | VS 2 |

ADDITIONAL GRADING INFORMATION

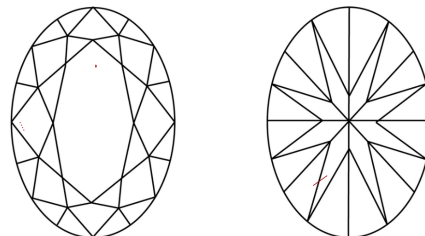
| | |
|----------------|--------------------------|
| Polish | EXCELLENT |
| Symmetry | EXCELLENT |
| Fluorescence | NONE |
| Inscription(s) | LABGROWN IGI LG502109292 |

Comments: This Laboratory Grown Diamond was created by Chemical Vapor Deposition (CVD) growth process and may include post-growth treatment.
Type IIa

PROPORTIONS



CLARITY CHARACTERISTICS



KEY TO SYMBOLS

Red symbols indicate internal characteristics.
Green symbols indicate external characteristics.

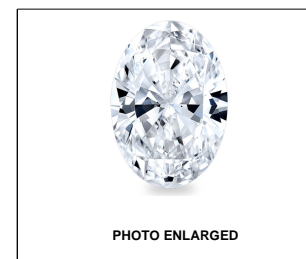
GRADING SCALES

| | | | | | | | | | | |
|-----------------------------|------------------------------|--|-----------------------------|--|------------------------|--|-------------------|--|-----------|--|
| COLOR GRADING SCALE | CL | | NC | | FT | | VLT | | LT | |
| | COLORLESS D-F | | NEAR COLORLESS G-J | | FAINT K-M | | VERY LIGHT N-R | | LIGHT S-Z | |
| CLARITY (10x) GRADING SCALE | FL IF | | VVS | | VS | | SI | | I | |
| | FLAWLESS INTERNALLY FLAWLESS | | VERY VERY SLIGHTLY INCLUDED | | VERY SLIGHTLY INCLUDED | | SLIGHTLY INCLUDED | | INCLUDED | |

The laboratory growdiamond described in this Report (Report) has been graded, tested, analyzed, examined and/or inscribed by International Gemological Institute (I.G.I.). A laboratory grown diamond is one that has essentially the same chemical, physical and optical properties as a naturally occurring diamond. The production of a grown diamond is a manufacturing process. I.G.I. employs and utilizes those techniques and equipment currently available to I.G.I., including, without limitation, 10X magnification, corrected triplet loupe, binocular microscope, master color comparison stones, non-contact optical spectrometer, and/or other instruments and/or processes as deemed appropriate by I.G.I. This Report includes advanced security features. A duly accredited gemologist or jeweler can advise you with respect to the importance of and interrelationship between cut, color, clarity and carat weight.

THIS REPORT IS NEITHER A GUARANTEE, VALUATION, NOR APPRAISAL OF THE GEMSTONE DESCRIBED HEREIN. PLEASE REVIEW THE LIMITATIONS AND RESTRICTIONS SET FORTH ONLINE. FOR MORE INFORMATION, PLEASE VISIT WWW.IGI.ORG OR CALL 1-888-BUY-IGI.

© INTERNATIONAL GEMOLOGICAL INSTITUTE, INC.



LABGROWN IGI LG502109292

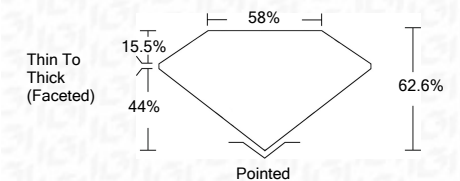
LASERSCRIBESM

© IGI 2020, International Gemological Institute

FD - 10 20

www.igi.org

| | |
|-------------------------|-----------------------------|
| November 15, 2021 | |
| IGI Report Number | LG502109292 |
| Description | LABORATORY GROWN DIAMOND |
| Shape and Cutting Style | OVAL BRILLIANT |
| Measurements | 10.43 X 7.05 X 4.41 MM |
| GRADING RESULTS | |
| Carat Weight | 2.05 CARATS |
| Color Grade | G |
| Clarity Grade | VS 2 |



ADDITIONAL GRADING INFORMATION

| | |
|----------------|--------------------------|
| Polish | EXCELLENT |
| Symmetry | EXCELLENT |
| Fluorescence | NONE |
| Inscription(s) | LABGROWN IGI LG502109292 |

Comments: This Laboratory Grown Diamond was created by Chemical Vapor Deposition (CVD) growth process and may include post-growth treatment.
Type IIa



| |
|--|
| November 15, 2021 |
| GI Report No LG862106292 |
| OVAL BRILLIANT |
| 10.0 X 7.05 X 4.41 MM |
| Gross Weight |
| Carat Grade |
| Net Weight |
| Clarity Grade |
| VS 2 |
| Depth |
| Table |
| Girdle |
| Thin To Thick (Faceted) |
| Poished |
| EXCELLENT |
| Symmetry |
| EXCELLENT |
| Fluorescence |
| NONE |
| LABGROWN K1 |
| LG862106292 |
| Comments: |
| This Laboratory Crown Diamond was created by Chemical Vapor Deposition (CVD) growth process and may include post-growth treatment. |
| Type Ia |