



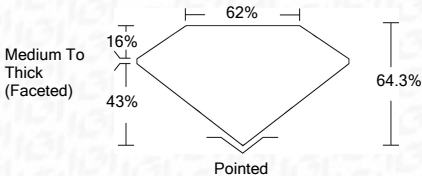
**ELECTRONIC COPY**

# LABORATORY GROWN DIAMOND REPORT

## LABORATORY GROWN DIAMOND REPORT

October 30, 2021	
IGI Report Number	LG500165662
Description	LABORATORY GROWN DIAMOND
Shape and Cutting Style	PEAR BRILLIANT
Measurements	10.73 X 6.92 X 4.45 MM

GRADING RESULTS	
Carat Weight	2.01 CARATS
Color Grade	F
Clarity Grade	VS 1



ADDITIONAL GRADING INFORMATION	
Polish	EXCELLENT
Symmetry	EXCELLENT
Fluorescence	NONE
Inscription(s)	LABGROWN IGI LG500165862

Comments: This Laboratory Grown Diamond was created by Chemical Vapor Deposition (CVD) growth process and may include post-growth treatment.  
Type IIa



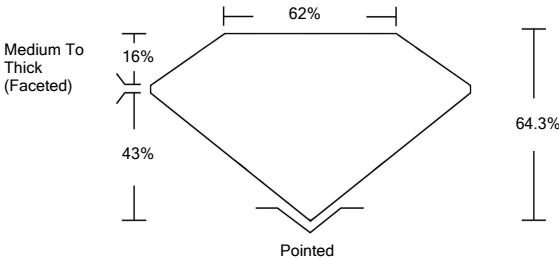
# IGI

October 30, 2021	IGI Report No. LG500165682	
PEAR BRILLIANT		
10.73 x 6.92 x 4.45 MM		
Carat Weight	2.01 CARATS	
Color Grade	F	
Clarity Grade	VS 1	
Depth	64.3%	
Table	62%	
Girdle	Medium To Thick (Faced)	
Culet	Pointed	
Polar Symmetry	EXCELLENT	
Fluorescence	EXCELLENT	
Inscriptions (if any)	NONE	
Comments:	LARGROWN IGI LGG00165682	
This Laboratory Grown Diamond was created by Chemical Vapor Deposition (CVD) growth process and may include post-growth treatments.		
Type IIa		

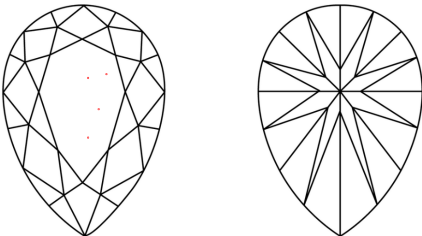
This Laboratory Grown Diamond was created by Chemical Vapor Deposition (CVD) growth process and may include post-growth treatment.

## Type IIa

## PROPORTIONS



## CLARITY CHARACTERISTICS



## KEY TO SYMBOLS

Red symbols indicate internal characteristics.  
Green symbols indicate external characteristics.

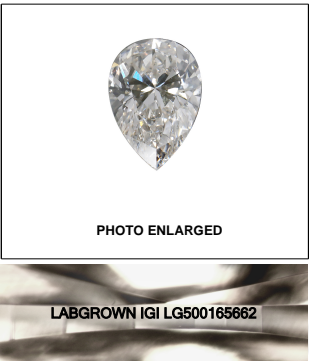
## GRADING SCALES

COLOR GRADING SCALE	CL		NC		FT		VLT		LT	
	COLORLESS D-F		NEAR COLORLESS G-J		FAINT K-M		VERY LIGHT N-R		LIGHT S-Z	
CLARITY (10x) GRADING SCALE	FL	IF	VVS		VS		SI		I	
	FLAWLESS		VERY VERY SLIGHTLY INCLUDED		VERY SLIGHTLY INCLUDED		SLIGHTLY INCLUDED		INCLUDED	

The laboratory grown diamond described in this Report ("Report") has been graded, tested, analyzed, examined and/or inscribed by International Gemological Institute ("IGI"). Laboratory grown diamonds are one of the same chemical, physical and optical properties as natural diamonds. IGI uses the same grading system (a and man) as the natural diamond industry. IGI employs and utilizes those techniques and equipment currently available to IGI, including, without limitation, 10X magnification, corrected vision, ultraviolet light, infrared spectroscopy, Raman spectroscopy, diamond measuring device, Diamond Sure™, Diamond View™, Spectrophotometer and such other instruments and/or processes as deemed appropriate by IGI. This Report includes advanced security features. A duly accredited gemologist or jeweler can advise you with regard to the importance of and interrelationship between cut, color, clarity and carat weight.

**THIS REPORT IS NEITHER A GUARANTEE, VALUATION, NOR APPRAISAL OF THE GEMSTONE DESCRIBED HEREIN. PLEASE REVIEW THE LIMITATIONS AND RESTRICTIONS SET FORTH ONLINE. FOR THE FULL DISCLOSURE OF THE LIMITATIONS AND DISCLAIMERS, PLEASE GO TO [WWW.IGI.ORG](http://WWW.IGI.ORG) OR CALL 1-888-BUY-IGI.**

© INTERNATIONAL GEMOLOGICAL INSTITUTE, INC.

**LASERSCRIBE<sup>SM</sup>**

© IGI 2020, International Gemological Institute

FD - 10 20

**www.igi.org**

THIS DOCUMENT WAS PRODUCED WITH THE FOLLOWING SECURITY MEASURES: SPECIAL DOCUMENT PAPER, INK SCREENS, WATERMARK, BACKGROUND DESIGNS, HOLOGRAM AND OTHER SECURITY FEATURES NOT LISTED AND DO EXCEED DOCUMENT SECURITY INDUSTRY GUIDELINES