



**ELECTRONIC COPY**

# LABORATORY GROWN DIAMOND REPORT

# LABORATORY GROWN DIAMOND REPORT

# LG500165538

## PROPORTIONS

Medium To Slightly Thick faceted)

15%

59%

36.4°

40.3°

42.5%

61.2%

Pointed

## GRADING SCALES

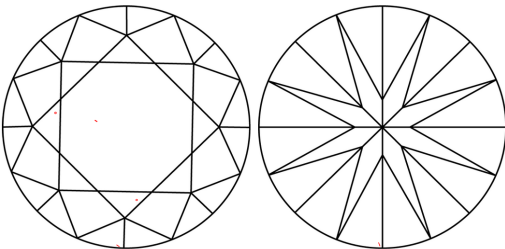
|                             |                              |                             |                        |                   |           |   |
|-----------------------------|------------------------------|-----------------------------|------------------------|-------------------|-----------|---|
| COLOR GRADING SCALE         | CL                           | NC                          | FT                     | VLT               | LT        |   |
|                             | COLORLESS D-F                | NEAR COLORLESS G-J          | FAINT K-M              | VERY LIGHT N-R    | LIGHT S-Z |   |
| CLARITY (10x) GRADING SCALE | FL                           | IF                          | VVS                    | VS                | SI        | I |
|                             | FLAWLESS INTERNALLY FLAWLESS | VERY VERY SLIGHTLY INCLUDED | VERY SLIGHTLY INCLUDED | SLIGHTLY INCLUDED | INCLUDED  |   |
|                             |                              |                             |                        |                   |           |   |

The laboratory grown diamond described in this Report (Report) has been graded, tested, analyzed, examined and/or inscribed by International Gemological Institute (IGI). IGI's laboratory grown diamond grading was initially a name chemical, physical and optical properties of the diamond, with the exception of the growth process (man (a manufactured product). IGI employs and utilizes those techniques and equipment currently available to IGI, including, without limitation, 10X magnification, corrected microscope, ultraviolet light, infrared spectrometer, Raman spectrometer, X-ray fluorescence measuring device, Diamond Sure™, Diamond View™, Spectrophotometer and such other instruments and/or processes as deemed appropriate by IGI. This Report includes additional security features. A duly accredited gemologist or jeweler can advise you with relevance the importance of and interrelationship between cut, color, clarity and carat weight.

**THIS REPORT IS NEITHER A GUARANTEE, VALUATION, NOR APPRAISAL OF THE GEMSTONE DESCRIBED HEREIN. PLEASE REVIEW THE LIMITATIONS AND RESTRICTIONS SET FORTH ONLINE FOR THIS REPORT. PLEASE VISIT [WWW.IGI.ORG](http://WWW.IGI.ORG) FOR THE LIMITATIONS AND DISCLAIMERS. PLEASE GO TO [WWW.IGI.ORG](http://WWW.IGI.ORG) OR CALL 1-888-BUY-IGI.**

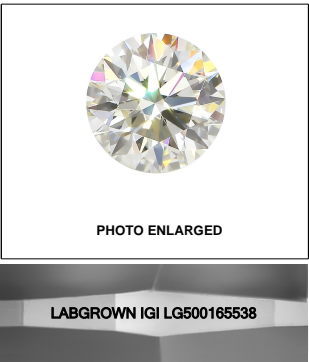
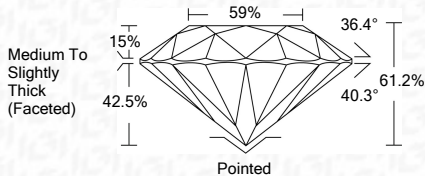
© INTERNATIONAL GEMOLOGICAL INSTITUTE, INC.

## CLARITY CHARACTERISTICS



## KEY TO SYMBOLS

Red symbols indicate internal characteristics.  
Green symbols indicate external characteristics.

**LASERSCRIBE<sup>SM</sup>**

### ADDITIONAL GRADING INFORMATION

|                |                          |
|----------------|--------------------------|
| Polish         | EXCELLENT                |
| Symmetry       | EXCELLENT                |
| Fluorescence   | NONE                     |
| Inscription(s) | LABGROWN IGI LG500165538 |

Comments: This Laboratory Grown Diamond was created by Chemical Vapor Deposition (CVD) growth process and may include post-growth treatment.  
Type IIa



# IGI

[illegible]

**Comments:**  
This Laboratory Grown Diamond was created by Chemical Vapor Deposition (CVD) growth process and may include post-growth treatment.  
Type IIa



THIS DOCUMENT WAS PRODUCED WITH THE FOLLOWING SECURITY MEASURES: SPECIAL DOCUMENT PAPER, INK SCREENS, WATERMARK, BACKGROUND DESIGNS, HOLOGRAM AND OTHER SECURITY FEATURES NOT LISTED AND DO EXCEED DOCUMENT SECURITY INDUSTRY GUIDELINES