



October 30, 2021	
IGI Report Number	LG500163393
Description	LABORATORY GROWN DIAMOND
Shape and Cutting Style	ROUND BRILLIANT
Measurements	8.42 - 8.49 X 4.71 MM

Carat Weight	2.01 CARATS
Color Grade	J
Clarity Grade	VS 1
Cut Grade	VERY GOOD

Polish	EXCELLENT
Symmetry	EXCELLENT
Fluorescence	NONE
Inscription(s)	LABGROWN IGI LG5001633933

Comments: This Laboratory Grown Diamond was created by Chemical Vapor Deposition (CVD) growth process and may include post-growth treatment.
Type IIa

LG500163393

Diagram of a faceted diamond cross-section showing dimensions:

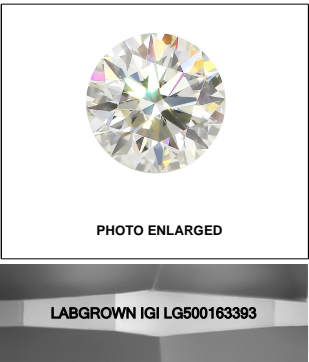
- Top width: 64.5%
- Top-left corner: 10%
- Top-right angle: 29.8°
- Left side angle: 42.5%
- Right side angle: 40.4°
- Right side height: 55.8%
- Bottom: Pointed

Red symbols indicate internal characteristics.
Green symbols indicate external characteristics.

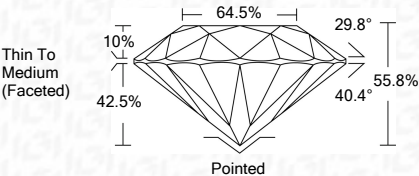
COLOR GRADING SCALE	CL	NC	FT	VLT	LT	
	COLORLESS D-F	NEAR COLORLESS G-J	FAINT K-M	VERY LIGHT N-R	LIGHT S-Z	
CLARITY (10x) GRADING SCALE	FL	IF	VVS	VS	SI	I
	FLAWLESS INTERNALLY FLAWLESS	VERY VERY SLIGHTLY INCLUDED	VERY SLIGHTLY INCLUDED	SLIGHTLY INCLUDED	INCLUDED	

The laboratory grown diamond described in this Report ("Report") has been graded, tested, analyzed, examined and/or inscribed by International Gemological Institute ("IGI"). A laboratory grown diamond is one that has essentially the same chemical, physical and optical properties as a mined diamond except it was created by a synthetic process (man-made or man-manufactured product). IGI employs and utilizes those techniques and equipment currently available to IGI, including, without limitation, 10X magnification, corrected light tube, binocular microscope, master color comparison stones, non-confocal infrared spectroscopy, Raman spectroscopy, photoluminescence, etc., and such other instruments and/or processes as deemed appropriate by IGI. This Report includes advanced security features. A duly accredited gemologist or jeweler can advise you with regard to the importance of and interrelationship between cut, color, clarity and carat weight.

THIS REPORT IS NEITHER A GUARANTEE, VALUATION, NOR APPRAISAL OF THE GEMSTONE DESCRIBED HEREIN. PLEASE REVIEW THE LIMITATIONS AND RESTRICTIONS SET FORTH ONLINE. FOR MORE INFORMATION ON OUR POLICIES, TERMS AND CONDITIONS, AND DISCLAIMERS, PLEASE GO TO WWW.IGI.ORG OR CALL 1-888-BUY-IGI.

**LASERSCRIBESM**

October 30, 2021	
IIGI Report Number	LG500163393
Description	LABORATORY GROWN DIAMOND
Shape and Cutting Style	ROUND BRILLIANT
Measurements	8.42 - 8.49 X 4.71 MM
GRADING RESULTS	
Carat Weight	2.01 CARATS
Color Grade	J
Clarity Grade	VS 1
Cut Grade	VERY GOOD



Polish	EXCELLENT
Symmetry	EXCELLENT
Fluorescence	NONE
Inscription(s)	LABGROWN IGI LG500163393

Comments: This Laboratory Grown Diamond was created by Chemical Vapor Deposition (CVD) growth process and may include post-growth treatment.
Type IIa

