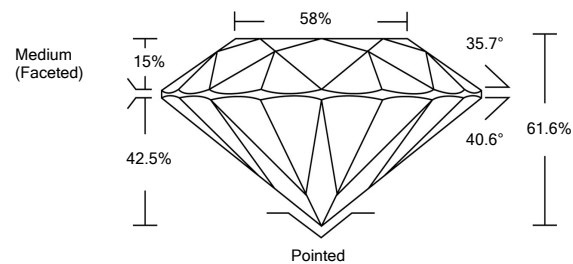




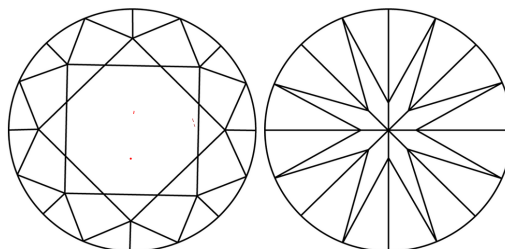
LG500151324

LABORATORY GROWN DIAMOND REPORT

PROPORTIONS



CLARITY CHARACTERISTICS



KEY TO SYMBOLS

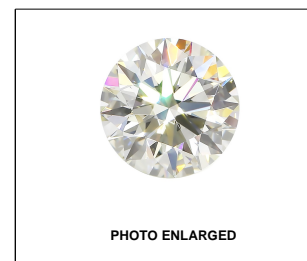
Red symbols indicate internal characteristics.
Green symbols indicate external characteristics.

GRADING SCALES

COLOR GRADING SCALE	CL	NC	FT	VL	LT	
	COLORLESS D-F	NEAR COLORLESS G-J	FAINT K-M	VERY LIGHT N-R	LIGHT S-Z	
CLARITY (10x) GRADING SCALE	FL	IF	VVS	VS	SI	I
	FLAWLESS INTERNALLY FLAWLESS	VERY VERY SLIGHTLY INCLUDED	VERY SLIGHTLY INCLUDED	SLIGHTLY INCLUDED	INCLUDED	

The laboratory grown diamond described in this Report (Report) has been graded, tested, analyzed, examined and/or inscribed by International Gemological Institute (IGI). A laboratory grown diamond is one that has essentially the same chemical, physical and optical properties as a mined diamond, with the exception of being grown by man (a manufactured product). IGI employs and utilizes those techniques and equipment currently available to IGI, including, without limitation, 10X magnification, corrected triplet loupe, binocular microscope, master color comparison stones, non-contact-optical measuring device, Diamond Sure™, Diamond View™, Spectrophotometer and such other instruments and/or processes as deemed appropriate by IGI. This Report includes advanced security features. A duly accredited gemologist or jeweler can advise you with respect to the importance of and interrelationship between cut, color, clarity and carat weight. **THIS REPORT IS NEITHER A GUARANTEE, VALUATION, NOR APPRAISAL OF THE GEMSTONE DESCRIBED HEREIN. PLEASE REVIEW THE LIMITATIONS AND RESTRICTIONS SET FORTH ONLINE. FOR ADDITIONAL INFORMATION, IMPORTANT LIMITATIONS AND DISCLAIMERS, PLEASE GO TO WWW.IGI.ORG OR CALL 1-888-BUY-IGIS.**

© INTERNATIONAL GEMOLOGICAL INSTITUTE, INC.



LABGROWN IGI LG500151324

LASERSCRIBESM

October 30, 2021

IGI Report Number

LG500151324

Description

**LABORATORY GROWN
DIAMOND**

Shape and Cutting Style

ROUND BRILLIANT

Measurements

7.40 - 7.43 X 4.57 MM

GRADING RESULTS

Carat Weight

1.56 CARAT

Color Grade

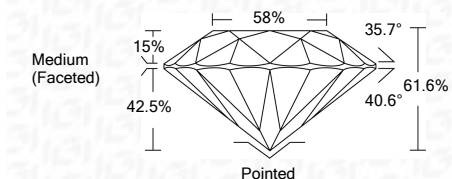
J

Clarity Grade

VVS 2

Cut Grade

IDEAL



ADDITIONAL GRADING INFORMATION

Polish

EXCELLENT

Symmetry

EXCELLENT

Fluorescence

NONE

Inscription(s)

LABGROWN IGI LG500151324

Comments: This Laboratory Grown Diamond was created by Chemical Vapor Deposition (CVD) growth process and may include post-growth treatment.
Type IIa

October 30, 2021

IGI Report Number

LG500151324

Description

**LABORATORY GROWN
DIAMOND**

Shape and Cutting Style

ROUND BRILLIANT

Measurements

7.40 - 7.43 X 4.57 MM

GRADING RESULTS

Carat Weight

1.56 CARAT

Color Grade

J

Clarity Grade

VVS 2

Cut Grade

IDEAL

ADDITIONAL GRADING INFORMATION

Polish

EXCELLENT

Symmetry

EXCELLENT

Fluorescence

NONE

Inscription(s)

LABGROWN IGI LG500151324

Comments: This Laboratory Grown Diamond was created by Chemical Vapor Deposition (CVD) growth process and may include post-growth treatment.
Type IIa



IGI

October 30, 2021	IGI Report No. LG500151324	1.56 CARAT	J	Pointed
ROUND BRILLIANT	7.40 - 7.43 X 4.57 MM	VVS 2	IDEAL	EXCELLENT
Carat Weight	Color Grade	Clarity Grade	Cut Grade	Symmetry
1.56 CARAT	J	VVS 2	IDEAL	EXCELLENT
Color Grade	Clarity Grade	Depth	Table	Grille
J	VVS 2	61.6%	58%	Medium (Faceted)
Clarity Grade	Cut Grade	Culet	Polish	Fluorescence
VVS 2	IDEAL	None	EXCELLENT	NONE
Depth	Table	Symmetry	Inscriptions(s)	Inscriptions(s)
61.6%	58%	EXCELLENT	LABGROWN IGI LG500151324	LABGROWN IGI LG500151324
Table	Grille	Inscriptions(s)	Comments:	This Laboratory Grown Diamond was created by Chemical Vapor Deposition (CVD) growth process and may include post-growth treatment. Type IIa
58%	Medium (Faceted)	LABGROWN IGI LG500151324		