



**ELECTRONIC COPY**

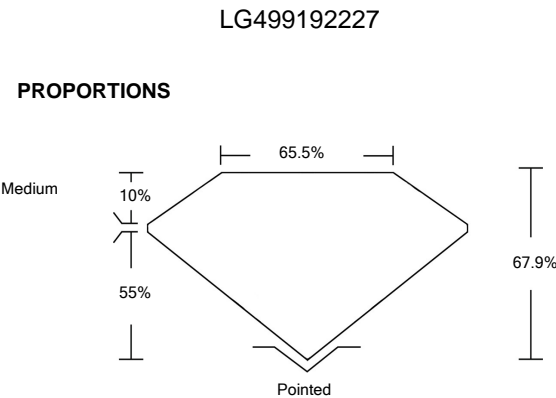
# LABORATORY GROWN DIAMOND REPORT

# LABORATORY GROWN DIAMOND REPORT

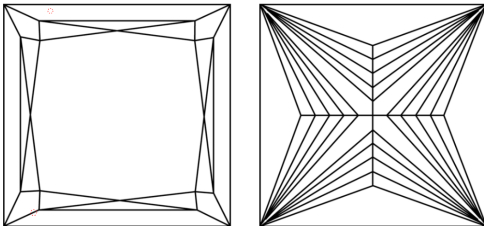
October 21, 2021	
IGI Report Number	LG499192227
Description	LABORATORY GROWN DIAMOND
Shape and Cutting Style	PRINCESS CUT
Measurements	7.92 X 7.89 X 5.36 MM
GRADING RESULTS	
Carat Weight	2.91 CARATS
Color Grade	G
Clarity Grade	VS 1

ADDITIONAL GRADING INFORMATION	
Polish	EXCELLENT
Symmetry	EXCELLENT
Fluorescence	NONE
Inscription(s)	LABGROWN IGI LG499192227

Comments: This Laboratory Grown Diamond was created by Chemical Vapor Deposition (CVD) growth process and may include post-growth treatment.  
Type IIa



## CLARITY CHARACTERISTICS



## KEY TO SYMBOLS

Red symbols indicate internal characteristics.  
Green symbols indicate external characteristics.

GRADING SCALES						
COLOR GRADING SCALE	CL		NC	FT	VLT	LT
	COLORLESS D-F		NEAR COLORLESS G-J	FAINT K-M	VERY LIGHT N-R	LIGHT S-Z
CLARITY (10x) GRADING SCALE	FL	IF	VVS	VS	SI	I
	FLAWLESS INTERNALLY FLAWLESS		VERY VERY SLIGHTLY INCLUDED	VERY SLIGHTLY INCLUDED	SLIGHTLY INCLUDED	INCLUDED

The laboratory grown diamond described in this Report (Report) has been graded, tested, analyzed, examined and/or inscribed by International Gemological Institute (I.G.I.). A laboratory grown diamond is one that has essentially the same chemical, physical and optical properties as a natural diamond. I.G.I. employs and utilizes those techniques and equipment currently available to I.G.I., including, without limitation, 10X magnification, corrected line type, binocular microscope, master color comparison stones, non-contact, computerized refractometer, spectrometer, and/or other equipment used in such other instruments and/or processes as deemed appropriate by I.G.I. This Report includes advised security features. A duly accredited gemologist or jeweler can advise you with regard to the importance of and interrelationship between cut, color, clarity and carat weight.

**THIS REPORT IS NEITHER A GUARANTEE, VALUATION, NOR APPRAISAL OF THE GEMSTONE DESCRIBED HEREIN. PLEASE REVIEW THE LIMITATIONS AND RESTRICTIONS SET FORTH ONLINE. FOR MORE INFORMATION, VISIT [WWW.IGI.ORG](http://WWW.IGI.ORG) OR CALL 1-888-BUY-IGI.**



**PHOTO ENLARGED**

LABGROWN | G | LG499192227

**LASERSCRIBE<sup>SM</sup>**

© IGI 2020, International Gemological Institute

FD - 10 20

**www.igi.org**



# IGI

October 21, 2021	PRINCESS CUT	2.91 CARATS	G	VS 1	67.9%	66.5%	Medium	Pointed	EXCELLENT	EXCELLENT	NONE	LAB-GROWN (G)	LW489182227	<p>This Laboratory Grown Diamond was created by Chemical Vapor Deposition (CVD) growth process and may include post-growth treatments.</p> <p>Type I<sub>a</sub></p>
IGI Report No. LG489182227	6.92 X 7.89 X 5.36 MM Color Grade							Cut	Polish	Symmetry	Fluorescence	Inscriptions	Comments:	