



October 19, 2021	
IGI Report Number	LG499105287
Description	LABORATORY GROWN DIAMOND
Shape and Cutting Style	ROUND BRILLIANT
Measurements	9.25 - 9.27 X 5.71 MM

Carat Weight	3.04 CARATS
Color Grade	K
Clarity Grade	SI 2
Cut Grade	IDEAL

Polish	EXCELLENT
Symmetry	EXCELLENT
Fluorescence	NONE
Inscription(s)	LABGROWN IGI LG499105287

Comments: This Laboratory Grown Diamond was created by Chemical Vapor Deposition (CVD) growth process and may include post-growth treatment.
Type IIa

LG499105287

Medium To Slightly Thick (Faceted)

56%

16%

35.8°

42%

40.1°

61.7%

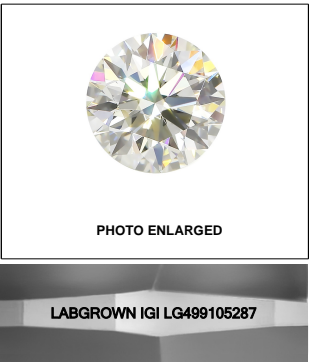
Pointed

Red symbols indicate internal characteristics.
Green symbols indicate external characteristics.

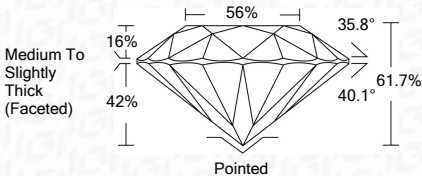
COLOR GRADING SCALE	CL	NC	FT	VLT	LT	
	COLORLESS D-F	NEAR COLORLESS G-J	FAINT K-M	VERY LIGHT N-R	LIGHT S-Z	
CLARITY (10x) GRADING SCALE	FL	IF	VVS	VS	SI	I
	FLAWLESS INTERNALLY FLAWLESS	VERY VERY SLIGHTLY INCLUDED	VERY SLIGHTLY INCLUDED	SLIGHTLY INCLUDED	INCLUDED	

The laboratory grown diamond described in this Report (Report) has been graded, tested, analyzed, examined and/or inscribed by International Gemological Institute (I.G.I.). A laboratory grown diamond is one that has essentially the same chemical, physical and optical properties as a natural diamond. I.G.I. employs and utilizes those techniques and equipment currently available to I.G.I., including, without limitation, 10X magnification, corrected line type, binocular microscope, master color comparison stones, non-contact, computerized refractometer, spectrometer, and/or other instruments and/or such other instruments and/or processes as deemed appropriate by I.G.I. This Report includes advised security features. A duly accredited gemologist or jeweler can advise you with regard to the importance of and interrelationship between cut, color, clarity and carat weight.

THIS REPORT IS NEITHER A GUARANTEE, VALUATION, NOR APPRAISAL OF THE GEMSTONE DESCRIBED HEREIN. PLEASE REVIEW THE LIMITATIONS AND RESTRICTIONS SET FORTH ONLINE. FOR MORE INFORMATION, VISIT WWW.IGI.ORG OR CALL 1-888-BUY-IGI.

**LASERSCRIBESM**

October 19, 2021	
IGI Report Number	LG499105287
Description	LABORATORY GROWN DIAMOND
Shape and Cutting Style	ROUND BRILLIANT
Measurements	9.25 - 9.27 X 5.71 MM
GRADING RESULTS	
Carat Weight	3.04 CARATST
Color Grade	K
Clarity Grade	SI 2
Cut Grade	IDEAL



Polish	EXCELLENT
Symmetry	EXCELLENT
Fluorescence	NONE
Inscription(s)	LABGROWN IGI LG499105287

Comments: This Laboratory Grown Diamond was created by Chemical Vapor Deposition (CVD) growth process and may include post-growth treatment.
Type IIa



October 19, 2021	IGI Report No. LG489163287
ROUND BRILLIANT	3.21 CARATS
9.25 - 9.27 X 5.71 MM	K
Carat Weight	SI 2
Color Grade	IDEAL
Clarity Grade	61.7%
Cut Grade	56%
Depth	Medium To Slightly Thick (average)
Table	Polished
Depth	EXCELLENT
Angle	EXCELLENT
Girdle	NONE
	LAB-GROWN IGI
	LG489163287
Comments: This Laboratory Grown Diamond was created by Chemical Vapor Deposition (CVD) growth process and may include post-growth treatments. Type Ila	