



**ELECTRONIC COPY**

# LABORATORY GROWN DIAMOND REPORT

# LABORATORY GROWN DIAMOND REPORT

|                         |                             |
|-------------------------|-----------------------------|
| October 14, 2021        |                             |
| IGI Report Number       | LG497155908                 |
| Description             | LABORATORY GROWN<br>DIAMOND |
| Shape and Cutting Style | OVAL BRILLIANT              |
| Measurements            | 9.84 X 7.01 X 4.47 MM       |

## GRADING RESULTS

|               |             |
|---------------|-------------|
| Carat Weight  | 2.01 CARATS |
| Color Grade   | J           |
| Clarity Grade | SI 1        |

### ADDITIONAL GRADING INFORMATION

|                |                          |
|----------------|--------------------------|
| Polish         | EXCELLENT                |
| Symmetry       | EXCELLENT                |
| Fluorescence   | NONE                     |
| Inscription(s) | LABGROWN IGI LG497155908 |

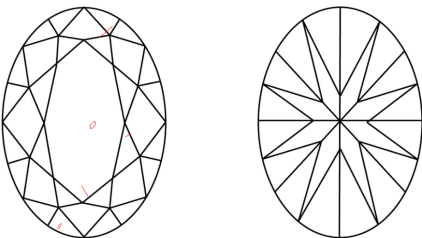
Comments: This Laboratory Grown Diamond was created by Chemical Vapor Deposition (CVD) growth process and may include post-growth treatment.  
Type IIa

## PROPORTIONS

Diagram illustrating the cross-section of a diamond-shaped structure. The dimensions are defined as follows:

- Top width: 60%
- Height: 63.8%
- Top-left corner: 16.5%
- Bottom-left corner: 43%
- Bottom tip: Pointed

## CLARITY CHARACTERISTICS



## KEY TO SYMBOLS

Red symbols indicate internal characteristics.  
Green symbols indicate external characteristics.

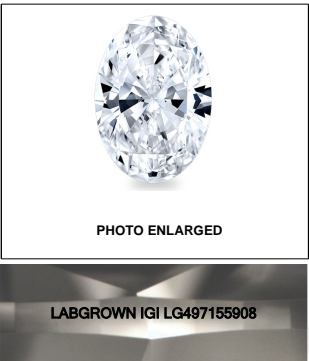
## GRADING SCALES

|                             |                              |                             |                        |                   |           |
|-----------------------------|------------------------------|-----------------------------|------------------------|-------------------|-----------|
| COLOR GRADING SCALE         | CL                           | NC                          | FT                     | VLT               | LT        |
|                             | COLORLESS D-F                | NEAR COLORLESS G-J          | FAINT K-M              | VERY LIGHT N-R    | LIGHT S-Z |
| CLARITY (10x) GRADING SCALE | FL                           | VVS                         | VS                     | SI                | I         |
|                             | FLAWLESS INTERNALLY FLAWLESS | VERY VERY SLIGHTLY INCLUDED | VERY SLIGHTLY INCLUDED | SLIGHTLY INCLUDED | INCLUDED  |

The laboratory grown diamond described in this Report ("Report") has been graded, tested, analyzed, examined and/or inscribed by International Gemological Institute ("IGI"). A laboratory grown diamond is one that has essentially the same chemical, physical and optical properties as a naturally occurring diamond except it was created by man (a manufactured product). IGI employs and utilizes those techniques and equipment currently available to IGI, including, without limitation, 10X magnification, corrected light tube, binocular microscope, master color comparison stones, non-contact infrared spectrometer, ultraviolet fluorescence examination, etc., and uses such other instruments and/or processes as deemed appropriate by IGI. This Report includes advised security features. A duly accredited gemologist or jeweler can advise you with regard to the importance of and interrelationship between cut, color, clarity and carat weight.

**THIS REPORT IS NEITHER A GUARANTEE, VALUATION, NOR APPRAISAL OF THE GEMSTONE DESCRIBED HEREIN. PLEASE REVIEW THE LIMITATIONS AND RESTRICTIONS SET FORTH ONLINE. FOR MORE INFORMATION REGARDING OUR POLICIES, CONDITIONS, TERMS AND DISCLAIMERS, PLEASE GO TO WWW.IGI.ORG OR CALL 1-888-BUY-IGI.**

© INTERNATIONAL GEMOLOGICAL INSTITUTE, INC.

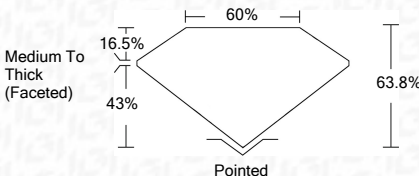
**LASERSCRIBE<sup>SM</sup>**

© IGI 2020, International Gemological Institute

FD - 10 20

**www.igi.org**

|                         |                             |
|-------------------------|-----------------------------|
| October 14, 2021        |                             |
| IGI Report Number       | LG497155908                 |
| Description             | LABORATORY GROWN<br>DIAMOND |
| Shape and Cutting Style | OVAL BRILLIANT              |
| Measurements            | 9.84 X 7.01 X 4.47 MM       |
| GRADING RESULTS         |                             |
| Carat Weight            | 2.01 CARATS                 |
| Color Grade             | J                           |
| Clarity Grade           | SI 1                        |



### ADDITIONAL GRADING INFORMATION

|                |                          |
|----------------|--------------------------|
| Polish         | EXCELLENT                |
| Symmetry       | EXCELLENT                |
| Fluorescence   | NONE                     |
| Inscription(s) | LABGROWN IGI LG497155908 |

Comments: This Laboratory Grown Diamond was created by Chemical Vapor Deposition (CVD) growth process and may include post-growth treatment.  
Type IIa



# IGI

|   |  |
|---|--|
| October 14, 2021  | IGI Report No. LG497155908   |
| <b>OVAL BRILLIANT</b><br>2.01 CARATS<br>J<br>63.8%<br>60%<br>Medium To Thick<br>(Faced)<br>Polished<br>EXCELLENT<br>EXCELLENT<br>NONE<br>LAB-GROWN IGI<br>Lower/15360 |  |
| Clarity Grade   | S11  |
| Depth   | 63.8%  |
| Table   | 60%  |
| Girdle  | Medium To Thick<br>(Faced)   |
| Culet   | Polished   |
| Polish  | EXCELLENT  |
| Symmetry  | EXCELLENT  |
| Fluorescence  | NONE   |
| Inscriptions (a)  | LAB-GROWN IGI<br>Lower/15360   |
| Comments:   | This Laboratory Grown Diamond was created by Chemical Vapor Deposition (CVD) growth process and may include post-growth treatments. Type Ila |