



**ELECTRONIC COPY**

# LABORATORY GROWN DIAMOND REPORT

# LABORATORY GROWN DIAMOND REPORT

LG497143902

## GRADING SCALES

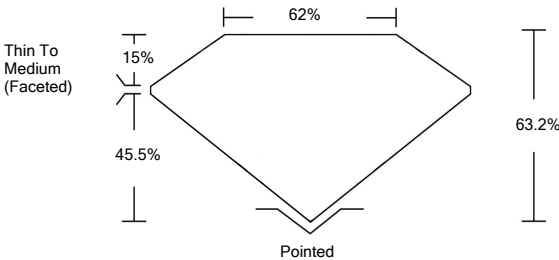
COLOR GRADING SCALE	CL	NC	FT	VLT	LT
	COLORLESS D-F	NEAR COLORLESS G-J	FAINT K-M	VERY LIGHT N-R	LIGHT S-Z
CLARITY (10x) GRADING SCALE	FL	VVS	VS	SI	I
	FLAWLESS INTERNALLY FLAWLESS	VERY VERY SLIGHTLY INCLUDED	VERY SLIGHTLY INCLUDED	SLIGHTLY INCLUDED	INCLUDED

The laboratory grown diamond described in this Report (Report) has been graded, tested, analyzed, examined and/or inscribed by International Gemological Institute (IGI). A laboratory grown diamond is one that has essentially the same chemical, physical and optical properties as a natural diamond. IGI employs and utilizes those techniques and equipment currently available to IGI, including, without limitation, 10X magnification, corrected line type, binocular microscope, master color comparison stones, non-contact, computerized refractometer, and/or other instruments used in the examination of such instruments and/or processes as deemed appropriate by IGI. This Report includes advised security features. A duly accredited gemologist or jeweler can advise you with regard to the importance of and interrelationship between cut, color, clarity and carat weight.

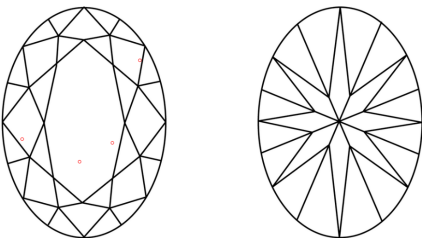
**THIS REPORT IS NEITHER A GUARANTEE, VALUATION, NOR APPRAISAL OF THE GEMSTONE DESCRIBED HEREIN. PLEASE REVIEW THE LIMITATIONS AND RESTRICTIONS SET FORTH ONLINE. FOR MORE INFORMATION, VISIT [WWW.IGI.ORG](http://WWW.IGI.ORG) OR CALL 1-888-BUY-IGI.**

© INTERNATIONAL GEMOLOGICAL INSTITUTE, INC.

## PROPORTIONS

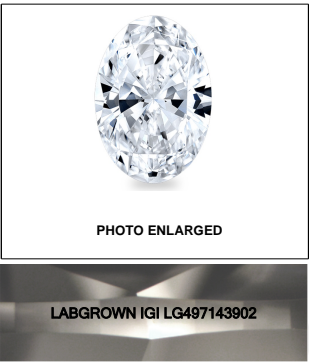


## CLARITY CHARACTERISTICS



## KEY TO SYMBOLS

Red symbols indicate internal characteristics.  
Green symbols indicate external characteristics.

**LASERSCRIBE<sup>SM</sup>**

© IGI 2020, International Gemological Institute

FD - 10 20

**www.igi.org**

October 6, 2021

IGI Report Number **LG497143902**

Description	LABORATORY GROWN DIAMOND
-------------	-----------------------------

Shape and Cutting Style **OVAL BRILLIANT**

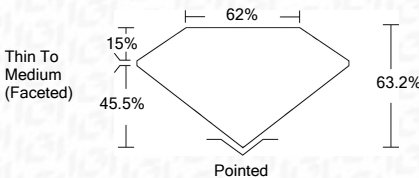
Measurements **8.30 X 5.57 X 3.52 MM**

## GRADING RESULTS

**Carat Weight** **1.02 CARAT**

Color Grade E

Clarity Grade VS 2



### ADDITIONAL GRADING INFORMATION

Polish **EXCELLENT**

**Symmetry** **EXCELLENT**

Fluorescence **NONE**

Inscription(s) **LABGROWN IGI LG497143902**

Comments: This Laboratory Grown Diamond was created by Chemical Vapor Deposition (CVD) growth process and may include post-growth treatment.  
Type IIa



IGI

OCT Report No LG497143902 OCT Date 06, 2021		OVAL BRILLIANT 6.30 X 5.57 X 3.52 MM Carat Weight Color Grade Clarity Grade Depth Table Girdle Thin To Medium (Feetted)		V8 2 63.2% 62% Pointh EXCELLENT EXCELLENT NONE LABSCROWN LG LG497143902		Culet Polish Fluorescence Inscriptions(s) Comments:		The Laboratory Growth Diamond was created by Chemical Vapor Deposition (CVD) growth process and may include post-growth treatments. Type Ia	
--	--	--	--	---	--	---	--	---	--