



LABORATORY GROWN DIAMOND REPORT

November 19, 2021

IGI Report Number **LG496127929**

Description	LABORATORY GROWN DIAMOND
Shape and Cutting Style	OVAL BRILLIANT

Measurements 10.11 X 7.31 X 4.62 MM

GRADING RESULTS

Carat Weight	2.14 CARATS
Color Grade	D
Clarity Grade	VVS 1

ADDITIONAL GRADING INFORMATION

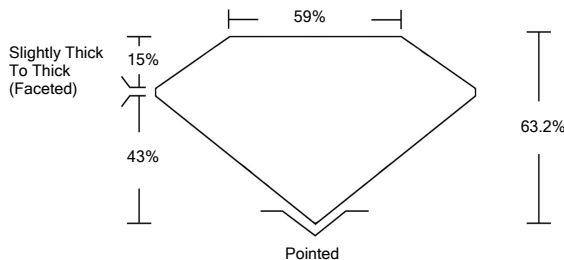
Polish	EXCELLENT
Symmetry	EXCELLENT
Fluorescence	NONE
Inscription(s)	LABGROWN IGI LG496127929

Comments: As Grown - No indication of post-growth treatment.
This Laboratory Grown Diamond was created by High Pressure High Temperature (HPHT) growth process.
Type II

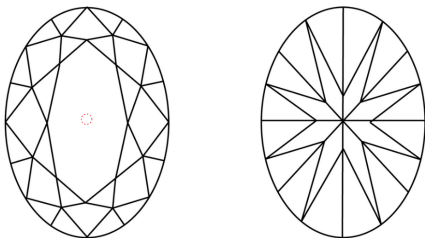
ELECTRONIC COPY

LG496127929

PROPORTIONS



CLARITY CHARACTERISTICS



KEY TO SYMBOLS

Red symbols indicate internal characteristics.
Green symbols indicate external characteristics.

LABORATORY GROWN
DIAMOND REPORT

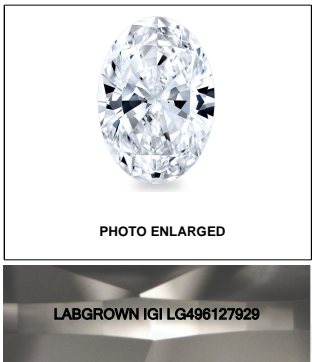
GRADING SCALES

COLOR GRADING SCALE	CL		NC		FT		VLT		LT	
	COLORLESS D-F		NEAR COLORLESS G-J		FAINT K-M		VERY LIGHT N-R		LIGHT S-Z	
CLARITY (10x) GRADING SCALE	FL	IF	VVS		VS		SI		I	
	FLAWLESS INTERNALLY FLAWLESS		VERY VERY SLIGHTLY INCLUDED		VERY SLIGHTLY INCLUDED		SLIGHTLY INCLUDED		INCLUDED	

The laboratory growth diamond described in this Report (Report) has been graded, tested, analyzed, examined and/or inscribed by International Gemological Institute (I.G.I.). A laboratory grown diamond is one that has essentially the same chemical, physical and optical properties as a natural diamond. I.G.I. employs and utilizes those techniques and equipment currently available to I.G.I., including, without limitation, 10X magnification, corrected triplet loupe, binocular microscope, master color comparison stones, non-contact-optical spectrophotometer, and/or other instruments and/or processes as deemed appropriate by I.G.I. This Report includes advanced security features. A duly accredited gemologist or jeweler can advise you with respect to the importance of and interrelationship between cut, color, clarity and carat weight.

THIS REPORT IS NEITHER A GUARANTEE, VALUATION, NOR APPRAISAL OF THE GEMSTONE DESCRIBED HEREIN. PLEASE CONSULT YOUR JEWELER FOR LIMITATIONS AND RESTRICTIONS SET FORTH ONLINE. FOR MORE INFORMATION, VISIT WWW.IGI.ORG OR CALL 1-888-BUY-IGI.

© INTERNATIONAL GEMOLOGICAL INSTITUTE, INC.

**LASERSCRIBESM**

© IGI 2020, International Gemological Institute

FD - 10 20

www.igi.org

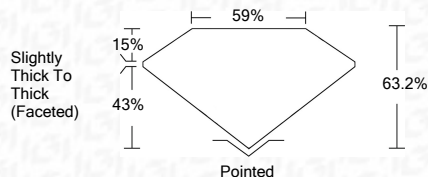
LABORATORY GROWN DIAMOND REPORT

November 19, 2021	
IGI Report Number	LG496127929
Description	LABORATORY GROWN

Shape and Cutting Style	OVAL BRILLIANT
Measurements	10.11 X 7.31 X 4.62 MM

GRADING RESULTS

Carat Weight	2.14 CARATS
Color Grade	D
Clarity Grade	VVS 1



ADDITIONAL GRADING INFORMATION

Polish	EXCELLENT
Symmetry	EXCELLENT
Fluorescence	NONE
Inscription(s)	LABGROWN IGI LG496127929

Comments: As Grown - No indication of post-growth treatment.
This Laboratory Grown Diamond was created by High Pressure High Temperature (HPHT) growth process.
Type II



November 19, 2021	IGI Report No. LG468127929	2.14 CARATS	D
<div>  </div>	<div>  </div>	<div>  </div>	<div>  </div>
<div>  </div>	<div>  </div>	<div>  </div>	<div>  </div>
<div>  </div>	<div>  </div>	<div>  </div>	<div>  </div>
<div>  </div>	<div>  </div>	<div>  </div>	<div>  </div>
<div>  </div>	<div>  </div>	<div>  </div>	<div>  </div>
<div>  </div>	<div>  </div>	<div>  </div>	<div>  </div>
<div>  </div>	<div>  </div>	<div>  </div>	<div>  </div>
<div>  </div>	<div>  </div>	<div>  </div>	<div>  </div>
<div> </div>	<div> </div>	<div> </div>	<div> </div>
<div> </div>	<div> </div>	<div> </div>	<div> </div>
<div> </div>	<div> </div>	<div> </div>	<div> </div>
<div> </div>	<div> </div>	<div> </div>	<div> </div>
<div> </div>	<div> </div>	<div> </div>	<div> </div>
<div> </div>	<div> </div>	<div> </div>	<div> </div>
<div> </div>	<div> </div>	<div> </div>	<div> </div>
<div> </div>	<div> </div>	<div> </div>	<div> </div>
<div> </div>	<div> </div>	<div> </div>	<div> </div>
<div> </div>	<div> </div>	<div> </div>	<div> </div>
<div> </div>	<div> </div>	<div> </div>	<div> </div>
<div> </div>	<div> </div>	<div> </div>	<div> </div>
<div> </div>	<div> </div>	<div> </div>	<div> </div>
<div> </div>	<div> </div>		