

LABORATORY GROWN
DIAMOND REPORT

LABORATORY GROWN DIAMOND REPORT

LABORATORY GROWN DIAMOND REPORT

September 4, 2021	
IGI Report Number	LG492134040
Description	LABORATORY GROWN DIAMOND
Shape and Cutting Style	ROUND BRILLIANT
Measurements	8.20 - 8.23 X 4.88 MM

GRADING RESULTS

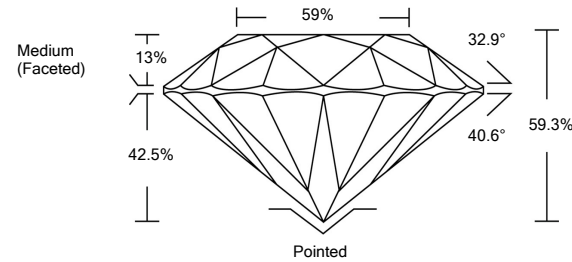
Carat Weight	2.01 CARATS
Color Grade	I
Clarity Grade	VVS 2
Cut Grade	IDEAL

ADDITIONAL GRADING INFORMATION

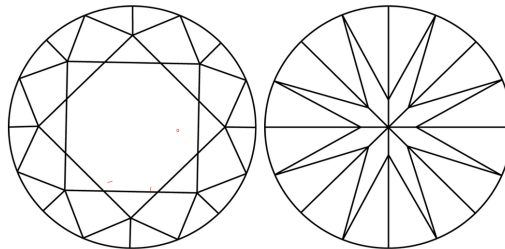
Polish	EXCELLENT
Symmetry	EXCELLENT
Fluorescence	NONE
Inscription(s)	LABGROWN IGI LG492134040

Comments: This Laboratory Grown Diamond was created by Chemical Vapor Deposition (CVD) growth process and may include post-growth treatment.
Type IIa

PROPORTIONS



CLARITY CHARACTERISTICS



KEY TO SYMBOLS

Red symbols indicate internal characteristics.
Green symbols indicate external characteristics.

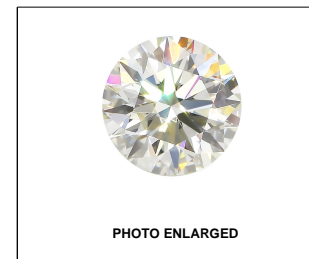
GRADING SCALES

COLOR GRADING SCALE	CL		NC		FT		VLT		LT	
	COLORLESS D-F		NEAR COLORLESS G-J		FAINT K-M		VERY LIGHT N-R		LIGHT S-Z	
CLARITY (10x) GRADING SCALE	FL IF		VVS		VS		SI		I	
	FLAWLESS INTERNALLY FLAWLESS		VERY VERY SLIGHTLY INCLUDED		SLIGHTLY INCLUDED		INCLUDED			

The laboratory growdiamond described in this Report (Report) has been graded, tested, analyzed, examined and/or inscribed by International Gemological Institute (IGI). A laboratory grown diamond is one that has essentially the same chemical, physical and optical characteristics as a natural diamond. IGI is a laboratory owned and operated by a man (a manufactured product). IGI employs and utilizes those techniques and equipment currently available to IGI, including, without limitation, 10X magnification, corrected triplet loupe, binocular microscope, master color comparison stones, non-contact-optical spectrophotometer, and/or other instruments and/or processes as deemed appropriate by IGI. This Report includes advanced security features. A duly accredited gemologist or jeweler can advise you with respect to the importance of and interrelationship between cut, color, clarity and carat weight.

THIS REPORT IS NEITHER A GUARANTEE, VALUATION, NOR APPRAISAL OF THE GEMSTONE DESCRIBED HEREIN. PLEASE REVIEW THE LIMITATIONS AND RESTRICTIONS SET FORTH ONLINE. FOR ADDITIONAL INFORMATION REGARDING THE LIMITATIONS AND DISCLAIMERS, PLEASE GO TO WWW.IGI.ORG OR CALL 1-888-BUY-IGI.

© INTERNATIONAL GEMOLOGICAL INSTITUTE, INC.



LABGROWN IGI LG492134040

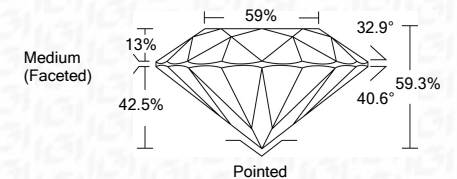
LASERSCRIBESM

© IGI 2020, International Gemological Institute

FD - 10 20

THIS DOCUMENT WAS PRODUCED WITH THE FOLLOWING SECURITY MEASURES: SPECIAL DOCUMENT PAPER, INK SCREENS, WATERMARK, BACKGROUND DESIGNS, HOLOGRAM AND OTHER SECURITY FEATURES NOT LISTED AND DO EXCEED DOCUMENT SECURITY INDUSTRY GUIDELINES

September 4, 2021	
IGI Report Number	LG492134040
Description	LABORATORY GROWN DIAMOND
Shape and Cutting Style	ROUND BRILLIANT
Measurements	8.20 - 8.23 X 4.88 MM
GRADING RESULTS	
Carat Weight	2.01 CARATS
Color Grade	I
Clarity Grade	VVS 2
Cut Grade	IDEAL



ADDITIONAL GRADING INFORMATION

Polish	EXCELLENT
Symmetry	EXCELLENT
Fluorescence	NONE
Inscription(s)	LABGROWN IGI LG492134040

Comments: This Laboratory Grown Diamond was created by Chemical Vapor Deposition (CVD) growth process and may include post-growth treatment.
Type IIa



September 4, 2021	<div> <div>  </div> <div>  </div> </div>	
IGI Report No. LG482134040	<div> <div>  </div> <div>  </div> </div>	
ROUND BRILLIANT	<div> <div>  </div> <div>  </div> </div>	
2.01 CARATS	<div> <div>  </div> <div>  </div> </div>	
2.01 CARATS	<div> <div> </div> <div> </div> </div>	
1	<div> <div> </div> <div> </div> </div>	
VVS 2	<div> <div> </div> <div> </div> </div>	
IDEAL	<div> <div> </div> <div> </div> </div>	
58.3%	<div> <div> </div> <div> </div> </div>	
59%	<div> <div> </div> <div> </div> </div>	
Medium (Faceted)	<div> <div> </div> <div> </div> </div>	
	<div> <div> </div> <div> </div> </div>	
	<div> <div> </div> <div> </div> </div>	
	<div> <div> </div> <div> </div> </div>	
	<div> <div> </div> <div> </div> </div>	
	<div> <div> </div> <div> </div> </div>	
	<div> <div> </div> <div> </div> </div>	
	<div> <div> </div> <div> </div> </div>	
	<div> <div> </div> <div> </div> </div>	
	<div> <div> </div> <div> </div> </div>	
	<div> <div> </div> <div> </div> </div>	
	<div> <div> </div> <div> </div> </div>	
	<div> <div> </div> <div> </div> </div>	
	<div> <div> </div> <div> </div> </div>	
	<div> <div> </div> <div> </div> </div>	
	<div> <div> </div> <div> </div> </div>	
	<div> <div> </div> <div> </div> </div>	
	<div> <div> </div> <div> </div> </div>	
	<div> <div> </div> <div> </div> </div>	
	<div> <div> </div> <div> </div></div>	