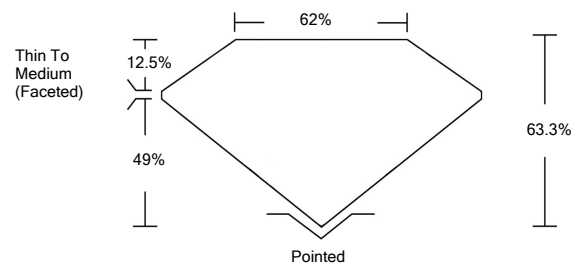




LG492109012

LABORATORY GROWN DIAMOND REPORT

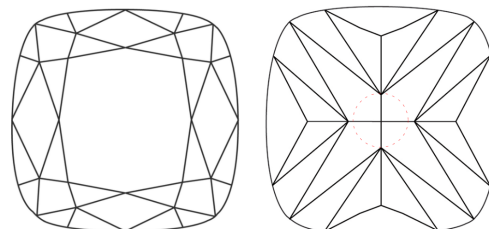
PROPORTIONS



GRADING SCALES

COLOR GRADING SCALE	CL	NC	FT	VL	LT	
	COLORLESS D-F	NEAR COLORLESS G-J	FAINT K-M	VERY LIGHT N-R	LIGHT S-Z	
CLARITY (10x) GRADING SCALE	FL	IF	VVS	VS	SI	I
	FLAWLESS INTERNALLY FLAWLESS	VERY VERY SLIGHTLY INCLUDED	VERY SLIGHTLY INCLUDED	SLIGHTLY INCLUDED	INCLUDED	

CLARITY CHARACTERISTICS



KEY TO SYMBOLS

Red symbols indicate internal characteristics.
Green symbols indicate external characteristics.

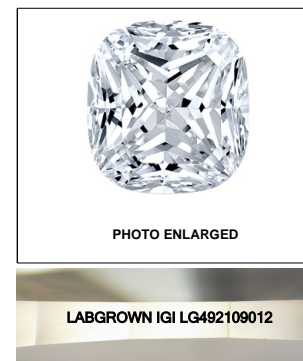


PHOTO ENLARGED

LABGROWN IGI LG492109012

LASERSCRIBESM

September 29, 2021

IGI Report Number

LG492109012

Description

**LABORATORY GROWN
DIAMOND**

Shape and Cutting Style

**SQUARE CUSHION
BRILLIANT**

Measurements

8.67 X 8.66 X 5.48 MM

GRADING RESULTS

Carat Weight

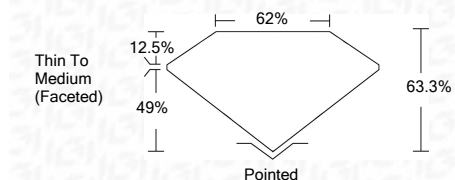
3.10 CARATS

Color Grade

F

Clarity Grade

VVS 1



ADDITIONAL GRADING INFORMATION

Polish

EXCELLENT

Symmetry

VERY GOOD

Fluorescence

NONE

Inscription(s)

LABGROWN IGI LG492109012

Comments: As Grown - No indication of post-growth treatment

This Laboratory Grown Diamond was created by Chemical Vapor Deposition (CVD) process
Type IIa



IGI

September 29, 2021	IGI Report No. LG492109012	3.10 CARATS	F
	SQUARE CUSHION BRILLIANT		
	8.67 X 8.66 X 5.48 MM		
	Carat Weight		
	Color Grade		
	Clarity Grade		
	Depth	63.3%	
	Table	62%	
	Grille	Thin To Medium (Faceted)	
	Culet	Pointed	
	Polish	EXCELLENT	
	Symmetry	VERY GOOD	
	Fluorescence	NONE	
	Inscription(s)	LABGROWN IGI LG492109012	
	Comments:		
	As Grown - No indication of post-growth treatment This Laboratory Grown Diamond was created by Chemical Vapor Deposition (CVD) process Type IIa		

