



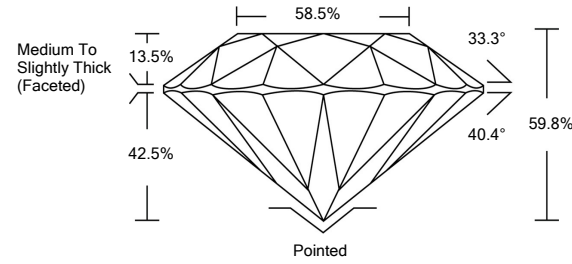
LABORATORY GROWN DIAMOND REPORT

LG490193309

GRADING SCALES

Table with 5 columns for Color Grading Scale (CL, NC, FT, VLT, LT) and Clarity (10x) Grading Scale (FL, IF, VVS, VS, SI, I). Includes descriptions like 'COLORLESS D-F', 'NEAR COLORLESS G-J', etc.

PROPORTIONS



The laboratory grown diamond described in this Report (Report) has been graded, tested, analyzed, examined and/or inscribed by International Gemological Institute (IGI). A laboratory grown diamond is one that has essentially the same chemical, physical and optical properties as a mined diamond...

© INTERNATIONAL GEMOLOGICAL INSTITUTE, INC.

08/27/2021

IGI Report Number LG490193309

Shape and Cutting Style ROUND BRILLIANT

Measurements 9.33 - 9.37 x 5.59 mm

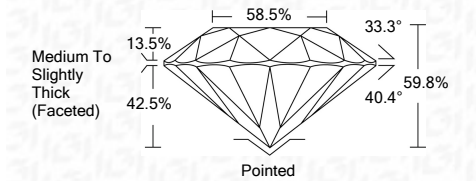
GRADING RESULTS

Carat Weight 3.00 CARATS

Color Grade J

Clarity Grade SI 2

Cut Grade IDEAL



ADDITIONAL GRADING INFORMATION

Polish EXCELLENT

Symmetry EXCELLENT

Fluorescence NONE

Inscription(s) LABGROWN IGI LG490193309

Comments: This Laboratory Grown Diamond was created by Chemical Vapor Deposition (CVD) growth process and may include post-growth treatment. Type IIa

08/27/2021

IGI Report Number LG490193309

Shape and Cutting Style ROUND BRILLIANT

Measurements 9.33 - 9.37 x 5.59 mm

GRADING RESULTS

Carat Weight 3.00 CARATS

Color Grade J

Clarity Grade SI 2

Cut Grade IDEAL

ADDITIONAL GRADING INFORMATION

Polish EXCELLENT

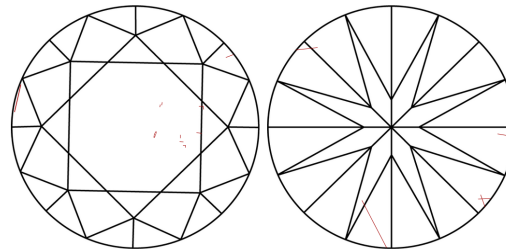
Symmetry EXCELLENT

Fluorescence NONE

Inscription(s) LABGROWN IGI LG490193309

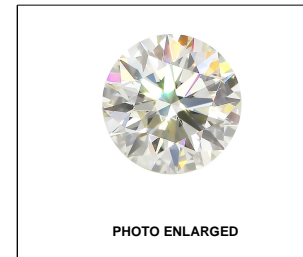
Comments: This Laboratory Grown Diamond was created by Chemical Vapor Deposition (CVD) growth process and may include post-growth treatment. Type IIa

CLARITY CHARACTERISTICS



KEY TO SYMBOLS

Red symbols indicate internal characteristics. Green symbols indicate external characteristics.



LABGROWN IGI LG490193309

LASERSCRIBESM



IGI

Summary table of report details: IGI Report No. LG490193309, ROUND BRILLIANT, 9.33 - 9.37 x 5.59 mm, 3.00 CARATS, J, SI 2, IDEAL, 59.8%, 58.5%, Medium To Slightly Thick (Faceted), Pointed, EXCELLENT, EXCELLENT, NONE, LABGROWN IGI LG490193309.