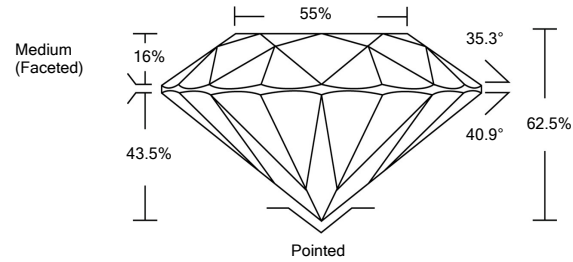




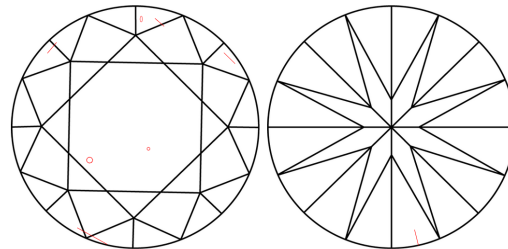
LABORATORY GROWN DIAMOND REPORT

LG490176181

PROPORTIONS



CLARITY CHARACTERISTICS



KEY TO SYMBOLS

Red symbols indicate internal characteristics.
Green symbols indicate external characteristics.

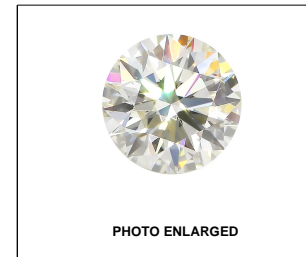
GRADING SCALES

COLOR GRADING SCALE	CL	NC	FT	VL	LT	
COLORLESS D-F		NEAR COLORLESS G-J	FAINT K-M	VERY LIGHT N-R	LIGHT S-Z	
CLARITY (10x) GRADING SCALE	FL	IF	VVS	VS	SI	I
FLAWLESS INTERNALLY FLAWLESS		VERY VERY SLIGHTLY INCLUDED	VERY SLIGHTLY INCLUDED	SLIGHTLY INCLUDED	INCLUDED	

The laboratory grown diamond described in this Report (Report) has been graded, tested, analyzed, examined and/or inscribed by International Gemological Institute (IGI). A laboratory grown diamond is one that has essentially the same chemical, physical and optical properties as a mined diamond, with the exception of being grown by man (a manufactured product). IGI employs and utilizes those techniques and equipment currently available to IGI, including, without limitation, 10X magnification, corrected triplet loupe, binocular microscope, master color comparison stones, non-contact-optical measuring device, Diamond Sure™, Diamond View™, Spectrophotometer and such other instruments and/or processes as deemed appropriate by IGI. This Report includes advanced security features. A duly accredited gemologist or jeweler can advise you with respect to the importance of and interrelationship between cut, color, clarity and carat weight.

THIS REPORT IS NEITHER A GUARANTEE, VALUATION, NOR APPRAISAL OF THE GEMSTONE DESCRIBED HEREIN. PLEASE REVIEW THE LIMITATIONS AND RESTRICTIONS SET FORTH ONLINE. FOR ADDITIONAL INFORMATION, IMPORTANT LIMITATIONS AND DISCLAIMERS, PLEASE GO TO WWW.IGI.ORG OR CALL 1-888-BUY-IGIS.

© INTERNATIONAL GEMOLOGICAL INSTITUTE, INC.



LABGROWN IGI LG490176181

LASERSCRIBESM

08/23/2021

IGI Report Number **LG490176181**

Shape and Cutting Style **ROUND BRILLIANT**

Measurements **7.58 - 7.60 x 4.74 mm**

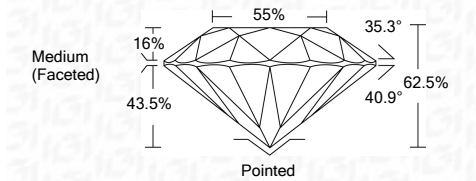
GRADING RESULTS

Carat Weight **1.67 CARAT**

Color Grade **J**

Clarity Grade **SI 1**

Cut Grade **IDEAL**



ADDITIONAL GRADING INFORMATION

Polish **EXCELLENT**

Symmetry **EXCELLENT**

Fluorescence **NONE**

Inscription(s) **LABGROWN IGI LG490176181**

Comments: This Laboratory Grown Diamond was created by Chemical Vapor Deposition (CVD) growth process and may include post-growth treatment.
Type IIa



IGI

IGI Report No. LG490176181	1.67 CARAT	J	Pointed
ROUND BRILLIANT	SI 1	EXCELLENT	EXCELLENT
7.58 - 7.60 x 4.74 mm	IDEAL	EXCELLENT	EXCELLENT
Carat Weight	62.5%	EXCELLENT	EXCELLENT
Color Grade	55%	EXCELLENT	EXCELLENT
Clarity Grade	Medium (Faceted)	EXCELLENT	EXCELLENT
Cut Grade	Pointed	EXCELLENT	EXCELLENT
Depth	EXCELLENT	EXCELLENT	EXCELLENT
Table	EXCELLENT	EXCELLENT	EXCELLENT
Grille	EXCELLENT	EXCELLENT	EXCELLENT
Culet	EXCELLENT	EXCELLENT	EXCELLENT
Polish	EXCELLENT	EXCELLENT	EXCELLENT
Symmetry	EXCELLENT	EXCELLENT	EXCELLENT
Fluorescence	EXCELLENT	EXCELLENT	EXCELLENT
Inscription(s)	EXCELLENT	EXCELLENT	EXCELLENT
Comments:	EXCELLENT	EXCELLENT	EXCELLENT