



ELECTRONIC COPY

LABORATORY GROWN
DIAMOND REPORT

LABORATORY GROWN DIAMOND REPORT

LABORATORY GROWN DIAMOND REPORT

Comments: This Laboratory Grown Diamond was created by Chemical Vapor Deposition (CVD) growth process and may include post-growth treatment.
Type IIa

LG488143413

PROPORTIONS

A technical drawing of a diamond-shaped object, likely a piece of jewelry or a decorative element. The drawing shows the object's proportions with dimension lines and percentages. The top width is 71.5%, the bottom width is 56.5%, and the height is 72.7%. The left side is labeled 'Slightly Thick' and has a dimension line indicating a thickness of 12%. The bottom point is labeled 'Pointed'.

Slightly Thick

12%

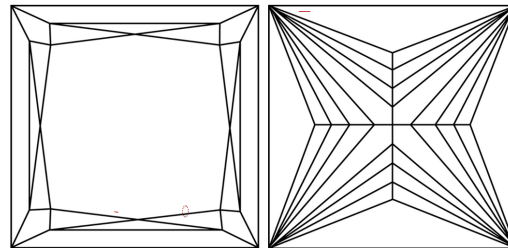
71.5%

56.5%

72.7%

Pointed

CLARITY CHARACTERISTICS



KEY TO SYMBOLS

Red symbols indicate internal characteristics.
Green symbols indicate external characteristics.

GRADING SCALES

COLOR GRADING SCALE	CL		NC		FT		VLT		LT	
	COLORLESS D-F		NEAR COLORLESS G-J		FAINT K-M		VERY LIGHT N-R		LIGHT S-Z	
CLARITY (10x) GRADING SCALE	FL IF		VVS		VS		SI		I	
	FLAWLESS INTERNALLY FLAWLESS		VERY VERY SLIGHTLY INCLUDED		VERY SLIGHTLY INCLUDED		SLIGHTLY INCLUDED		INCLUDED	

The laboratory grown diamond described in this Report ("Report") has been graded, tested, analyzed, examined and/or inscribed by International Gemological Institute (IGI). A laboratory grown diamond is one that has essentially the same chemical, physical and optical properties as a natural diamond. IGI is a gemological laboratory owned by a man (a manufactured product). IGI employs and utilizes those techniques and equipment currently available to IGI, including, without limitation, 10X magnification, corrected triplet loupe, binocular microscope, master color comparison stones, non-contact-optical surface and depth detection, and other instruments and/or processes as deemed appropriate by IGI. This Report includes advanced security features. A duly accredited gemologist or jeweler can advise you with respect to the importance of and interrelationship between cut, color, clarity and carat weight.

THIS REPORT IS NEITHER A GUARANTEE, VALUATION, NOR APPRAISAL OF THE GEMSTONE DESCRIBED HEREIN. PLEASE REVIEW THE LIMITATIONS AND RESTRICTIONS SET FORTH ONLINE. FOR MORE INFORMATION, VISIT WWW.IGI.ORG OR CALL 1-888-BUY-IGI.

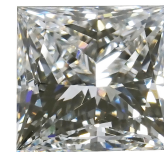


PHOTO ENLARGED

LABGROWN IGI LG488143413

LASERSCRIBESM

© IGI 2020, International Gemological Institute

FD - 10 20



THIS DOCUMENT WAS PRODUCED WITH THE FOLLOWING SECURITY MEASURES: SPECIAL DOCUMENT PAPER, INK SCREENS, WATERMARK, BACKGROUND DESIGNS, HOLOGRAM AND OTHER SECURITY FEATURES NOT LISTED AND DO EXCEED DOCUMENT SECURITY INDUSTRY GUIDELINES

Diagram illustrating the cross-section of a diamond-shaped structure, showing dimensions and labels:

- Left vertical dimension: 12%
- Top horizontal dimension: 71.5%
- Left vertical dimension (lower): 56.5%
- Right vertical dimension: 72.7%
- Bottom label: Pointed
- Text on the left: Slightly Thick

ADDITIONAL GRADING INFORMATION

Polish **EXCELLENT**

Symmetry **EXCELLENT**

Fluorescence **NONE**

Inscription(s) **LABGROWN IGI LG488143413**

Comments: This Laboratory Grown Diamond was created by Chemical Vapor Deposition (CVD) growth process and may include post-growth treatment.
Type IIa



IGI

08/1/2021	IGI Report No. LG488143413	3.01 CARATS	VS 2	72.7%	71.5%	Slightly Thick	Pointed	Culet	Fluorescence	Symmetry	Inscriptions(s)	LARGROWN IGI LG488143413	<p>This Laboratory's Growth Patterned use created by Chemical Vapor Deposition (CVD) growth process and may include post-growth treatment.</p> <p>Type IIIa</p>
PRINCESS CUT	Carat Weight 3.01 mm Length 1.90 mm Width 1.66 mm Depth 6.57 mm Color Grade K Clarity Grade VS 2 Table 71.5% G-Grade Slightly Thick	Excellent	Excellent	None	LARGROWN IGI LG488143413	<p>Culet</p> <p>Polish</p> <p>Symmetry</p> <p>Fluorescence</p> <p>Inscriptions(s)</p> <p>Comments:</p>							