



08/07/2021	
IGI Report Number	LG488130511
Shape and Cutting Style	OVAL BRILLIANT
Measurements	9.71 x 6.71 x 4.07 mm
GRADING RESULTS	
Carat Weight	1.70 CARAT
Color Grade	J
Clarity Grade	VS 2
ADDITIONAL GRADING INFORMATION	
Polish	EXCELLENT
Symmetry	EXCELLENT
Fluorescence	NONE
Inscription(s)	LABGROWN IGI LG488130511

LG488130511

Diagram illustrating the cross-section of a diamond-shaped structure. The dimensions are defined as follows:

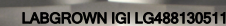
- Top width: 58%
- Top thickness: 14%
- Bottom thickness: 43%
- Overall height: 60.7%
- Bottom tip: Pointed

Red symbols indicate internal characteristics.
Green symbols indicate external characteristics.

LABORATORY GROWN DIAMOND REPORT

COLOR GRADING SCALE	CL		NC		FT		VLT		LT	
	COLORLESS D-F		NEAR COLORLESS G-J		FAINT K-M		VERY LIGHT N-R		LIGHT S-Z	
CLARITY (10x) GRADING SCALE	FL IF		VVS		VS		SI		I	
	FLAWLESS INTERNALLY FLAWLESS		VERY VERY SLIGHTLY INCLUDED		VERY SLIGHTLY INCLUDED		SLIGHTLY INCLUDED		INCLUDED	

© INTERNATIONAL GEMOLOGICAL INSTITUTE, INC.

LASERSCRIBESM

FD - 10 20

08/07/2021
IGI Report No.

Clarity Grade **VS 2**



IGI

08/07/2021	IGI Report No. LG488130611	1.00 CARAT	VS 2	Polished
0.00	0.00	0.00	60.7%	EXCELLENT
0.00	0.00	0.00	58%	EXCELLENT
0.00	0.00	0.00	Medium To Thick (Faceted)	NONE
0.00	0.00	0.00		LARGROWN (IGI)
0.00	0.00	0.00		LG488130611
0.00	0.00	0.00		Comments

This Laboratory Grown Diamond was created by Chemical Vapor Deposition (CVD) growth process and may include post-growth treatment.

www.igi.org