



LABORATORY GROWN DIAMOND REPORT

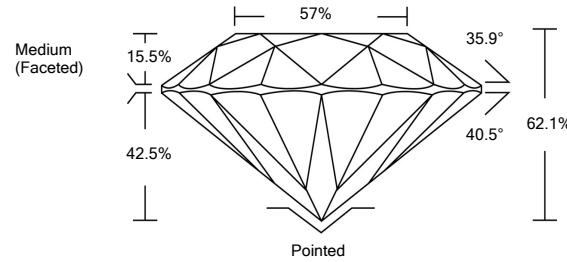
LG487174457

GRADING SCALES

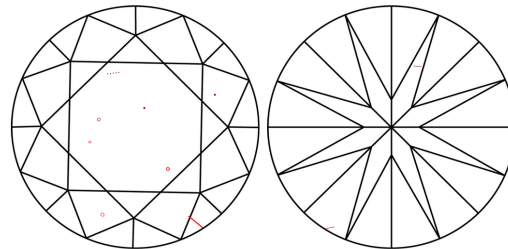
Table with 5 columns for Color Grading Scale (CL, NC, FT, VLT, LT) and Clarity (10x) Grading Scale (FL, IF, VVS, VS, SI, I).

The laboratory grown diamond described in this Report (Report) has been graded, tested, analyzed, examined and/or inscribed by International Gemological Institute (IGI). A laboratory grown diamond is one that has essentially the same chemical, physical and optical properties as a mined diamond...

PROPORTIONS

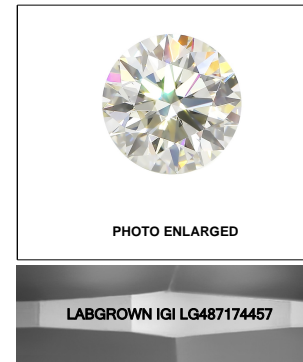


CLARITY CHARACTERISTICS

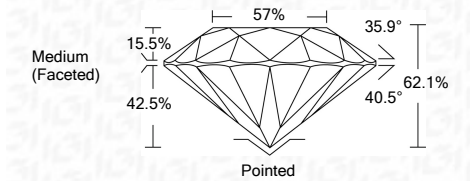


KEY TO SYMBOLS

Red symbols indicate internal characteristics. Green symbols indicate external characteristics.



07/22/2021 IGI Report Number LG487174457 Shape and Cutting Style ROUND BRILLIANT Measurements 7.30 - 7.32 x 4.54 mm GRADING RESULTS Carat Weight 1.50 CARAT Color Grade F Clarity Grade SI 1 Cut Grade IDEAL



ADDITIONAL GRADING INFORMATION Polish EXCELLENT Symmetry EXCELLENT Fluorescence NONE Inscription(s) LABGROWN IGI LG487174457

Comments: This Laboratory Grown Diamond was created by Chemical Vapor Deposition (CVD) growth process and may include post-growth treatment. Type IIa

07/22/2021 IGI Report Number LG487174457 Shape and Cutting Style ROUND BRILLIANT Measurements 7.30 - 7.32 x 4.54 mm

GRADING RESULTS Carat Weight 1.50 CARAT Color Grade F Clarity Grade SI 1 Cut Grade IDEAL

ADDITIONAL GRADING INFORMATION Polish EXCELLENT Symmetry EXCELLENT Fluorescence NONE Inscription(s) LABGROWN IGI LG487174457

Comments: This Laboratory Grown Diamond was created by Chemical Vapor Deposition (CVD) growth process and may include post-growth treatment. Type IIa



IGI

07/22/2021 IGI Report No. LG487174457 ROUND BRILLIANT 7.30 - 7.32 x 4.54 mm 1.50 CARAT F SI 1 IDEAL 62.1% 57% Medium (Faceted) Pointed EXCELLENT EXCELLENT NONE LABGROWN IGI LG487174457