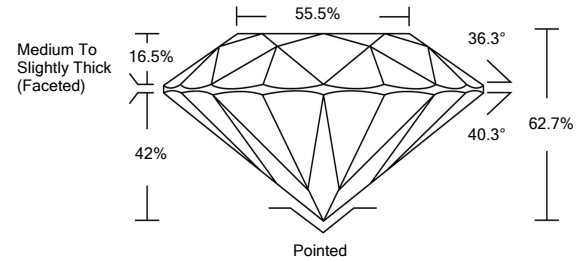




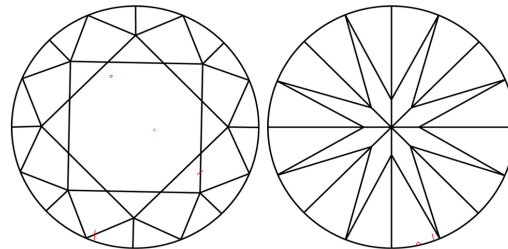
LG487172947

**LABORATORY GROWN DIAMOND REPORT**

**PROPORTIONS**



**CLARITY CHARACTERISTICS**



**KEY TO SYMBOLS**

Red symbols indicate internal characteristics.  
Green symbols indicate external characteristics.

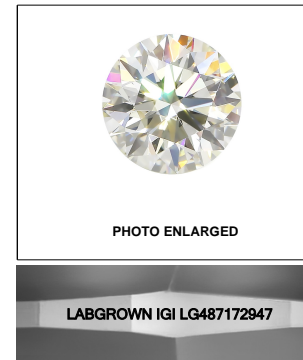
**GRADING SCALES**

COLOR GRADING SCALE	CL	NC	FT	VL	LT	
	COLORLESS D-F	NEAR COLORLESS G-J	FAINT K-M	VERY LIGHT N-R	LIGHT S-Z	
CLARITY (10x) GRADING SCALE	FL	IF	VVS	VS	SI	I
	FLAWLESS INTERNALLY FLAWLESS	VERY VERY SLIGHTLY INCLUDED	VERY SLIGHTLY INCLUDED	SLIGHTLY INCLUDED	INCLUDED	

The laboratory grown diamond described in this Report (Report) has been graded, tested, analyzed, examined and/or inscribed by International Gemological Institute (IGI). A laboratory grown diamond is one that has essentially the same chemical, physical and optical properties as a mined diamond, with the exception of being grown by man (a manufactured product). IGI employs and utilizes those techniques and equipment currently available to IGI, including, without limitation, 10X magnification, corrected triplet loupe, binocular microscope, master color comparison stones, non-contact-optical measuring device, Diamond Sure™, Diamond View™, Spectrophotometer and such other instruments and/or processes as deemed appropriate by IGI. This Report includes advanced security features. A duly accredited gemologist or jeweler can advise you with respect to the importance of and interrelationship between cut, color, clarity and carat weight.

**THIS REPORT IS NEITHER A GUARANTEE, VALUATION, NOR APPRAISAL OF THE GEMSTONE DESCRIBED HEREIN. PLEASE REVIEW THE LIMITATIONS AND RESTRICTIONS SET FORTH ONLINE. FOR ADDITIONAL INFORMATION, IMPORTANT LIMITATIONS AND DISCLAIMERS, PLEASE GO TO WWW.IGI.ORG OR CALL 1-888-BUY-IGIS.**

© INTERNATIONAL GEMOLOGICAL INSTITUTE, INC.



**LASERSCRIBE<sup>SM</sup>**

07/17/2021

IGI Report Number **LG487172947**

Shape and Cutting Style **ROUND BRILLIANT**

Measurements **8.40 - 8.44 x 5.28 mm**

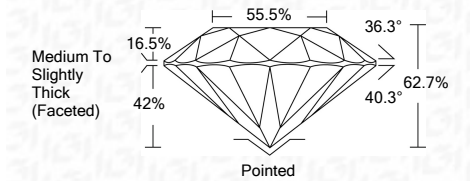
**GRADING RESULTS**

Carat Weight **2.33 CARATS**

Color Grade **J**

Clarity Grade **VS 1**

Cut Grade **EXCELLENT**



**ADDITIONAL GRADING INFORMATION**

Polish **EXCELLENT**

Symmetry **EXCELLENT**

Fluorescence **NONE**

Inscription(s) **LABGROWN IGI LG487172947**

Comments: This Laboratory Grown Diamond was created by Chemical Vapor Deposition (CVD) growth process and may include post-growth treatment.  
Type IIa



**IGI**

IGI Report No. LG487172947	2.33 CARATS	J	Pointed
ROUND BRILLIANT	EXCELLENT	VS 1	EXCELLENT
8.40 - 8.44 x 5.28 mm	62.7%	42%	EXCELLENT
Carat Weight	55.5%	16.5%	EXCELLENT
Color Grade	Medium To Slightly Thick (Faceted)	40.3°	EXCELLENT
Clarity Grade	None	36.3°	EXCELLENT
Cut Grade	LABGROWN IGI LG487172947	55.5%	EXCELLENT
Depth	None	62.7%	EXCELLENT
Table	None	42%	EXCELLENT
Grade	None	16.5%	EXCELLENT
Culet	None	36.3°	EXCELLENT
Polish	None	40.3°	EXCELLENT
Symmetry	None	55.5%	EXCELLENT
Fluorescence	None	62.7%	EXCELLENT
Inscription(s)	None	42%	EXCELLENT
Comments:	None	16.5%	EXCELLENT

