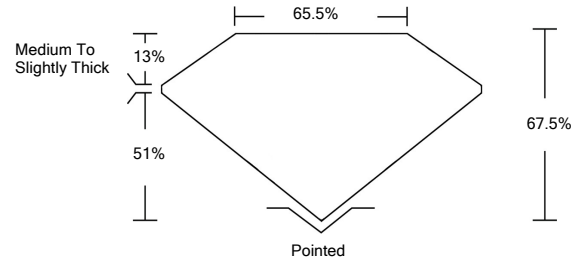




LG487108318

LABORATORY GROWN DIAMOND REPORT

PROPORTIONS



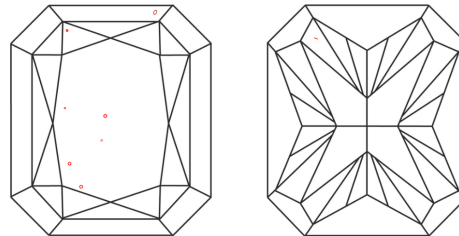
GRADING SCALES

Table with 5 columns for Color Grading Scale (CL, NC, FT, VLT, LT) and Clarity (10x) Grading Scale (FL, IF, VVS, VS, SI, I).

The laboratory grown diamond described in this Report (Report) has been graded, tested, analyzed, examined and/or inscribed by International Gemological Institute (IGI). A laboratory grown diamond is one that has essentially the same chemical, physical and optical properties as a mined diamond...

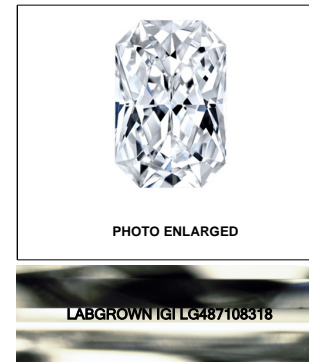
© INTERNATIONAL GEMOLOGICAL INSTITUTE, INC.

CLARITY CHARACTERISTICS



KEY TO SYMBOLS

Red symbols indicate internal characteristics. Green symbols indicate external characteristics.



LASERSCRIBE<sup>SM</sup>

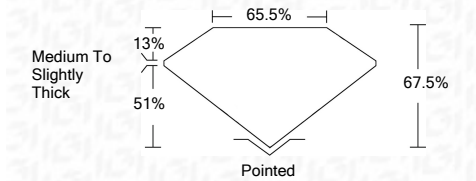
07/29/2021

IGI Report Number: LG487108318, Shape and Cutting Style: CUT CORNERED RECTANGULAR MODIFIED BRILLIANT

Measurements: 7.98 x 6.03 x 4.07 mm

GRADING RESULTS

Carat Weight: 1.74 CARAT, Color Grade: H, Clarity Grade: SI 1



ADDITIONAL GRADING INFORMATION

Polish: EXCELLENT, Symmetry: EXCELLENT, Fluorescence: NONE, Inscription(s): LABGROWN IGI LG487108318

Comments: This Laboratory Grown Diamond was created by Chemical Vapor Deposition (CVD) growth process and may include post-growth treatment. Type IIa



IGI Report No. LG487108318, CUT CORNERED RECT. MODIFIED BRILLIANT, 7.98 x 6.03 x 4.07 mm, 1.74 CARAT, H, SI 1, 67.5%, 65.5%, Medium To Slightly Thick, Pointed, EXCELLENT, EXCELLENT, NONE, LABGROWN IGI LG487108318

This Laboratory Grown Diamond was created by Chemical Vapor Deposition (CVD) growth process and may include post-growth treatment. Type IIa

