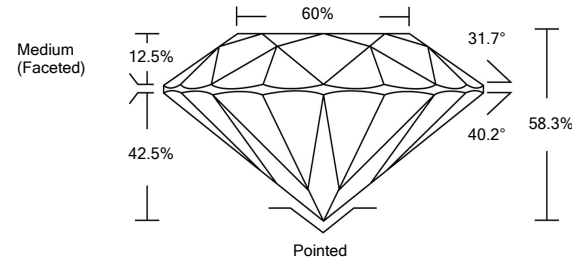




LABORATORY GROWN DIAMOND REPORT

LG485163264

PROPORTIONS



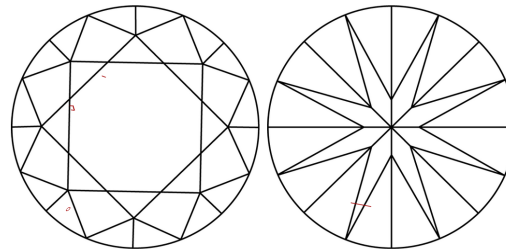
GRADING SCALES

Table with 5 columns for Color Grading Scale (CL to LT) and Clarity (10x) Grading Scale (FL to I).

The laboratory grown diamond described in this Report (Report) has been graded, tested, analyzed, examined and/or inscribed by International Gemological Institute (IGI). A laboratory grown diamond is one that has essentially the same chemical, physical and optical properties as a mined diamond...

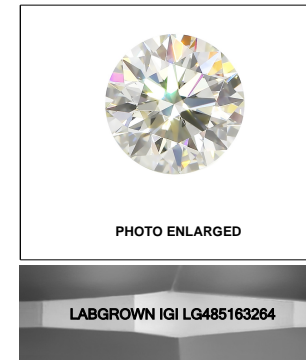
© INTERNATIONAL GEMOLOGICAL INSTITUTE, INC.

CLARITY CHARACTERISTICS



KEY TO SYMBOLS

Red symbols indicate internal characteristics. Green symbols indicate external characteristics.



LASERSCRIBE SM

07/22/2021

IGI Report Number LG485163264

Shape and Cutting Style ROUND BRILLIANT

Measurements 9.22 - 9.27 x 5.39 mm

GRADING RESULTS

Carat Weight 2.81 CARATS

Color Grade K

Clarity Grade VS 2

Cut Grade EXCELLENT

ADDITIONAL GRADING INFORMATION

Polish EXCELLENT

Symmetry EXCELLENT

Fluorescence NONE

Inscription(s) LABGROWN IGI LG485163264

Comments: This Laboratory Grown Diamond was created by Chemical Vapor Deposition (CVD) growth process and may include post-growth treatment. Type IIa

Summary table of report details: IGI Report No. LG485163264, ROUND BRILLIANT, 9.22 - 9.27 x 5.39 mm, 2.81 CARATS, VS 2, EXCELLENT, 58.3%, 60%, Medium (Faceted), Pointed, EXCELLENT, EXCELLENT, NONE, LABGROWN IGI LG485163264.

