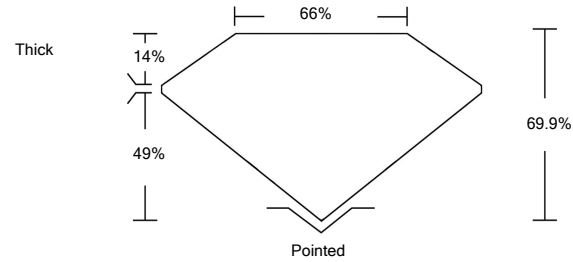




LABORATORY GROWN DIAMOND REPORT

LG485162729

PROPORTIONS

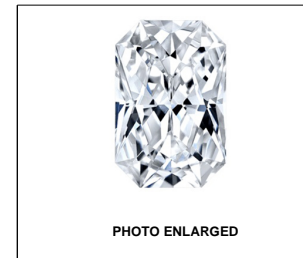


GRADING SCALES

Table with 5 columns for Color Grading Scale (CL to LT) and Clarity (10x) Grading Scale (FL to I).

The laboratory grown diamond described in this Report (Report) has been graded, tested, analyzed, examined and/or inscribed by International Gemological Institute (IGI). A laboratory grown diamond is one that has essentially the same chemical, physical and optical properties as a mined diamond...

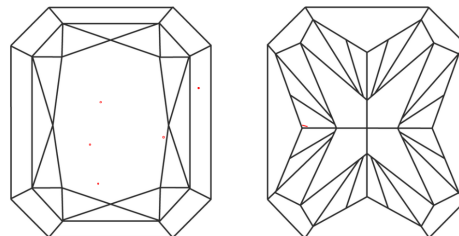
© INTERNATIONAL GEMOLOGICAL INSTITUTE, INC.



LABGROWN IGI LG485162729

LASERSCRIBE<sup>SM</sup>

CLARITY CHARACTERISTICS



KEY TO SYMBOLS

Red symbols indicate internal characteristics. Green symbols indicate external characteristics.

07/19/2021 IGI Report Number LG485162729 Shape and Cutting Style CUT CORNERED RECTANGULAR MODIFIED BRILLIANT Measurements 7.93 x 6.25 x 4.37 mm

GRADING RESULTS

Carat Weight 2.04 CARATS Color Grade H Clarity Grade VS 1

ADDITIONAL GRADING INFORMATION

Polish EXCELLENT Symmetry EXCELLENT Fluorescence NONE Inscription(s) LABGROWN IGI LG485162729

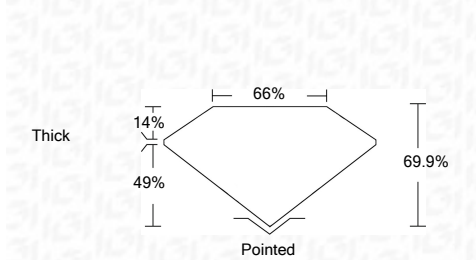
Comments: This Laboratory Grown Diamond was created by Chemical Vapor Deposition (CVD) growth process and may include post-growth treatment. Type IIa

07/19/2021 IGI Report Number LG485162729 Shape and Cutting Style CUT CORNERED RECTANGULAR MODIFIED BRILLIANT

Measurements 7.93 x 6.25 x 4.37 mm

GRADING RESULTS

Carat Weight 2.04 CARATS Color Grade H Clarity Grade VS 1



ADDITIONAL GRADING INFORMATION

Polish EXCELLENT Symmetry EXCELLENT Fluorescence NONE Inscription(s) LABGROWN IGI LG485162729

Comments: This Laboratory Grown Diamond was created by Chemical Vapor Deposition (CVD) growth process and may include post-growth treatment. Type IIa



IGI

07/19/2021 IGI Report No. LG485162729 CUT CORNERED RECT. MODIFIED BRILLIANT 7.93 x 6.25 x 4.37 mm 2.04 CARATS H VS 1 66.9% 66% Thick Pointed EXCELLENT EXCELLENT NONE LABGROWN IGI LG485162729

This Laboratory Grown Diamond was created by Chemical Vapor Deposition (CVD) growth process and may include post-growth treatment. Type IIa