



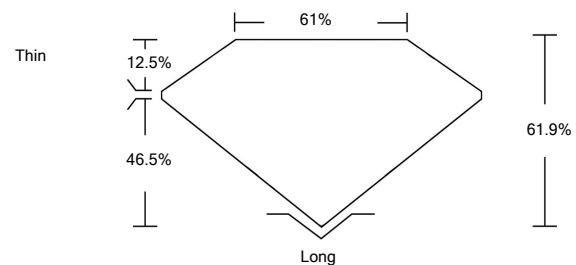
LABORATORY GROWN DIAMOND REPORT

August 12, 2021	
IGI Report Number	LG483199835
Description	LABORATORY GROWN DIAMOND
Shape and Cutting Style	EMERALD CUT
Measurements	7.54 X 5.20 X 3.22 MM
GRADING RESULTS	
Carat Weight	1.17 CARAT
Color Grade	E
Clarity Grade	VS 1
ADDITIONAL GRADING INFORMATION	
Polish	VERY GOOD
Symmetry	VERY GOOD
Fluorescence	NONE
Inscription(s)	LABGROWN IGI LG483199835

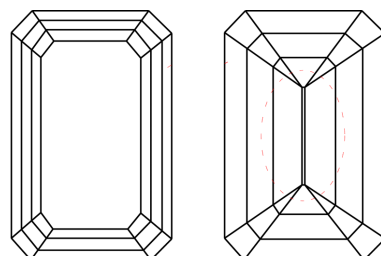
Comments: As Grown - No indication of post-growth treatment
This Laboratory Grown Diamond was created by Chemical Vapor Deposition (CVD) growth process
Type IIa

LG483199835

PROPORTIONS



CLARITY CHARACTERISTICS



KEY TO SYMBOLS

Red symbols indicate internal characteristics.
Green symbols indicate external characteristics.

GRADING SCALES

COLOR GRADING SCALE	CL	NC	FT	VL	LT	
	COLORLESS D-F	NEAR COLORLESS G-J	FAINT K-M	VERY LIGHT N-R	LIGHT S-Z	
CLARITY (10x) GRADING SCALE	FL	IF	VVS	VS	SI	I
	FLAWLESS INTERNALLY FLAWLESS	VERY VERY SLIGHTLY INCLUDED	VERY SLIGHTLY INCLUDED	SLIGHTLY INCLUDED	INCLUDED	

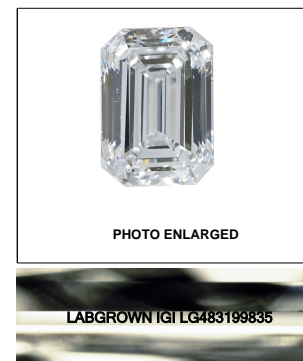
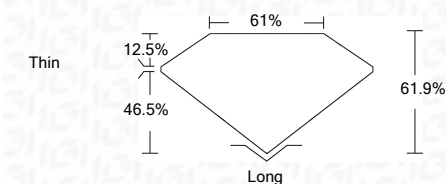


PHOTO ENLARGED
LASERSCRIBESM

August 12, 2021	
IGI Report Number	LG483199835
Description	LABORATORY GROWN DIAMOND
Shape and Cutting Style	EMERALD CUT
Measurements	7.54 X 5.20 X 3.22 MM
GRADING RESULTS	
Carat Weight	1.17 CARAT
Color Grade	E
Clarity Grade	VS 1



ADDITIONAL GRADING INFORMATION

Polish	VERY GOOD
Symmetry	VERY GOOD
Fluorescence	NONE
Inscription(s)	LABGROWN IGI LG483199835

Comments: As Grown - No indication of post-growth treatment
This Laboratory Grown Diamond was created by Chemical Vapor Deposition (CVD) growth process
Type IIa



IGI

August 12, 2021	
IGI Report No. LG483199835	
EMERALD CUT	
Carat Weight	1.17 CARAT
Color Grade	E
Clarity Grade	VS 1
Depth	61.9%
Table	61%
Grade	Thin
Culet	Long
Polish	VERY GOOD
Symmetry	VERY GOOD
Fluorescence	NONE
Inscription(s)	LABGROWN IGI LG483199835
Comments:	As Grown - No indication of post-growth treatment This Laboratory Grown Diamond was created by Chemical Vapor Deposition (CVD) growth process Type IIa