



ELECTRONIC COPY

LABORATORY GROWN
DIAMOND REPORT

LABORATORY GROWN DIAMOND REPORT

LABORATORY GROWN DIAMOND REPORT

07/08/2021	
IGI Report Number	LG483197027

Shape and Cutting Style **PRINCESS CUT**

Measurements	7.93 x 7.90 x 5.47 mm
--------------	-----------------------

GRADING RESULTS

Carat Weight **3.02 CARATS**

Color Grade	K
-------------	---

Clarity Grade	SI 2
---------------	------

ADDITIONAL GRADING INFORMATION

Polish **EXCELLENT**

Symmetry	EXCELLENT
----------	-----------

Fluorescence **NONE**

Inscription(s) LABGROWN IGI LG483197027

Comments: This Laboratory Grown Diamond was created by Chemical Vapor Deposition (CVD) growth process and may include post-growth treatment.
Type IIa

LG483197027

PROPORTIONS

Medium

10.5%

55.5%

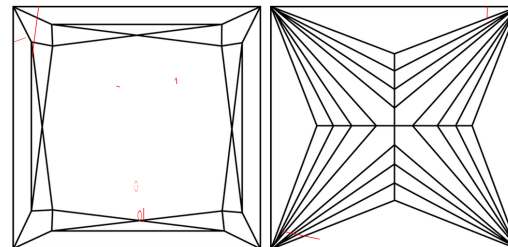
72.5%

69.2%

Pointed

The diagram shows a diamond-shaped garment with a pointed bottom. The proportions are as follows: the top width is 72.5%, the bottom width is 69.2%, the top height is 10.5%, and the bottom height is 55.5%. The word 'Medium' is on the left, and 'Pointed' is at the bottom.

CLARITY CHARACTERISTICS



KEY TO SYMBOLS

Red symbols indicate internal characteristics.
Green symbols indicate external characteristics.

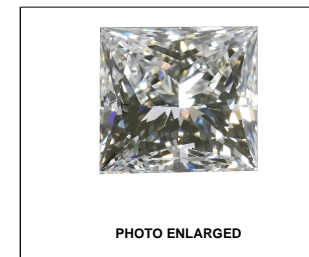
GRADING SCALES

COLOR GRADING SCALE	CL		NC		FT		VLT		LT	
	COLORLESS D-F		NEAR COLORLESS G-J		FAINT K-M		VERY LIGHT N-R		LIGHT S-Z	
CLARITY (10x) GRADING SCALE	FL	IF	VVS		VS		SI		I	
	FLAWLESS INTERNALLY FLAWLESS		VERY VERY SLIGHTLY INCLUDED		VERY SLIGHTLY INCLUDED		SLIGHTLY INCLUDED		INCLUDED	

The laboratory grown diamond described in this Report (Report) has been graded, tested, analyzed, examined and/or inscribed by International Gemological Institute (IGI). A laboratory grown diamond is one that has essentially the same chemical, physical and optical properties as a natural diamond. IGI is a laboratory owned and operated by a company (a manufactured product). IGI employs and utilizes those techniques and equipment currently available to IGI, including, without limitation, 10X magnification, corrected triplet loupe, binocular microscope, master color comparison stones, non-contact optical spectrometer, diamond detector, and/or other instruments and/or processes as deemed appropriate by IGI. This Report includes advanced security features. A duly accredited gemologist or jeweler can advise you with respect to the importance of and interrelationship between cut, color, clarity and carat weight.

THIS REPORT IS NEITHER A GUARANTEE, VALUATION, NOR APPRAISAL OF THE GEMSTONE DESCRIBED HEREIN. PLEASE REVIEW THE LIMITATIONS AND RESTRICTIONS SET FORTH ONLINE. FOR MORE INFORMATION, PLEASE VISIT WWW.IGI.ORG OR CALL 1-888-BUY-IGI.

© INTERNATIONAL GEMOLOGICAL INSTITUTE, INC.



LABGROWN IGI LG483197027

LASERSCRIBESM

© IGI 2020, International Gemological Institute

FD - 10 20



THIS DOCUMENT WAS PRODUCED WITH THE FOLLOWING SECURITY MEASURES: SPECIAL DOCUMENT PAPER, INK SCREENS, WATERMARK, BACKGROUND DESIGNS, HOLOGRAM, AND OTHER SECURITY FEATURES NOT LISTED AND DO EXCEED DOCUMENT SECURITY INDUSTRY GUIDELINES.

07/08/2021	
IGI Report Number	LG483197027
Shape and Cutting Style	PRINCESS CUT
Measurements	7.93 x 7.90 x 5.47 mm
GRADING RESULTS	
Carat Weight	3.02 CARATS
Color Grade	K
Clarity Grade	SI 2

ADDITIONAL GRADING INFORMATION

Polish	EXCELLENT
Symmetry	EXCELLENT
Fluorescence	NONE
Inscription(s)	LABGROWN IGI LG483197027

Comments: This Laboratory Grown Diamond was created by Chemical Vapor Deposition (CVD) growth process and may include post-growth treatment.
Type IIa



IGI

07/08/2021	IGI Report No. LG483197027
PRINCESS CUT	
3.02 CARATS	5.93 x 5.93 x 7.90 mm Carat Weight
K	Color Grade
S12	Clarity Grade
69.2%	Depth
72.5%	Table
Medium	Girdle
Polished	Culet
EXCELLENT	Polish
EXCELLENT	Symmetry
NONE	Fluorescence
LARGROWN IGI LG483197027	Inscriptions)
Comments:	
This Laboratory Grown Diamond was created by Chemical Vapor Deposition and may include post-growth treatment.	
Type IIA	

This Laboratory Grown Diamond was created by Chemical Vapor Deposition (CVD) growth process and may include post-growth treatment.